

# Facilitating disaster recovery by empowering non-expert GIS users in government

Kelly Richardson

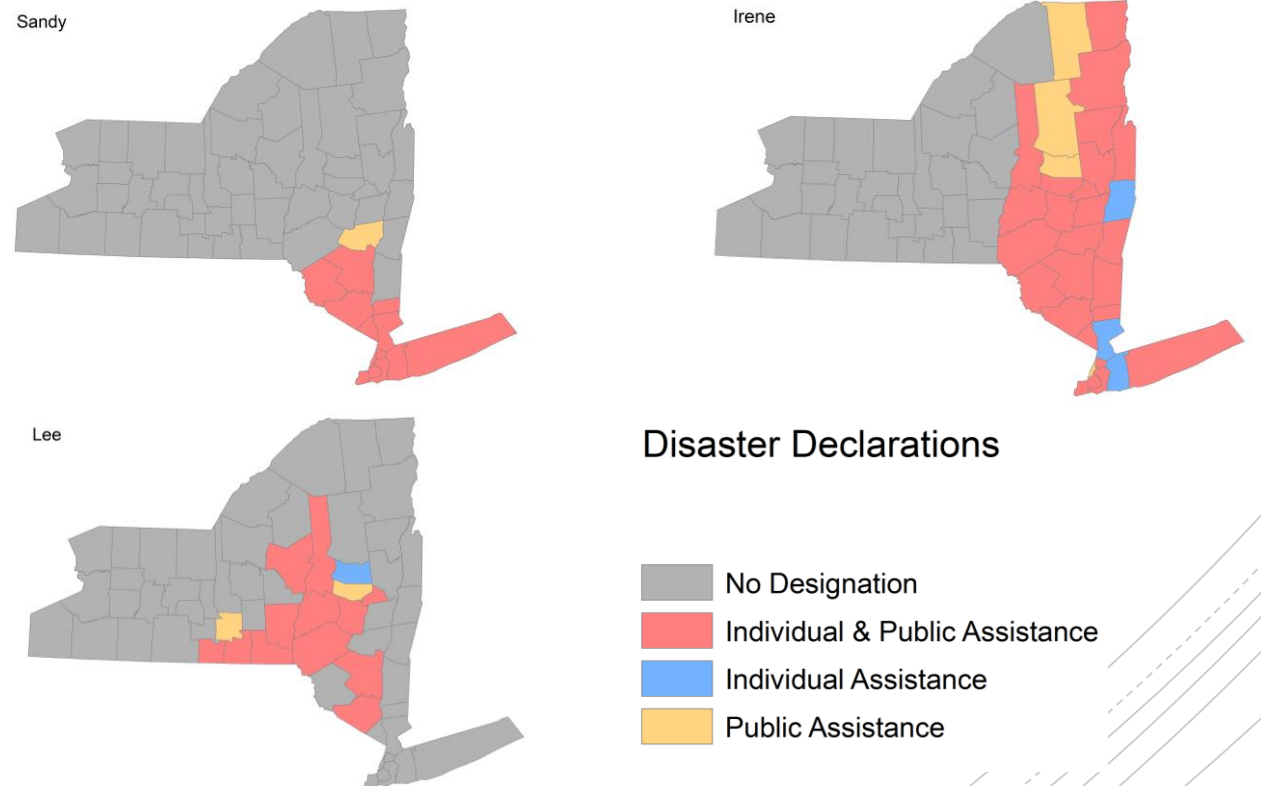
NYS Governor's Office of Storm Recovery



Governor's Office of  
Storm Recovery

# Governor's Office of Storm Recovery

- Created in 2013 to coordinate recovery efforts after 3 major storms, Hurricane Irene, Tropical Storm Lee, and Superstorm Sandy
- 38 counties included in the presidential disaster declaration

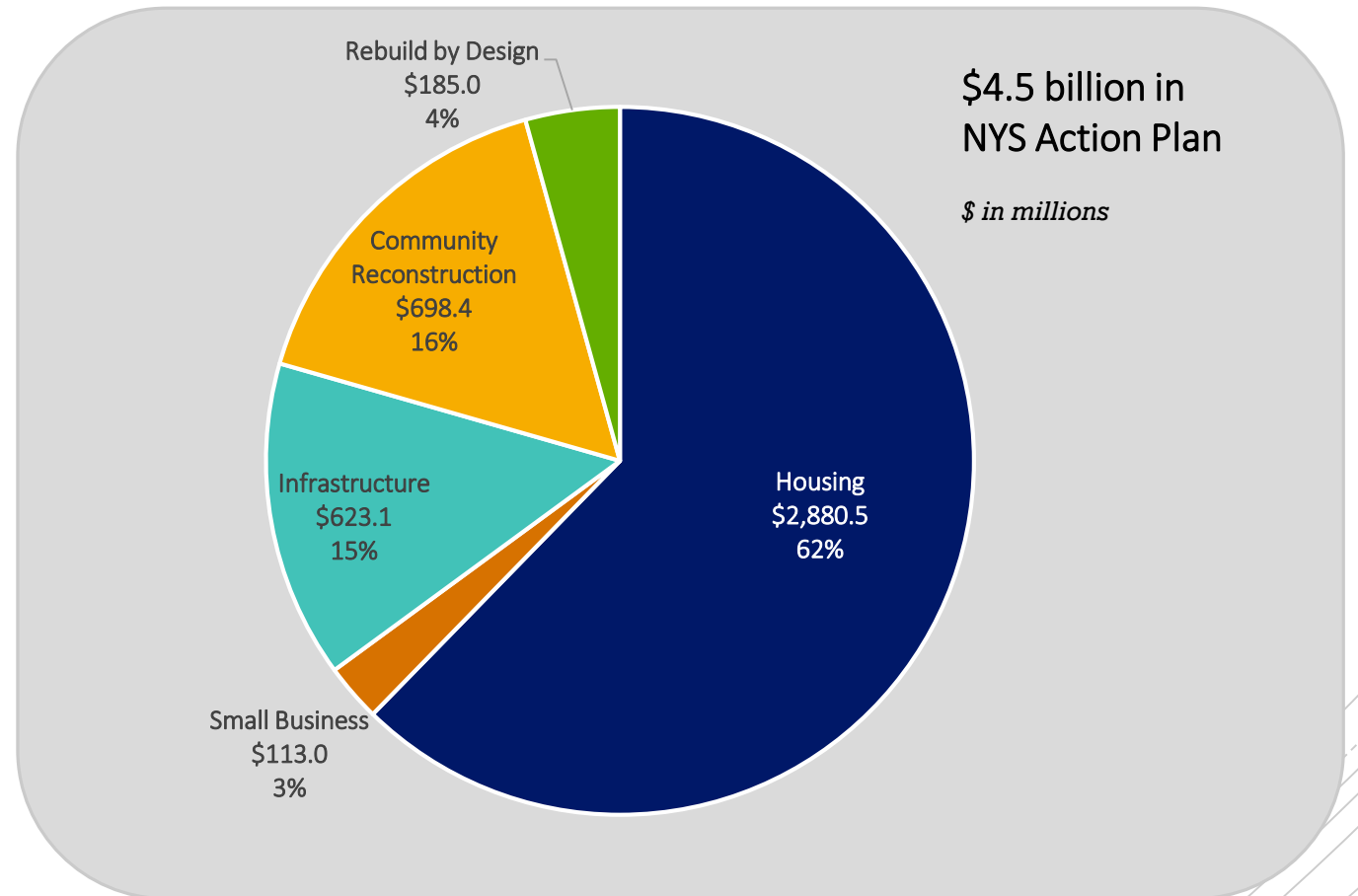


## CDBG-DR

- Sub-program of CDBG to assist with disaster recovery, started in 1993
- One-time unique funding source to address unmet recovery needs
- Must be spent in presidentially declared areas; i.e. tied to the disaster

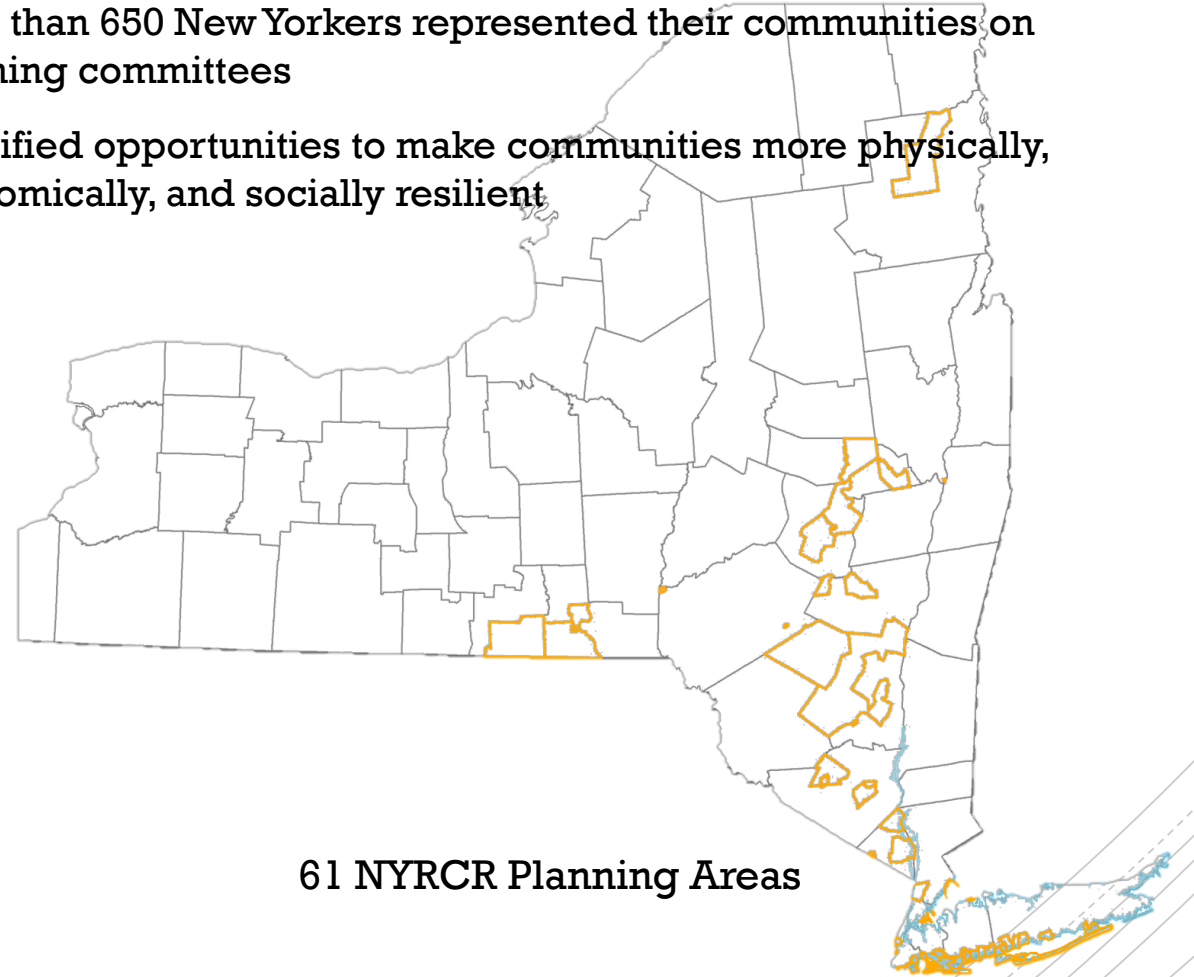
# GOSR Programs

- Oversees the NYS allocation of CDBG-DR funds (\$4.5 billion)
- New York City has its own allocation



# NY Rising Community Reconstruction

- Participatory effort that empowers communities to identify local recovery needs
- Provides assistance to 124 severely damaged communities across NYS
- More than 650 New Yorkers represented their communities on planning committees
- Identified opportunities to make communities more physically, economically, and socially resilient



61 NYRCR Planning Areas

# Program Implementation

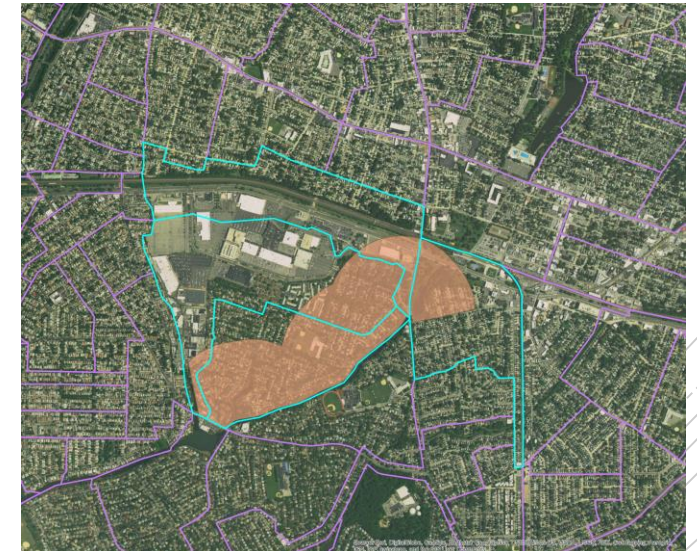
## REGULATORY CONSTRAINTS

- CDBG-DR regulations require documenting beneficiaries of projects
  - Beneficiary information
- Service Areas

Service Area



Service Area and Block Groups



A dark blue speech bubble graphic with a white outline, containing the text 'Program Implementation'. The bubble has a tail pointing downwards and to the left.

## Program Implementation

## PROGRAM CONSISTENCY

- 3 regions (Upstate, Long Island, NYC)
- 300+ potential projects
- Rapid increase in project portfolio with little to no comprehensive geographic data collection

# Visualizing the Community Reconstruction Program

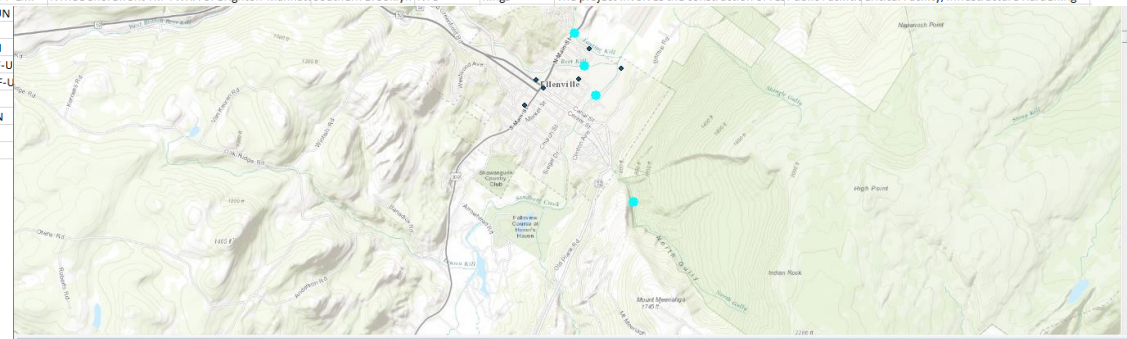
- Wide range of project types – facility generators to workforce training programs
- Data collection by project application
  - Address locations
  - Approximated location of culverts
- Multiple location projects
- Project information changes weekly



# CR Project Dataset

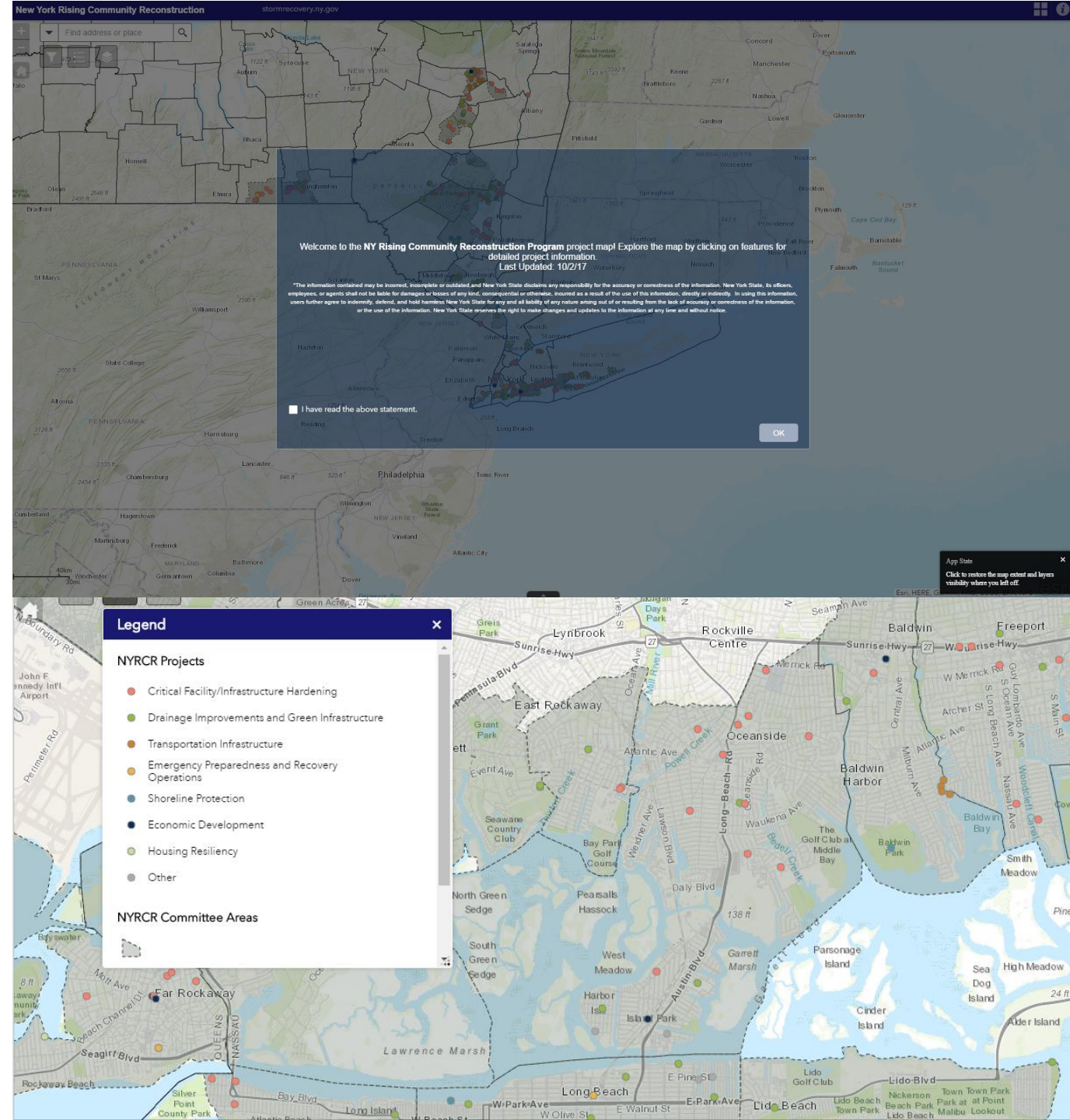
OBJECTID *	AppID	LocationDescription	Latitude	Longitude	Shape *
1	NYCR-0001	Wilhelm Road	42.143199	-73.961853	Point
2	NYCR-0001	Platte Clove Road	42.116929	-74.05664	Point
3	NYCR-0002	Staten Island NYRCR Area	40.547758	-74.161495	Point
4	NYCR-0003	Staten Island NYRCR Area	40.547758	-74.161495	Point
5	NYCR-0004	Bear Kill West	41.746637	-74.436996	Point
6	NYCR-0004	Bear Kill East	41.719779	-74.388418	Point
7	NYCR-0004	Sandberg Creek	41.716412	-74.38673	Point
8	NYCR-0004	Rondout Creek	41.746535	-74.364314	Point
9	NYCR-0004	North Gully	41.70395	-74.38088	Point
10	NYCR-0004	Fantine Kill	41.7236	-74.3899	Point
11	NYCR-0005	James Street	41.843108	-74.077456	Point
12	NYCR-0006	Bull Run Channel	42.150968	-74.651716	Point
13	NYCR-0007	Village of Woodford	42.791591	-73.679029	Point

399	NYCR-0213	R4-CR-DASNYHowBcathChitiesPrgrsS...Dvlpmt-PF-UN	NYRCC Catholic Charities Brooklyn and Queens ReHoward Beach	NYC	Queens	The project involves the construction of res Public Facilitie Critical Facility/Infrastructure Hardening
400	NYCR-0214	R4-CR-DASNYLMCatholicArchDioNY...PF-LMI	NYRCC Catholic Charities of the Archdiocese of NY Lower Manhattan	NYC	New York	The project involves the construction of res Public Facilitie Critical Facility/Infrastructure Hardening
401	NYCR-0216	R4-CR-DASNYRockeCongregationKnesethisrl-PF-LMI	NYRCC Congregation Kneseth Israel Resiliency Im Rockaway East	NYC	Queens	The project involves the construction of res Public Facilitie Critical Facility/Infrastructure Hardening
402	NYCR-0217	R4-CR-DASNYRedHookGoodShepServices1-PF-LMI	NYRCC Good Shepherd Services Resiliency Improv Red Hook	NYC	Kings	The project involves the construction of res Public Facilitie Critical Facility/Infrastructure Hardening
403	NYCR-0218	R4-CR-DASNYLMGrndStStlmtntNYRCC-PF-LMI	NYRCC Grand Street Settlement Resiliency Improv Lower Manhattan	NYC	New York	The project involves the construction of res Public Facilitie Critical Facility/Infrastructure Hardening
404	NYCR-0219	R4-CR-DASNYLMHenryStStlmtnt1-PF-LMI	NYRCC Henry Street Settlement Resiliency Improv Lower Manhattan	NYC	New York	The project involves the construction of res Public Facilitie Critical Facility/Infrastructure Hardening
405	NYCR-0219	R4-CR-DASNYLMHenryStStlmtnt2-PF-LMI	NYRCC Henry Street Settlement Resiliency Improv Lower Manhattan	NYC	New York	The project involves the construction of res Public Facilitie Critical Facility/Infrastructure Hardening
406	NYCR-0220	R4-CR-DASNYSouthBrklynPJCCGCI-PF-LMI	NYRCC Jewish Community Council of Greater Con Southern Brooklyn	NYC	Kings	The project involves the construction of res Public Facilitie Critical Facility/Infrastructure Hardening
407	NYCR-0221	R4-CR-DASNYStatenIslandNYRCCPubServJCCSI-PF-UN	NYRCC Jewish Community Council of Staten Islan Staten Island	NYC	Richmond	The project involves the construction of res Public Facilitie Critical Facility/Infrastructure Hardening
408	NYCR-0222	R4-CR-DASNYSheepsBayKingsBayMYWHA-PF-LMI	NYRCC Kings Bay YM-YWHA Resiliency Improvem Geritson Beach an	NYC	Kings	The project involves the construction of res Public Facilitie Critical Facility/Infrastructure Hardening
409	NYCR-0223	R4-CR-DASNYRedHookGoodShepServices2-PF-LMI	NYRCC Miccio Center Resiliency Improvemts Red Hook	NYC	Kings	The project involves the construction of res Public Facilitie Critical Facility/Infrastructure Hardening
410	NYCR-0224	R4-CR-DASNYHowBNYFamiliesAutisticChil-PF-UN	NYRCC NY Families for Autistic Children, Inc. Resil Howard Beach	NYC	Queens	The project involves the construction of res Public Facilitie Critical Facility/Infrastructure Hardening
411	NYCR-0225	R4-CR-DASNYRockawayPQueensBPL2-PF-LMI	NYRCC Queens Borough Public Library—Far RockaRockaway East	NYC	Queens	The project involves the construction of res Public Facilitie Critical Facility/Infrastructure Hardening
412	NYCR-0226	R4-CR-DASNYRockawayPQueensBPL1-PF-LMI	NYRCC Queens Borough Public Library—PeninsulRockaway East	NYC	Queens	The project involves the construction of res Public Facilitie Critical Facility/Infrastructure Hardening
413	NYCR-0227	R4-CR-DASNYRockeRckvWtrfrontAlliance-PF-LMI	NYRCC Rockaway Waterfront Alliance Resiliency 1 Rockaway East	NYC	Queens	The project involves the construction of res Public Facilitie Critical Facility/Infrastructure Hardening
414	NYCR-0228	R4-CR-DASNYSouthBKShoreMYWHA BriMhntnBeach-PF-LMI	NYRCC Shorefront YM-YWHA of Brighton-Manhattan Southern Brooklyn	NYC	Kings	The project involves the construction of res Public Facilitie Critical Facility/Infrastructure Hardening
415	NYCR-0229	R4-CR-DASNYSouthEBWSaintBernardRomCathPar-PF-UN				
416	NYCR-0231	R4-CR-DASNYLMUnivStlmtntoNY-PF-LMI				
417	NYCR-0232	R4-CR-DASNYRockeYoungIsraelWvcrestBaysvtr-PF-LMI				
418	NYCR-0233	R4-CR-DASNYNYRCCQueensBoroLibHowBeaResImp-PF-U				
419	NYCR-0234	R4-CR-DASNY-NYRCCQueensBoroLibSeasideResImp-PF-U				
420	NYCR-0235	R4-CR-DASNYStFrandsSalesResImprov-PF-UN				
421	NYCR-0236	R4-CR-DASNY-NYRCCStarsCommunityCtrResImp-PF-UN				
422	NYCR-0237	R4-CR-NTowerFirehouseResiliencyImprov-PF-UN				
423	NYCR-0238	R4-CR-East12thRoadBoardwalkRepair-PI-UN				

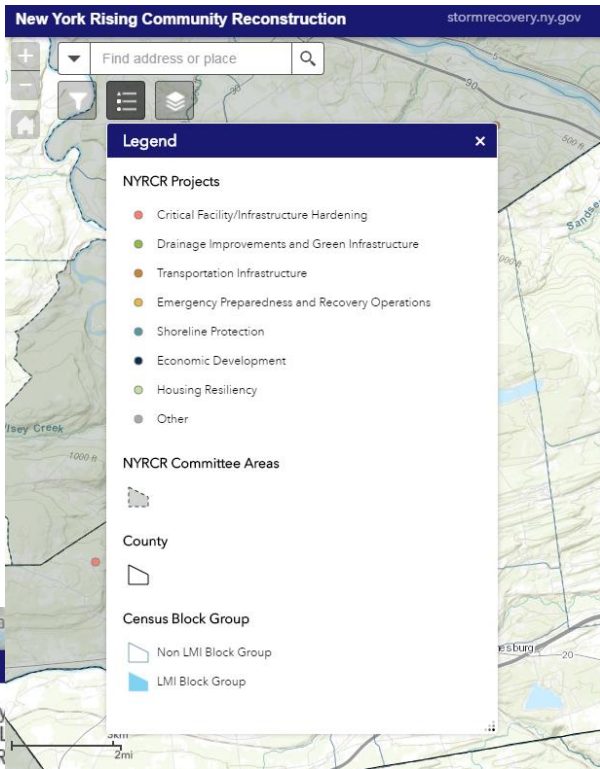


ProjectType	ReclassifiedType	MultipleLocation	Budget	Disbursed	DisbursedPct	RemainingPct	CurrentStatus	StatusReclass
Streets & Drainage	Transportation Infrastructure	Yes	1007520	416729.6	0.413619	0.586381	Construction	Construction
Streets & Drainage	Transportation Infrastructure	Yes	1007520	416729.6	0.413619	0.586381	Construction	Construction
TBD	Emergency Preparedness and Recovery Operations	No	65000	12295	0.189154	0.810846	Design	Design
Planning/Studies	Emergency Preparedness and Recovery Operations	No	330000	24314.65	0.073284	0.926716	Design	Design
Public Facilities & Improvements	Shoreline Protection	Yes	3674000	123624.33	0.033648	0.966352	Design	Design
Public Facilities & Improvements	Shoreline Protection	Yes	3674000	123624.33	0.033648	0.966352	Design	Design
Public Facilities & Improvements	Shoreline Protection	Yes	3674000	123624.33	0.033648	0.966352	Design	Design
Public Facilities & Improvements	Shoreline Protection	Yes	3674000	123624.33	0.033648	0.966352	Design	Design
Public Facilities & Improvements	Shoreline Protection	Yes	3674000	123624.33	0.033648	0.966352	Design	Design
Public Facilities & Improvements	Shoreline Protection	Yes	3674000	123624.33	0.033648	0.966352	Design	Design
Streets & Drainage	Drainage Improvements and Green Infrastructure	No	600000	56172	0.09362	0.90638	Design	Design
Planning/Studies	Shoreline Protection	No	1820000	132000	0.072527	0.927473	Design	Design
Water & Sewerage	Drainage Improvements and Green Infrastructure	No	330000	55650.58	0.168638	0.831362	Design	Design

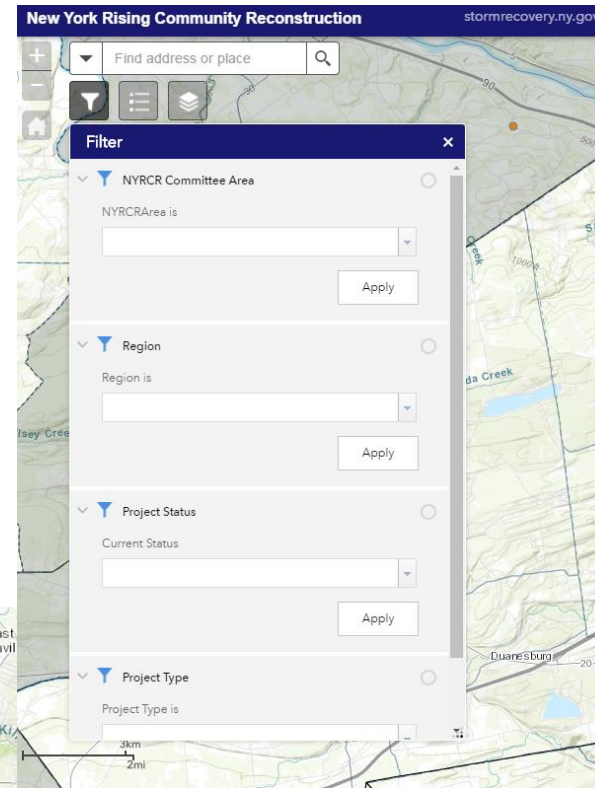
# Community Reconstruction Web Application



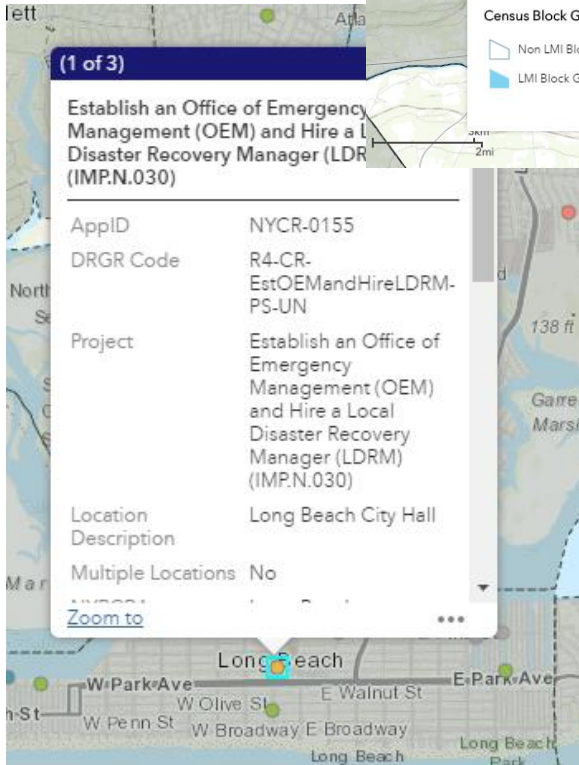
## Projects by Type



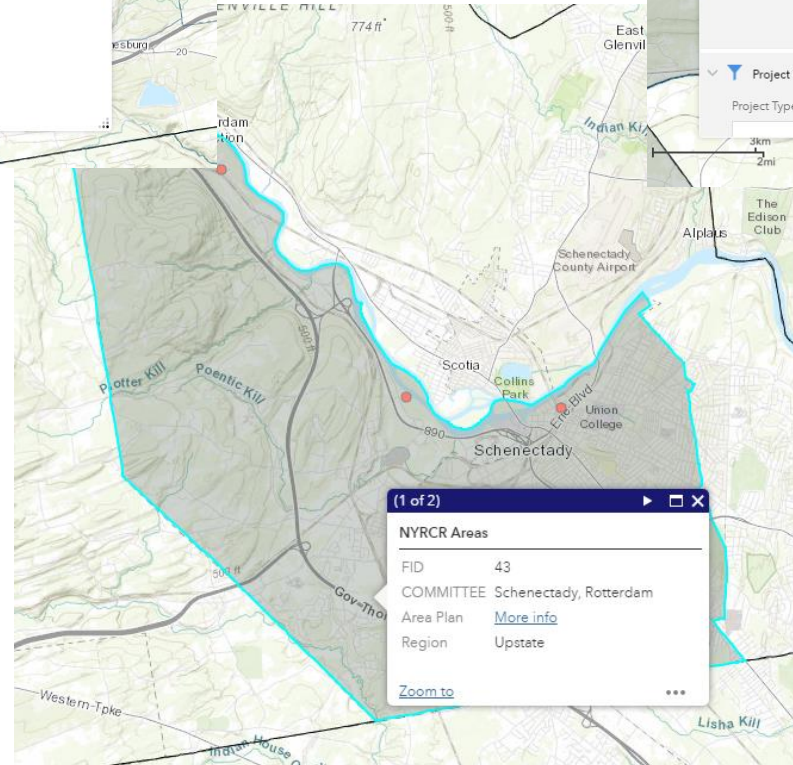
## Project Filters



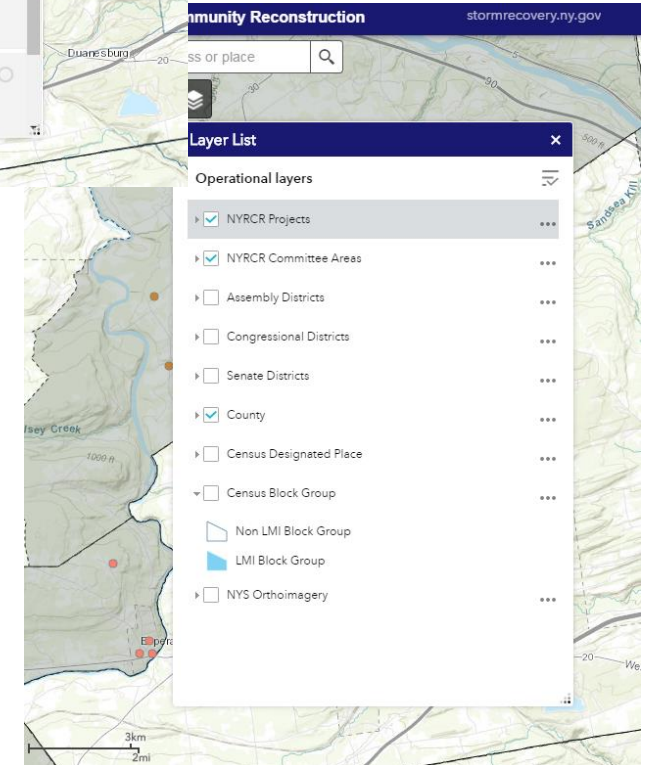
## Project Pop-up



## NYRCR Areas



## Optional Layers



# Visualizing the Community Reconstruction Program

## **INTERNAL**

- Fields and features relevant to program management
- Links to project documents

## **EXTERNAL (future state)**

- Public outreach
- Links to external project websites, where applicable
- Track project progress



Governor's Office of  
Storm Recovery

# Thank you!

Kelly Richardson

NYS Governor's Office of Storm Recovery

[Kelly.Richardson@stormrecovery.ny.gov](mailto:Kelly.Richardson@stormrecovery.ny.gov)