



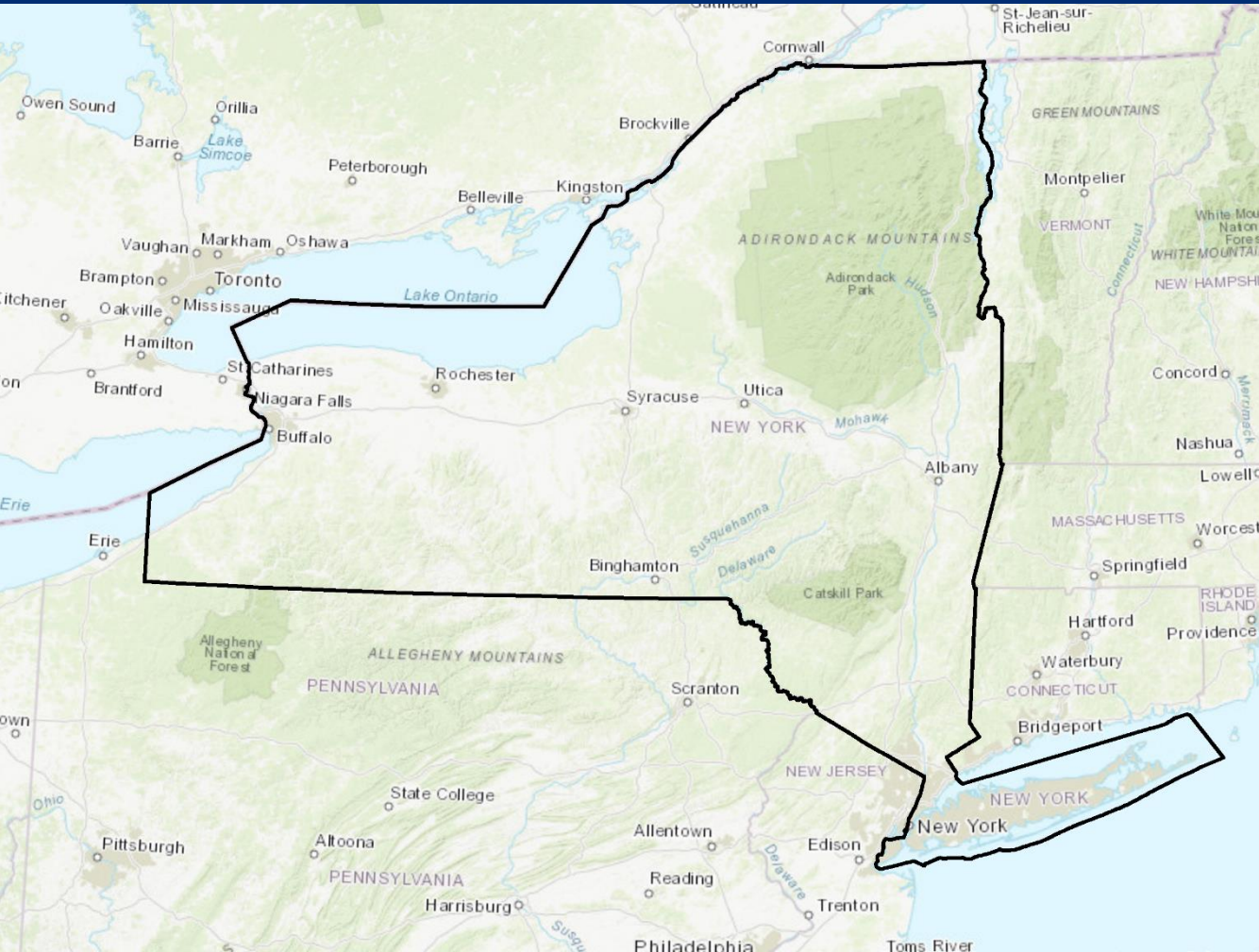
**Office of Information  
Technology Services**

# **Holding the Line Yet Pushing the Boundaries**

**October 22, 2017**

**NYS GIS Program Office  
Robert Gehrer, Program Manager  
Karen Henry, Technical Lead**

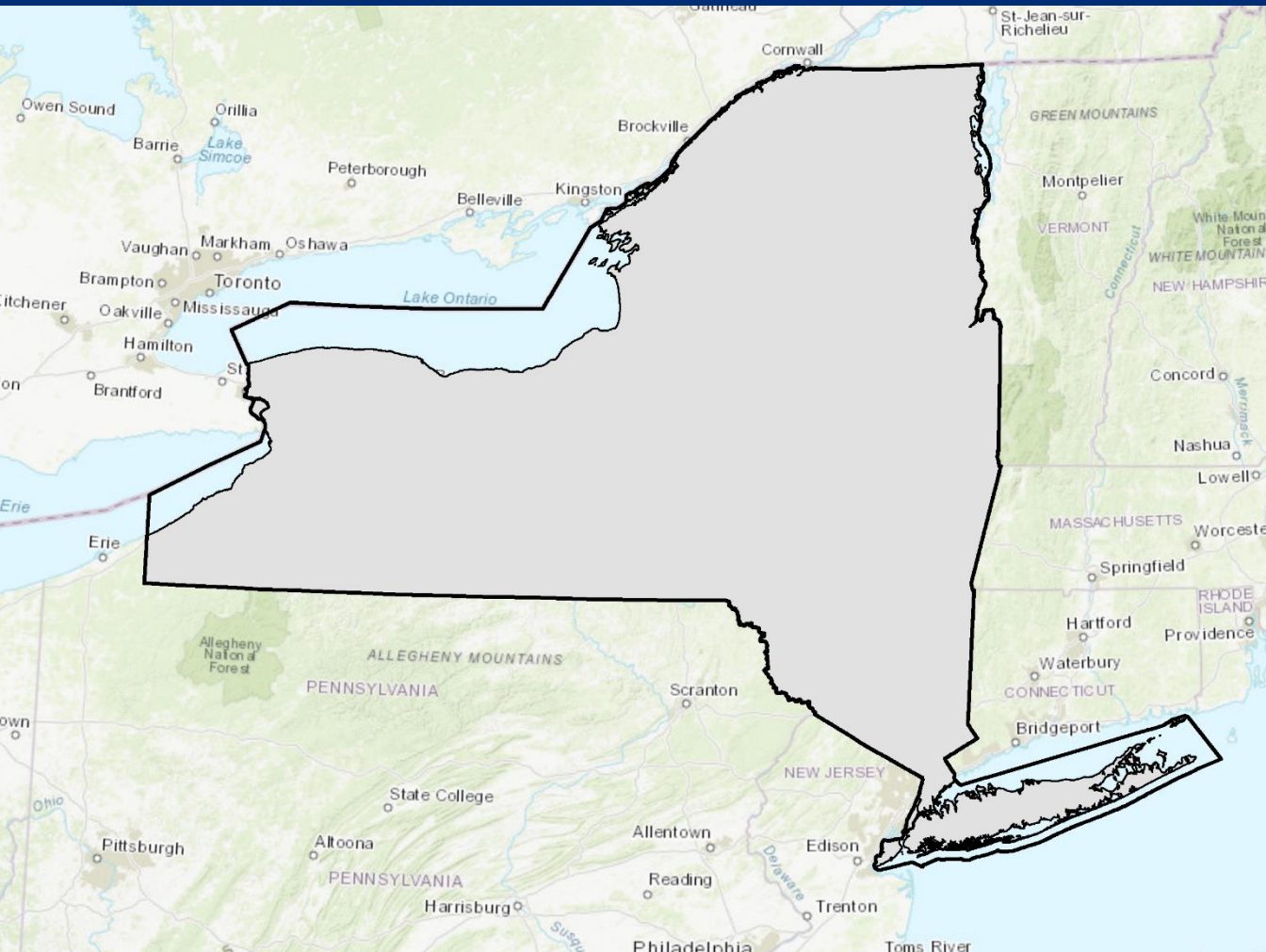
# Where We Are Today



# Civil Boundaries

## Feature Classes

### New York State

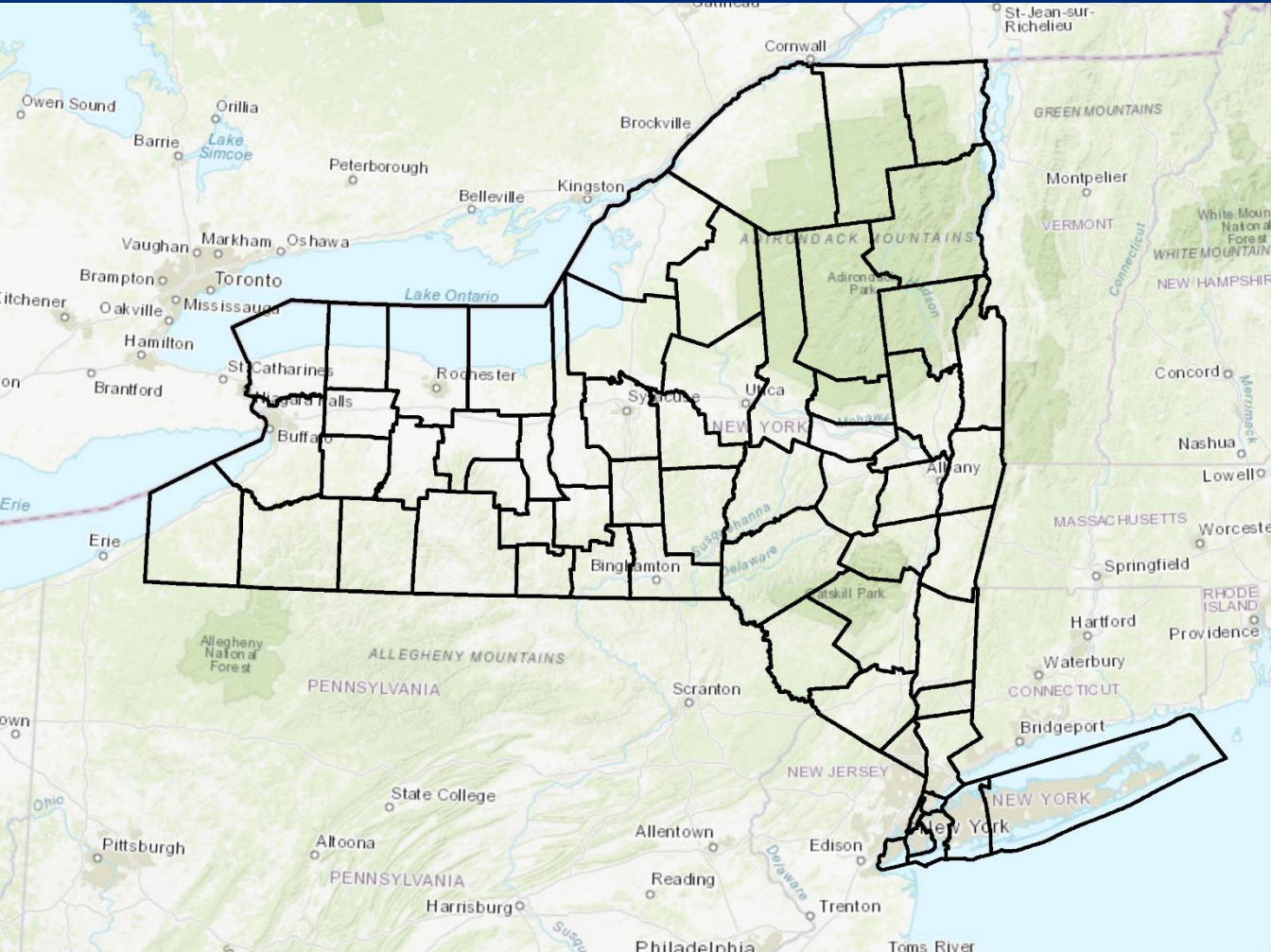


# Civil Boundaries

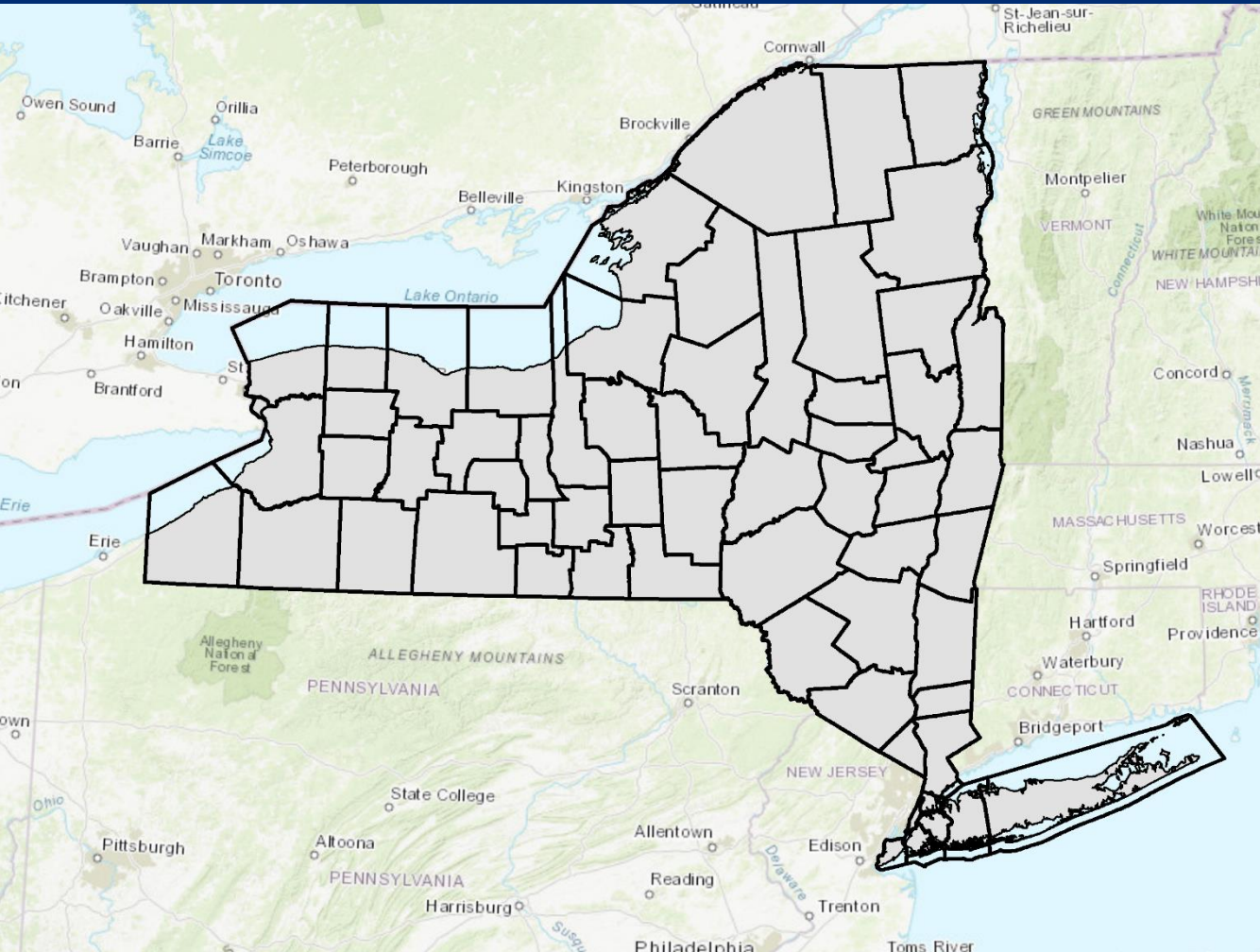
## Feature Classes

### New York State

### State Shoreline



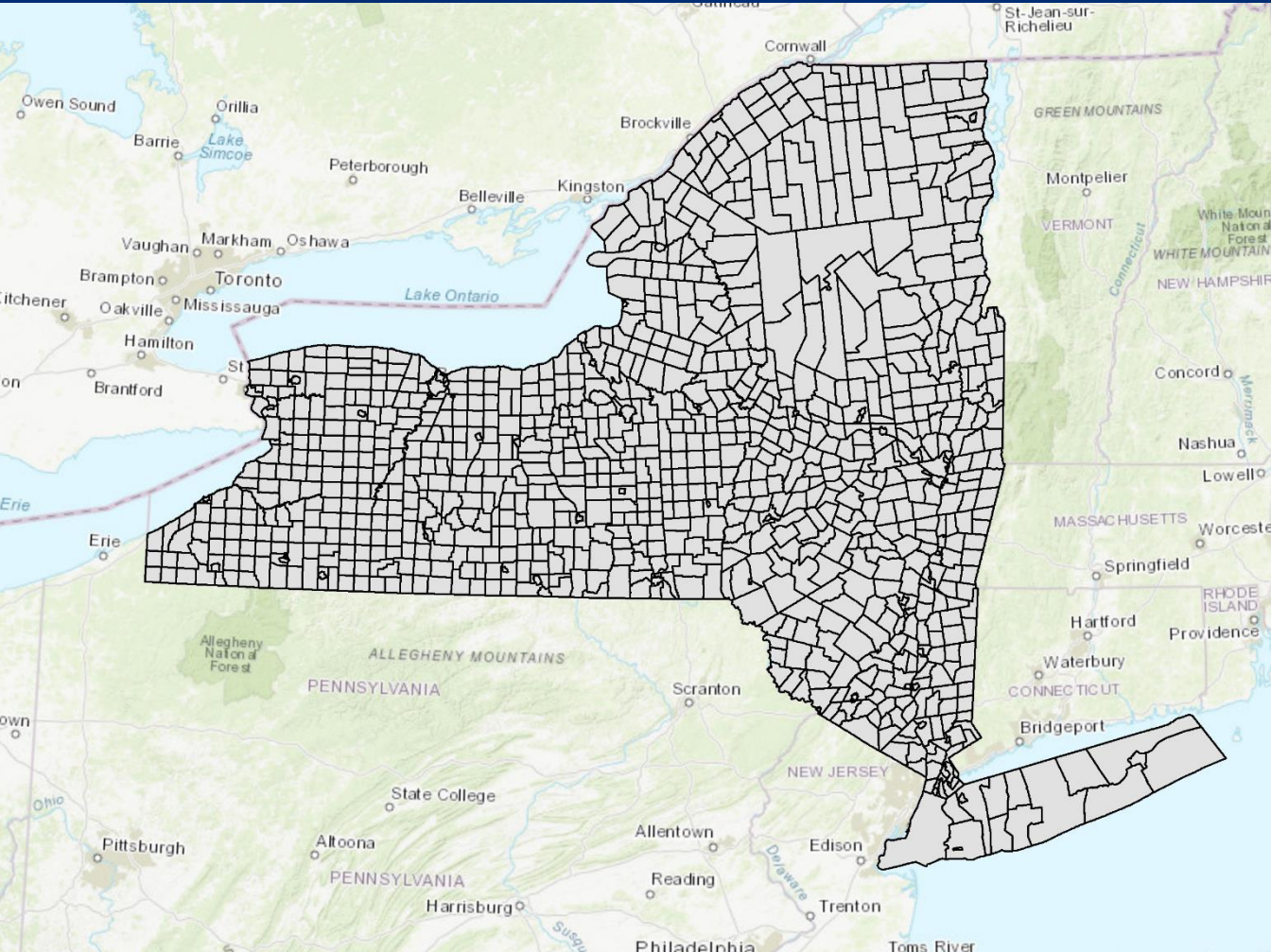
# Civil Boundaries Feature Classes Counties



# Civil Boundaries Feature Classes

Counties

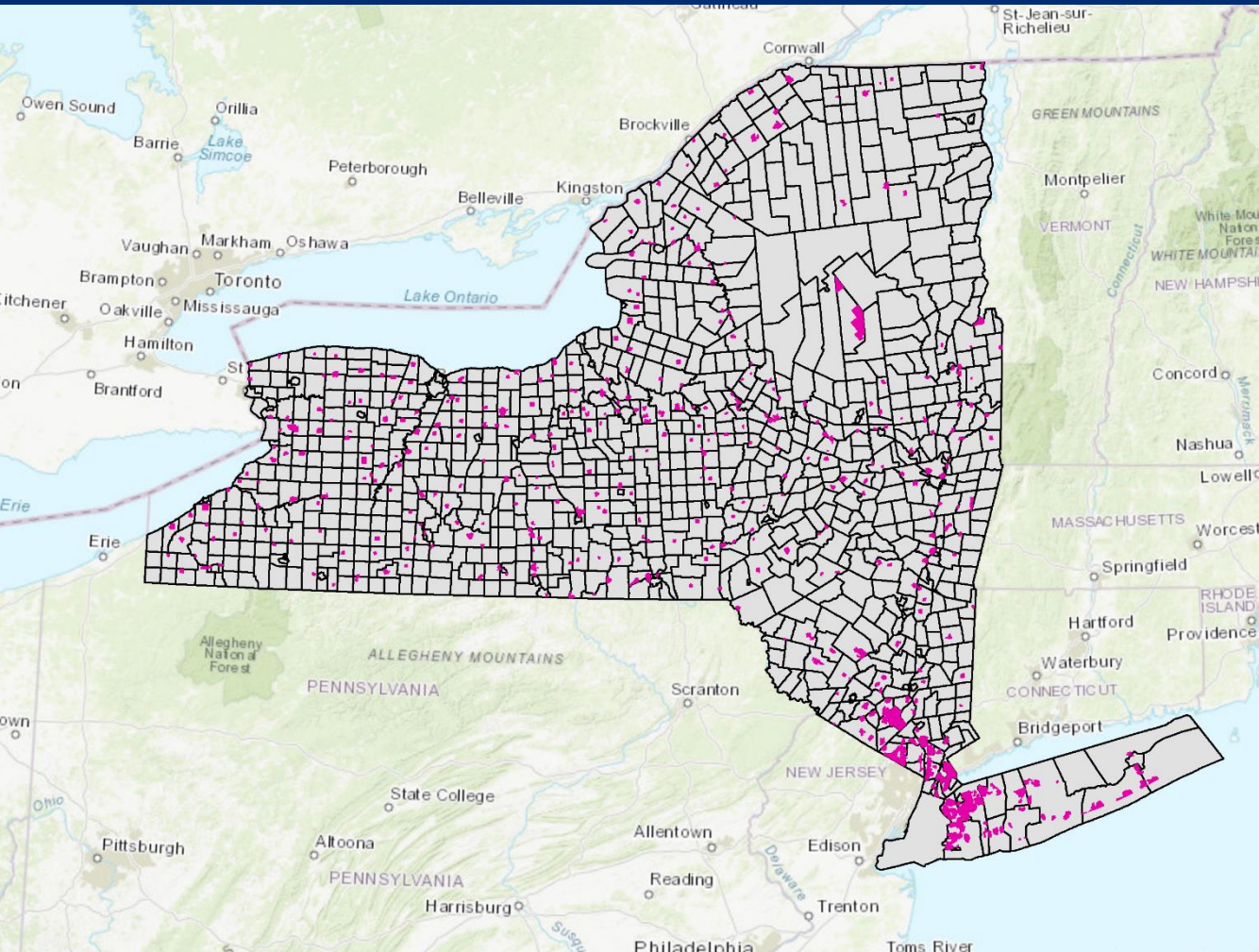
Counties Shoreline



# Civil Boundaries

## Feature Classes

### Cities & Towns



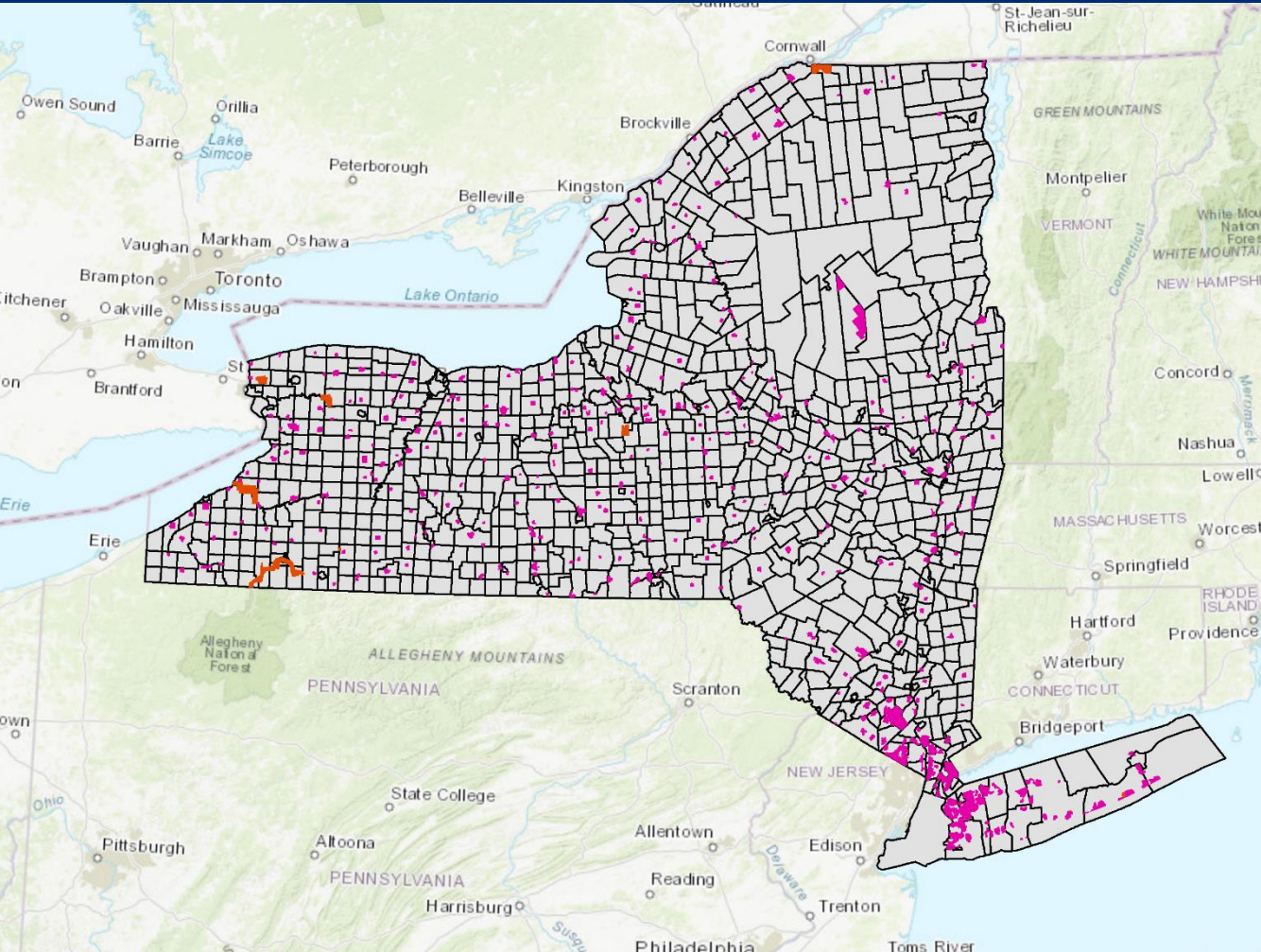
# Civil Boundaries Feature Classes

## Cities & Towns

## Villages

- 8 Villages in more than one County
- 75 Villages in more than one Town
- 6 Villages in three Towns
- 5 Coterminous Towns and Villages





# Civil Boundaries

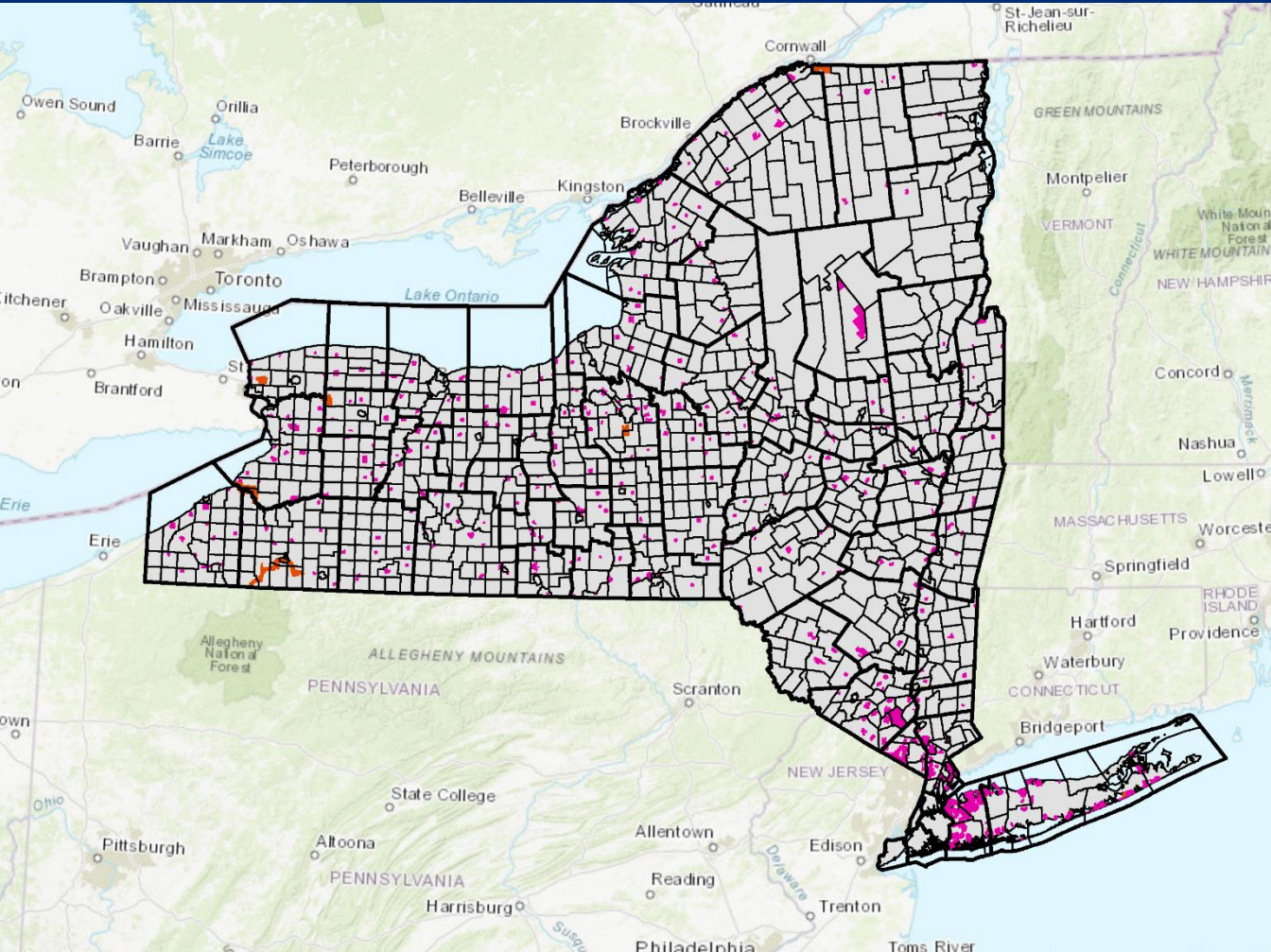
## Feature Classes

Cities & Towns

Villages

Indian Territories

10 Territories in NY



# Civil Boundaries

## 7 Feature Classes

- State
- State Shoreline
- Counties
- Counties Shoreline
- Cities & Towns
- Villages
- Indian Territories

# Where We Are Today

## Legal Changes

- Annexations
- Dissolutions
- Incorporations

## Spatial Improvement

- Street Centerlines (SAM)
- Address Points (SAM)
- Orthoimagery
- Parcels
- Hydrography

# Where We Are Today

## 911/Computer Aided Dispatch

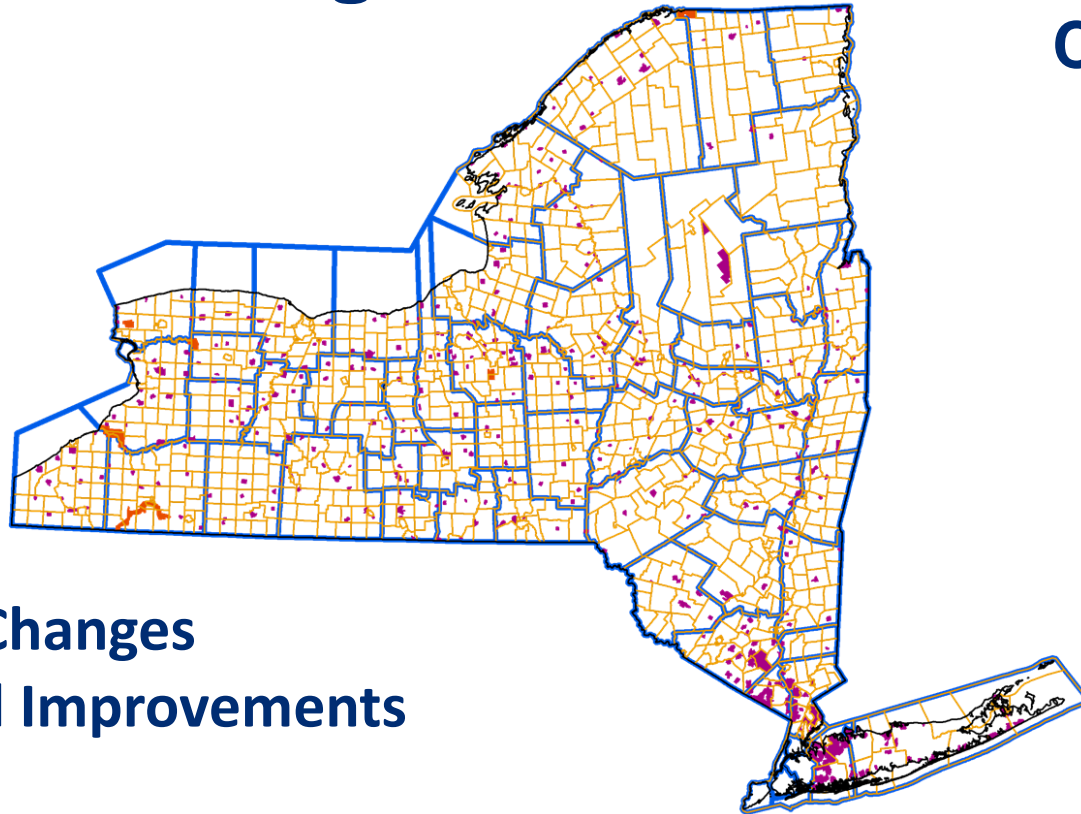
- Current operations: State and County levels
- Next Generation 911
  - a) Advisory Role
  - b) NG9-1-1 GIS Technical Subcommittee

## 2020 Census

- Assisting NYS Datacenter (DOL) with Boundary and Annexation Survey (BAS)

# The Work Being Done

# The Work Being Done



## Civil Boundaries

Feature Classes

State

State Shoreline

Counties

Counties Shoreline

Cities & Towns

Villages

Indian Territories

1. Legal Changes
2. Spatial Improvements

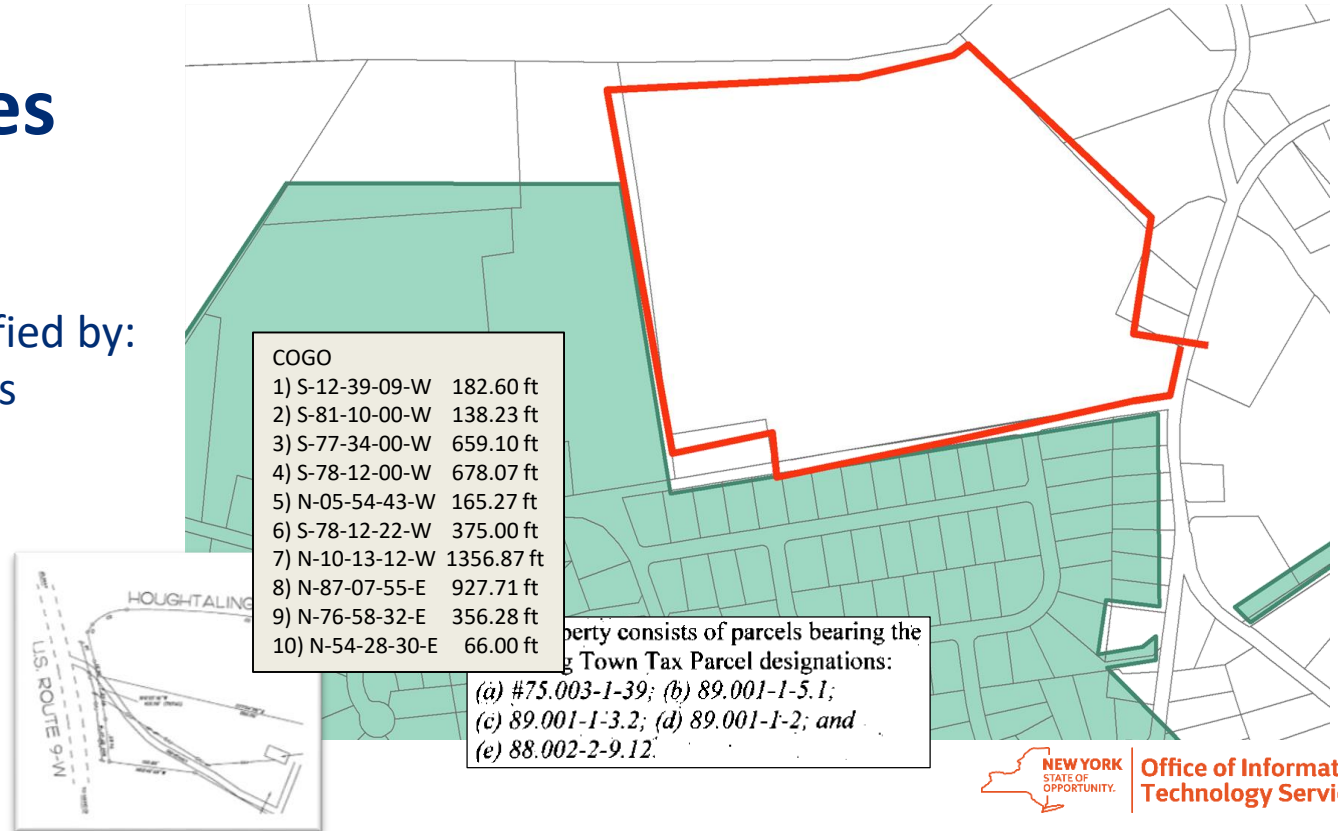
# The Work Being Done

## Legal Changes

Department of State  
Local Law Files

Properties are identified by:

- Metes and Bounds
- Parcel Address
- Parcel #
- Map



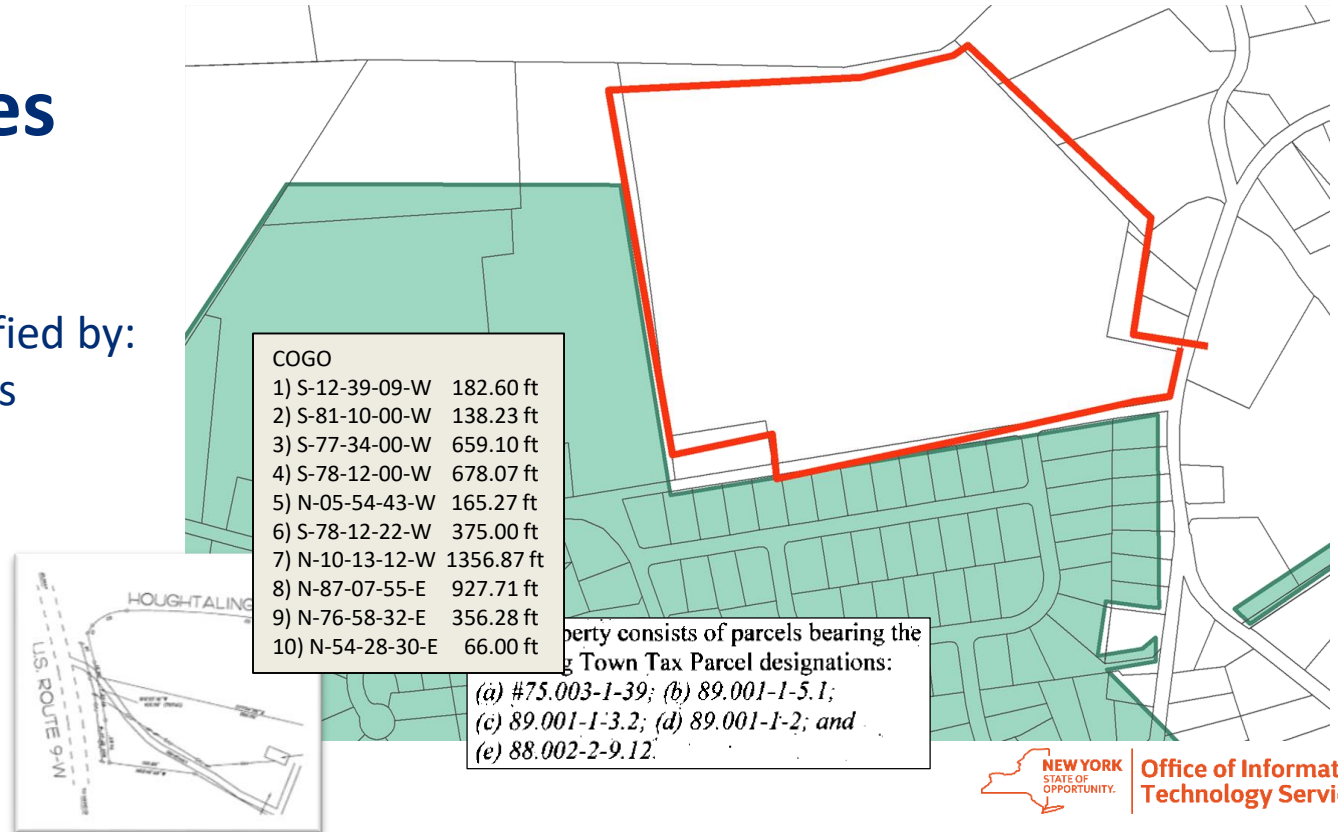
# The Work Being Done

## Legal Changes

Department of State  
Local Law Files

Properties are identified by:

- Metes and Bounds
- Parcel Address
- Parcel #
- Map

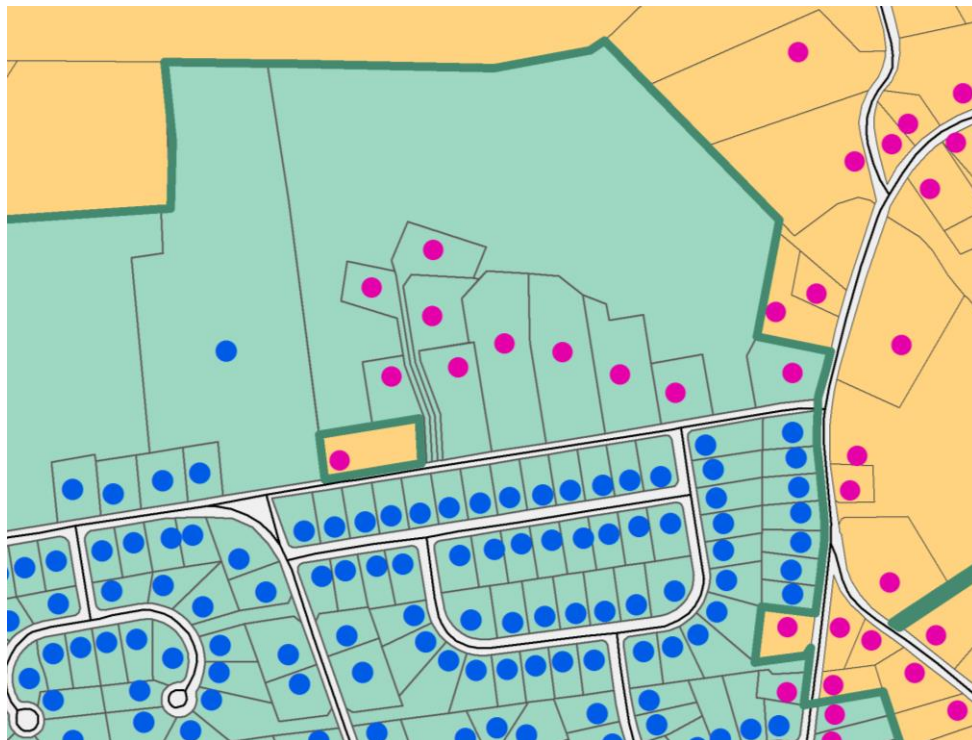




# The Work Being Done

## Spatial Improvements

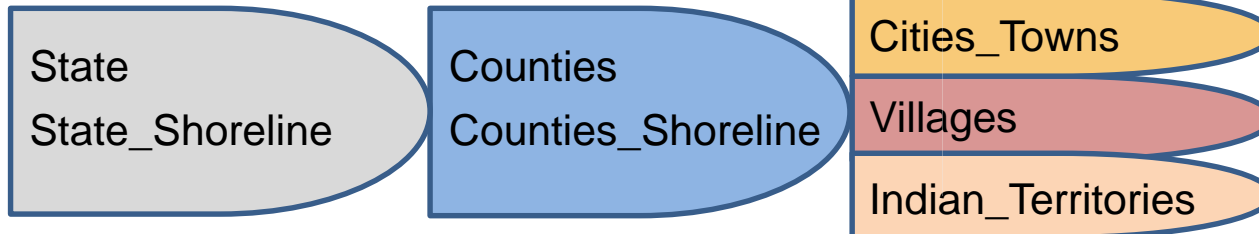
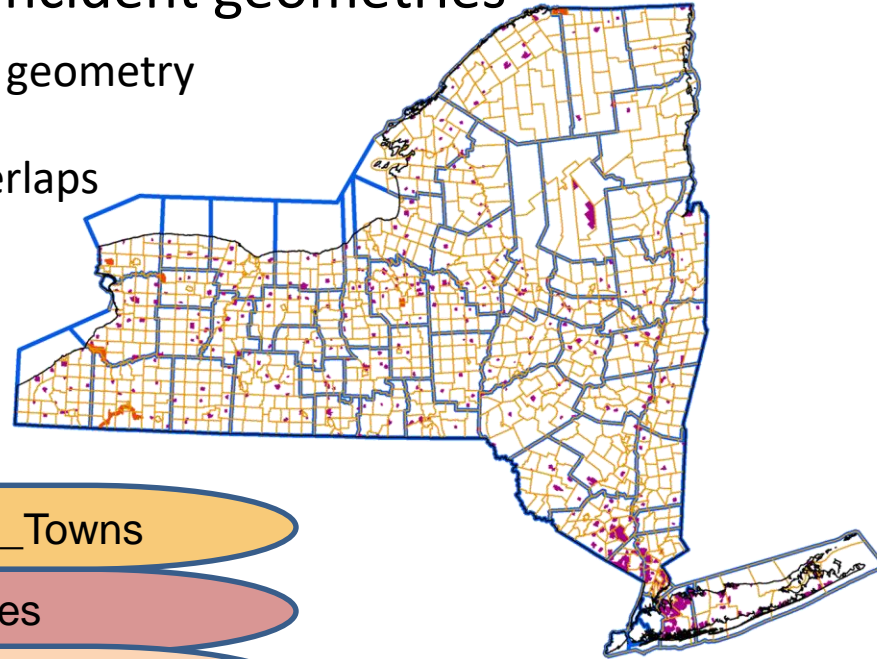
- Orthoimagry
    - As of 2014 min. 1 Foot resolution
    - ± 4 ft horizontal accuracy
  - Street Centerlines
  - Address Points
  - Parcels
  - Local Knowledge
- Ongoing Updates  
Posted quarterly

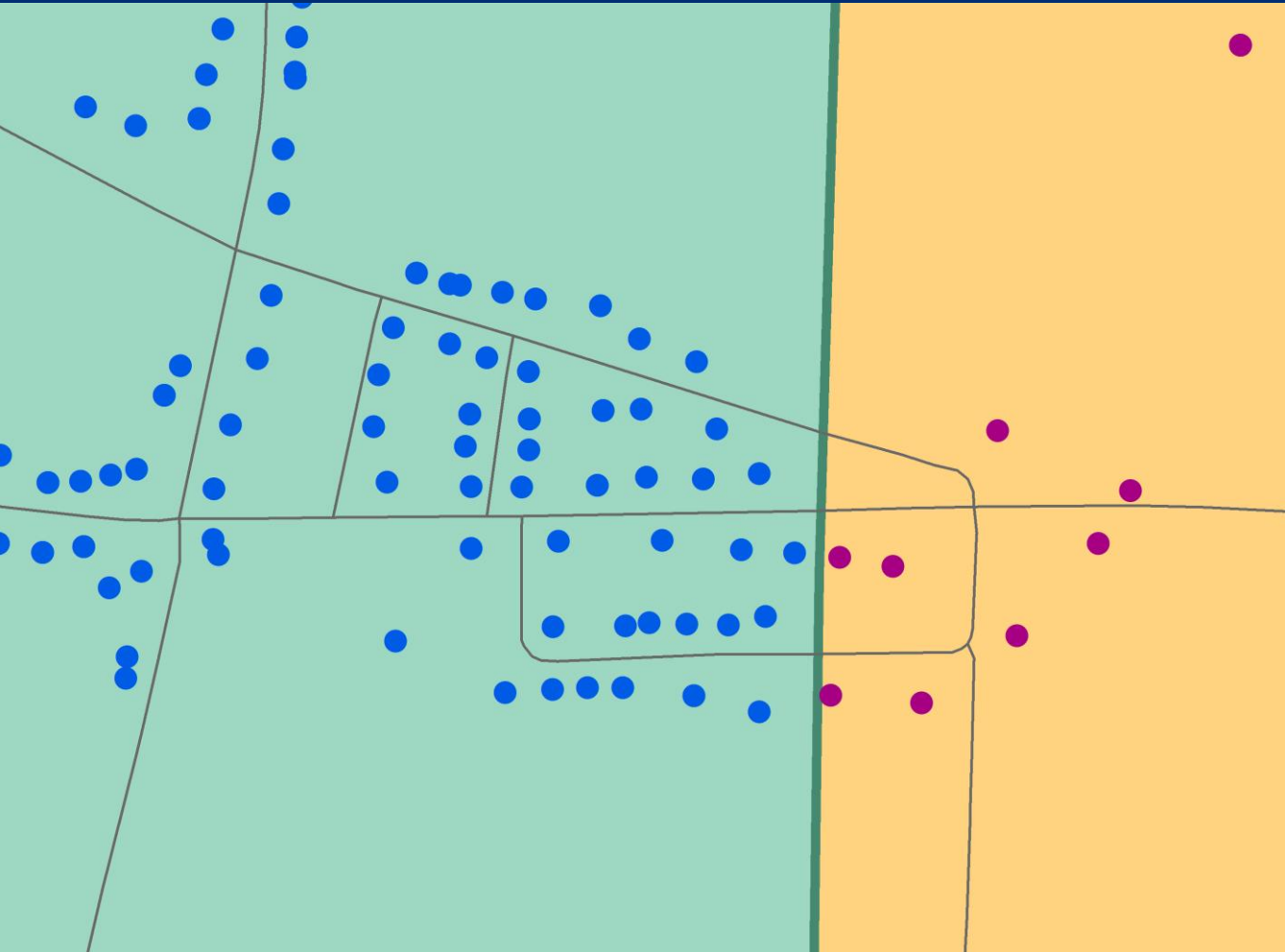


# The Work Being Done

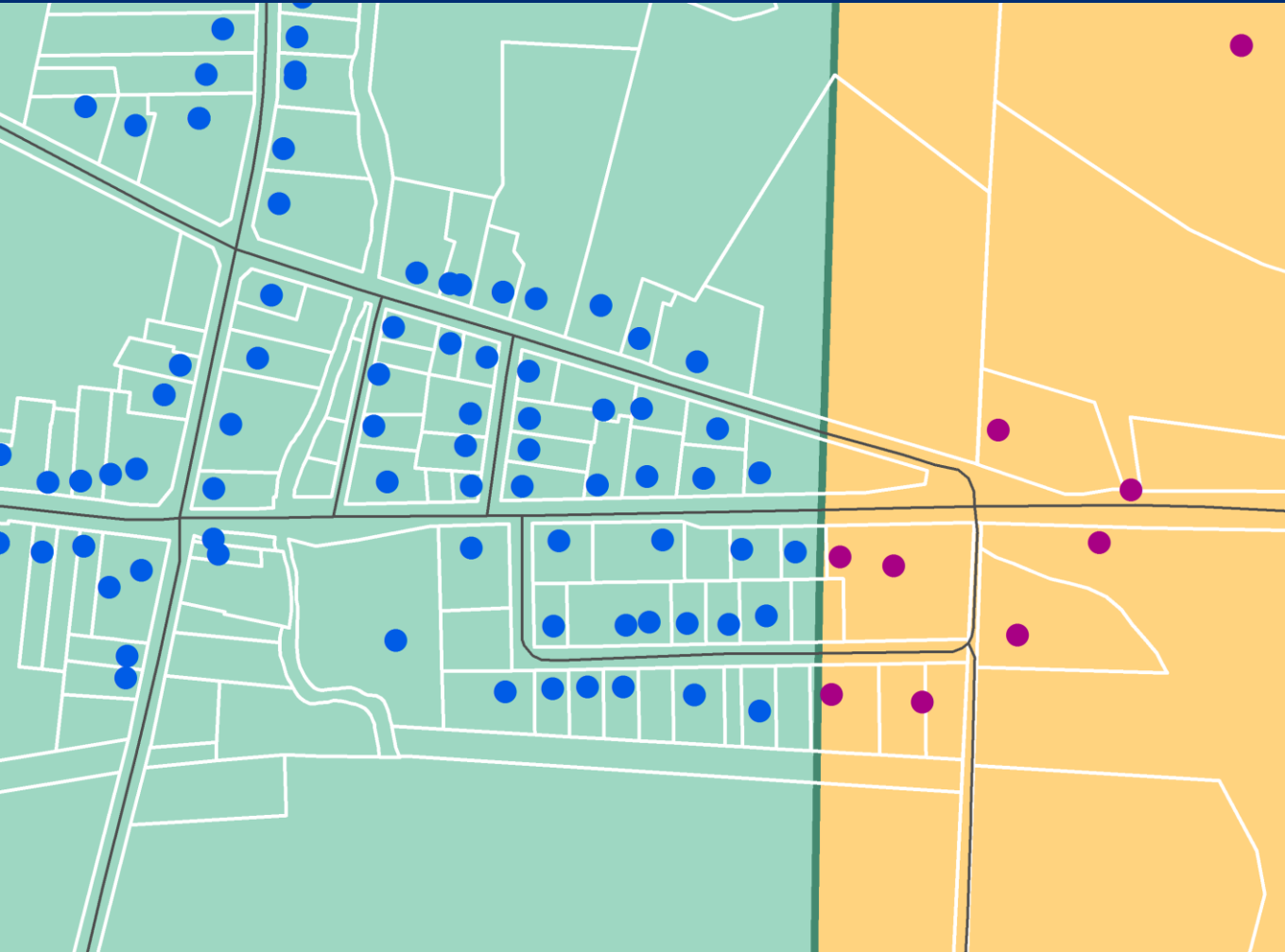
## Topology defines relationships for coincident geometries

- Topology rules determine how features share geometry
  - Adjacent polygons do not have gaps or overlaps
  - Polygons that share an area are coincident or contained within or covered by
- ❖ Scale Matters
- ❖ Editing vs Topology










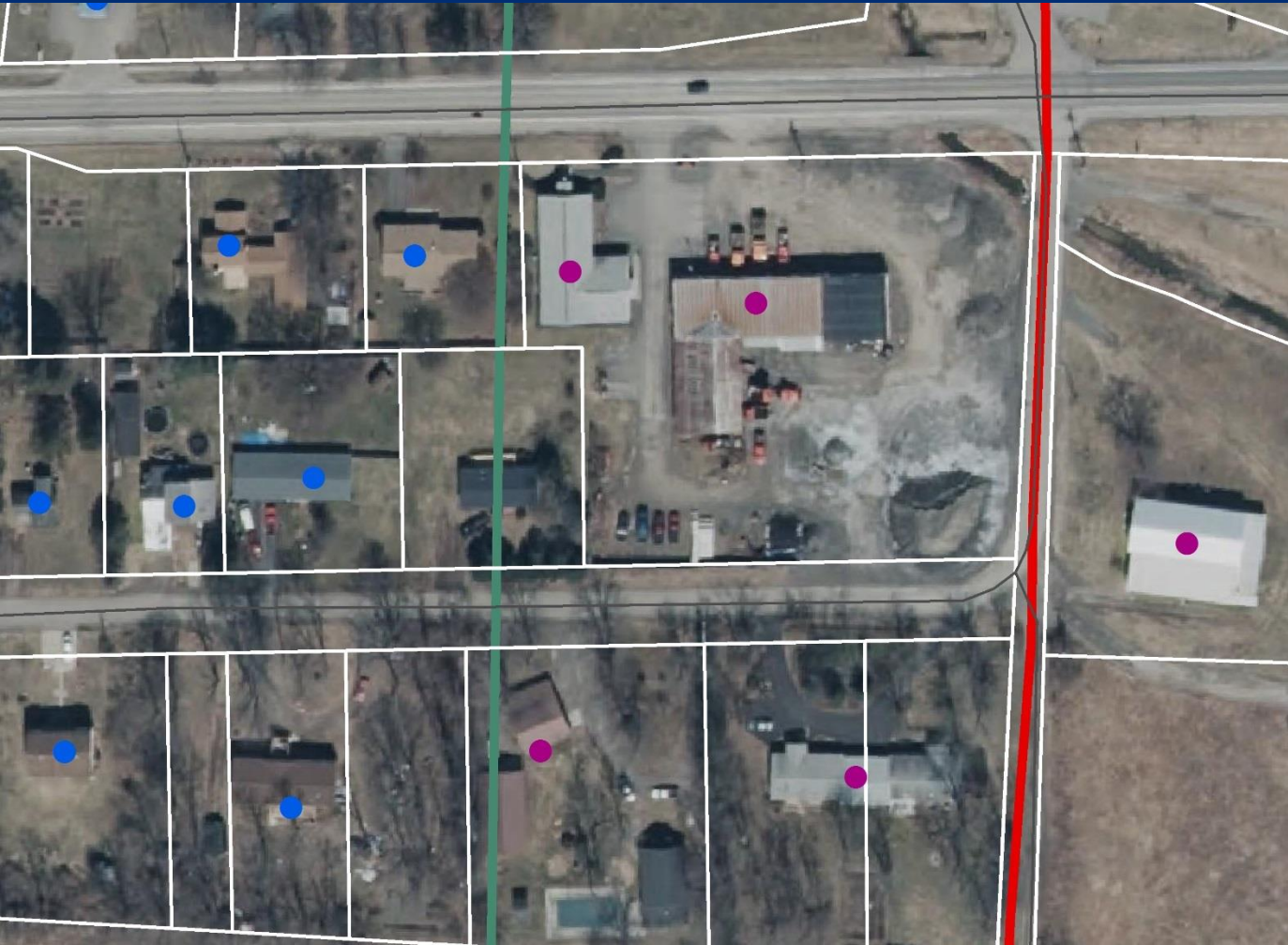
- Village Address Pt
- Town Address Pt
- Village Boundary
- Street Centerline
- Village
- Town



- Village Address Pt
- Town Address Pt
- Village Boundary
- Street Centerline
- Village
- Town



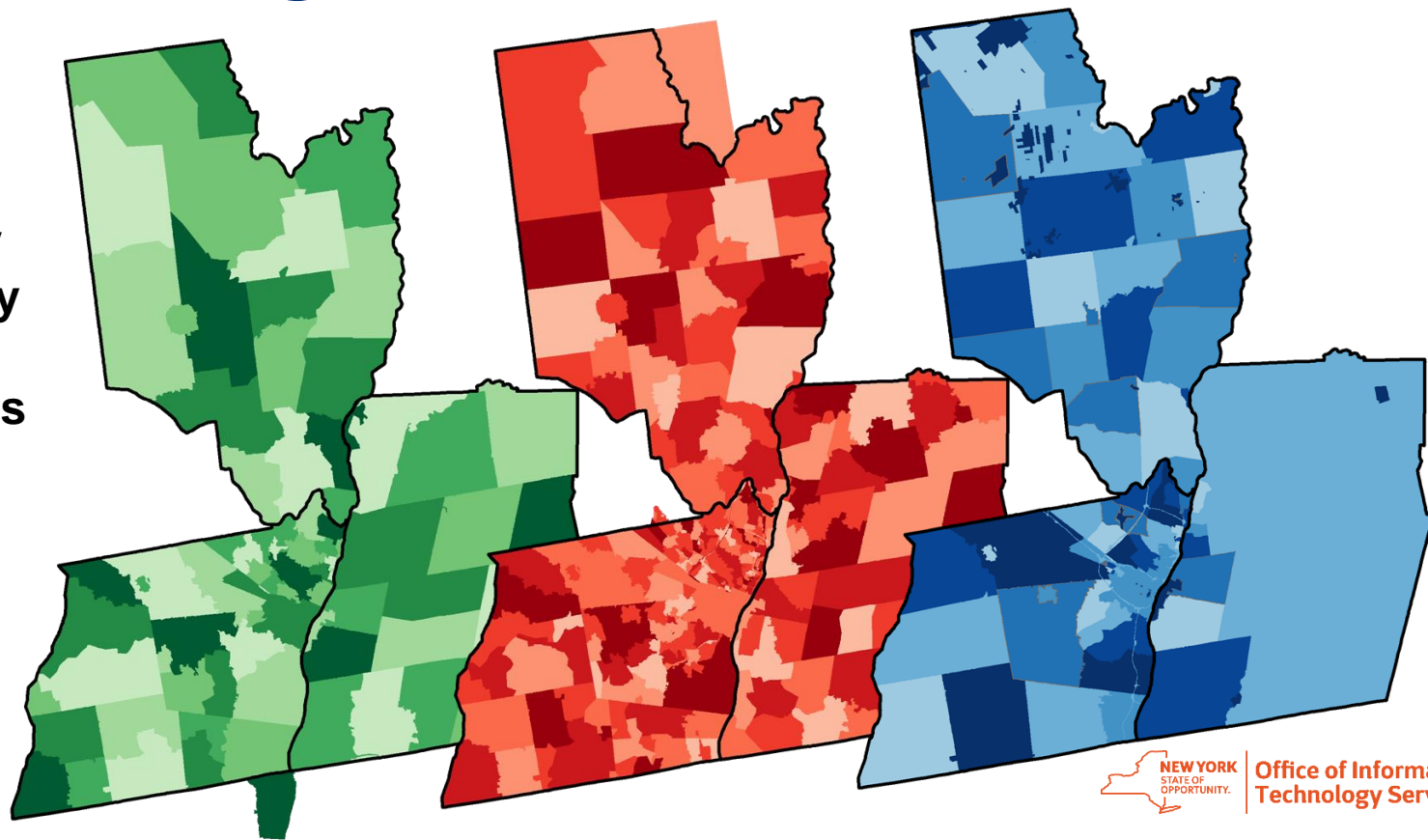
-  New Village Boundary
-  Village Address Pt
-  Town Address Pt
-  Village Boundary
-  Street Centerline
-  Village
-  Town



- Old Village Boundary
- New Village Boundary
- Village Address Pt
- Town Address Pt
- Street Centerline

# The Work Being Done

**Tri-County  
Emergency  
Service  
Boundaries**





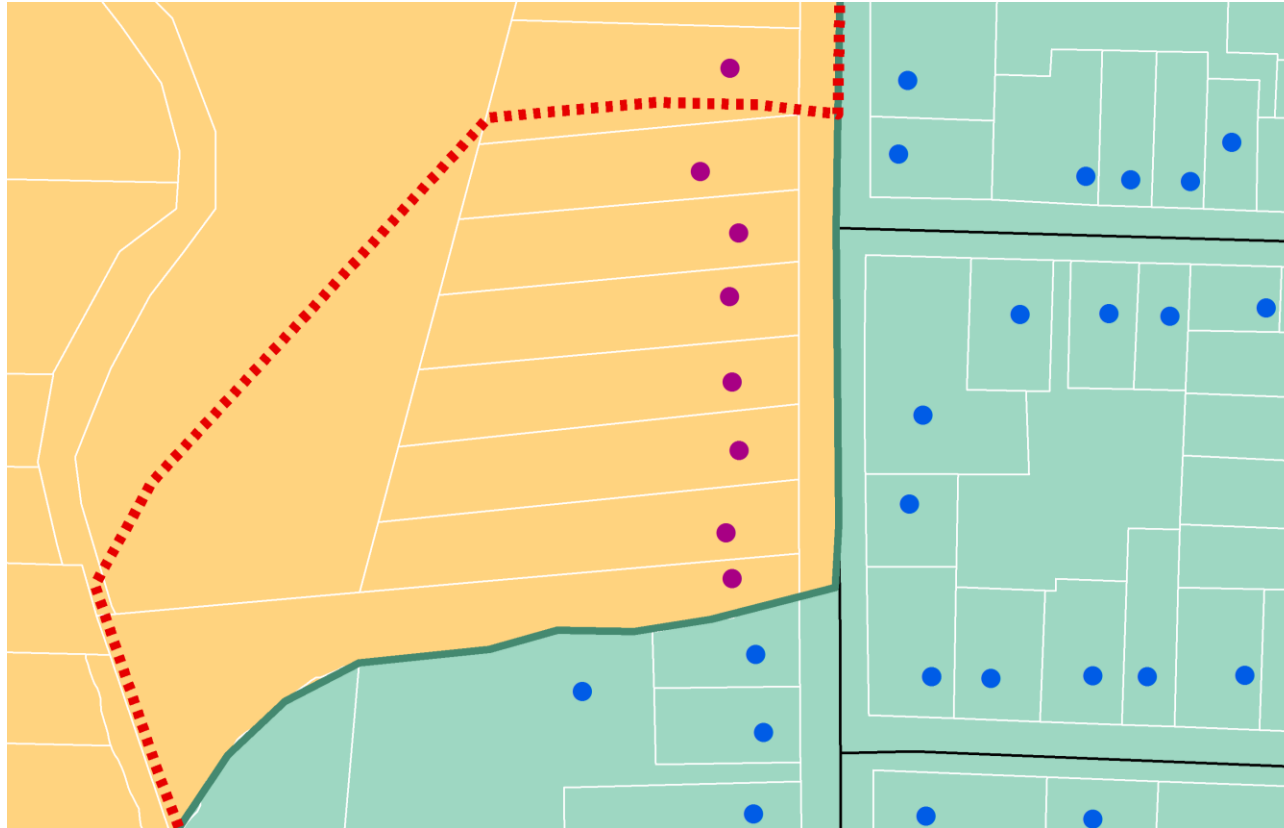
# 2020 Census



# Decennial Census

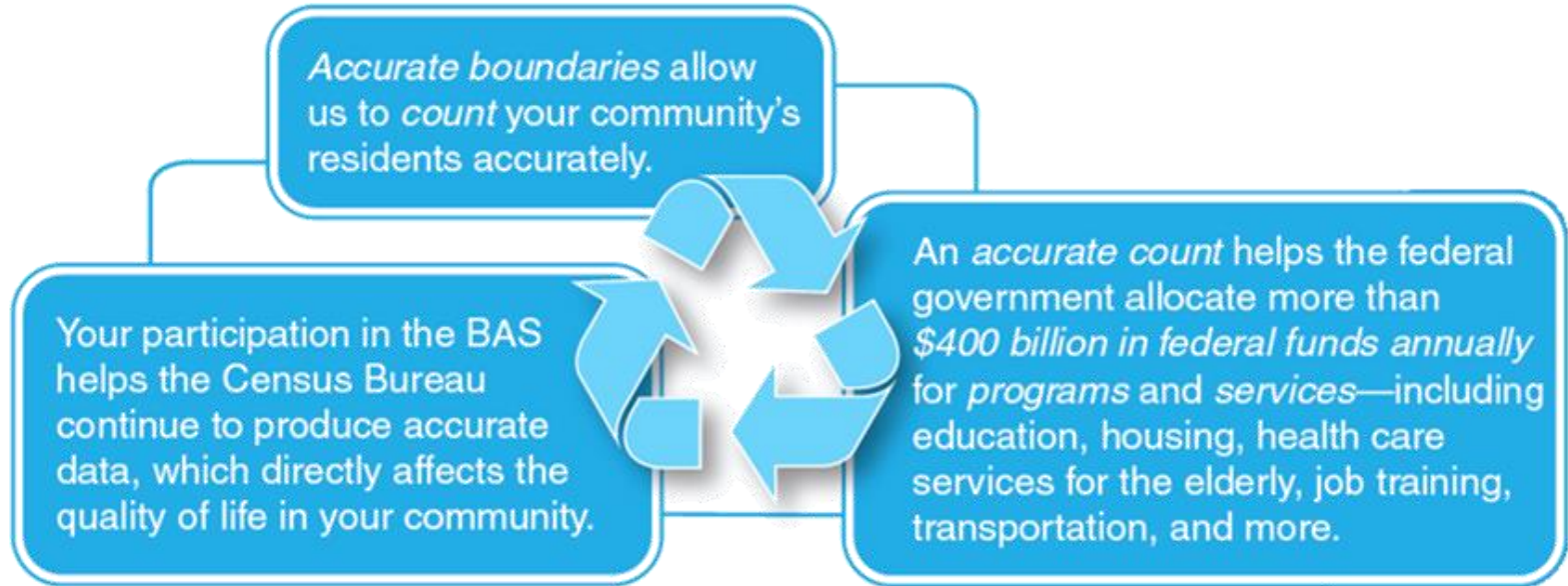
“In addition to apportioning state representation, ...census data will be used to make decisions effecting legislation and spending on housing, highways, hospitals, schools, assistance programs, and scores of projects and programs that are vital to the health and welfare of the U.S. population and economy.”

# Census and Legal Boundaries



- Village Address Pt
- Town Address Pt
- Village
- Town
- Village Boundary
- ⋯ Census Village Bdry

# CENSUS 2020 and the Boundary Annexation Survey (BAS)



<https://www.census.gov/programs-surveys/bas.html>

# Accessing NYS Datasets

<http://gis.ny.gov/>

- geodatabase
- shapefiles
- metadata

The screenshot shows the GIS.NY.GOV website interface. The browser address bar displays 'gis.ny.gov'. The top navigation bar includes 'Services', 'News', 'Government', and 'Local'. Below this, a dark blue header contains 'GIS.NY.GOV' and a menu with 'Data', 'Coordination', 'Ortoimagery', 'GIS Program Office', and 'ShareGIS'. The 'Data' menu is expanded, showing a list of datasets: 'Data Catalog', 'Ortoimagery', 'Streets', 'Parcels', 'Addresses', 'Elevation', 'Civil Boundaries', 'Raster Maps', and 'Web Services'. The 'Civil Boundaries' item is highlighted with a yellow background. To the right of the menu is a map of New York State with county boundaries. In the bottom right corner, there is a logo for 'NEW YORK STATE OF OPPORTUNITY' and the text 'Office of Information Technology Services'.

# Accessing NYS Datasets

<http://gis.ny.gov/>

- geodatabase
- shapefiles
- metadata



## GIS Data Set Details

Data Set Name	Description	Theme	Metadata
NYS Civil Boundaries (includes NYS County Boundaries - Shoreline Version) <i>Revised: October 2017</i>	Datasets of boundaries for incorporated places (state, counties, cities, towns, and villages) and Indian territories in New York State. Data includes shoreline versions of the state boundary and county boundaries.	Boundaries	<a href="#">City/Town County Shoreline</a> <a href="#">Indian Territories State</a> <a href="#">State Shoreline Villages</a>

### Supporting Documentation

NYS Civil Boundaries data are also available as web services: <https://gisservices.its.ny.gov/arcgis/rest/services/>

### 📁 Files available to the Public

Files	Download	Metadata
NYS Civil Boundaries	 <a href="#">GEODATABASE</a>  <a href="#">SHAPE</a>	<a href="#">Metadata</a> -

# Accessing NYS Datasets

<https://gisservices.its.ny.gov/arcgis/rest/services//>

## ArcGIS REST Services Directory

[Home](#) > [services](#)

[JSON](#) | [SOAP](#)

### Folder: /

Current Version: 10.31

View Footprints In: [ArcGIS Online map viewer](#)

### Folders:

- [Locators](#)
- [State Spending](#)
- [Utilities](#)

### Services:

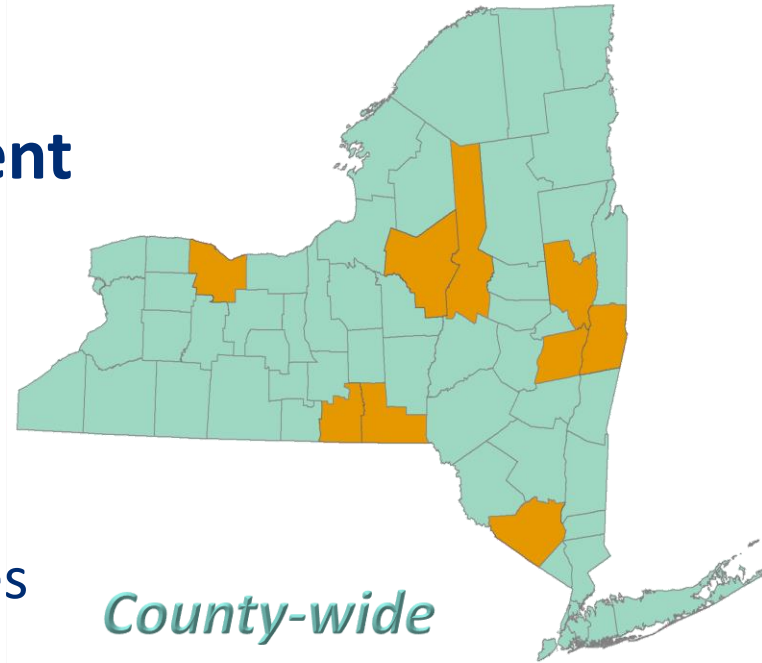
- [NYS Assembly Districts](#) (FeatureServer)
- [NYS Assembly Districts](#) (MapServer)
- [NYS Civil Boundaries](#) (FeatureServer)
- [NYS Civil Boundaries](#) (MapServer)
- [NYS Congressional Districts](#) (MapServer)
- [NYS Senate Districts](#) (FeatureServer)
- [NYS Senate Districts](#) (MapServer)
- [NYS Tax Parcels Shareable Public](#) (MapServer)
- [NYS Tax Parcels State Owned](#) (MapServer)
- [SAM Address Points Symbolized](#) (MapServer)
- [SAM Address Points](#) (MapServer)

Supported Interfaces: [REST](#) [SOAP](#) [Sitemap](#) [Geo Sitemap](#)

# The Work Being Done

## Increased Level of Local Involvement

- Civil Boundaries Enhancements
- Streets and Address Points – GeoLynx
- NG9-1-1 Emergency Service Boundaries



*County-wide  
improvements to date*

# Questions or Comments?

GISboundaries@its.ny.gov

## Robert Gehrer

Program Manager  
State Police GIS Support & Boundaries  
NYS GIS Program Office  
(518) 242-5047  
Robert.Gehrer@its.ny.gov

## Karen Henry

Technical Lead  
Civil Boundaries Program  
NYS GIS Program Office  
(518) 242-5040  
Karen.Henry@its.ny.gov

