



Advancements in GIS for Local Governments



Data Collection



Data Collection Obstacles



Who Has One of These?



Bluetooth[®] GPS Devices







Environmental
Finance
Center

Syracuse University

Non-For Profit



Academia

Pratt Northam Foundation

Foundations

P
A
R
T
N
E
R
S
H
I
P
S



More GIS Alternatives



SO MANY CHOICES...

Open Source

QGIS

Google Trends

(United States)



Jan-04

Jan-06

Jan-08

Jan-10

Jan-12

Jan-14

Jan-16



Add PostGIS Table(s)

Connections

Tug Hill

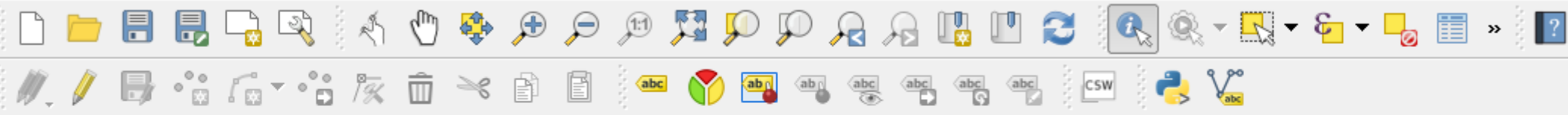
Connect New Edit Remove Load Save

Schema	Table	Comment	Column	Data Type	Spatial Type	SRID
public						
special_areas						
town_lee						
town_lorraine						
town_lowville						
town_martin...						
town_redfield						
village_barne...						
village_boon...						
village_crogh...						
village_remsen						

Also list tables with no geometry Keep dialog open

Search options





Browser Panel

- Home
- Favourites
- C:/
- D:/
- J:/
- DB2
- MSSQL
- Oracle
- PostGIS
- SpatialLite

Layers Panel

- Town of Lee Curb Stops
- Google Streets



QGIS

2.18.13



2.99 Beta (Soon 3.0)

Low Cost & Flexible Solutions



Flexible User Licensing

Built On PostGIS

Lower Cost Solution

GIS Home Map Layer Feature Analysis Tools

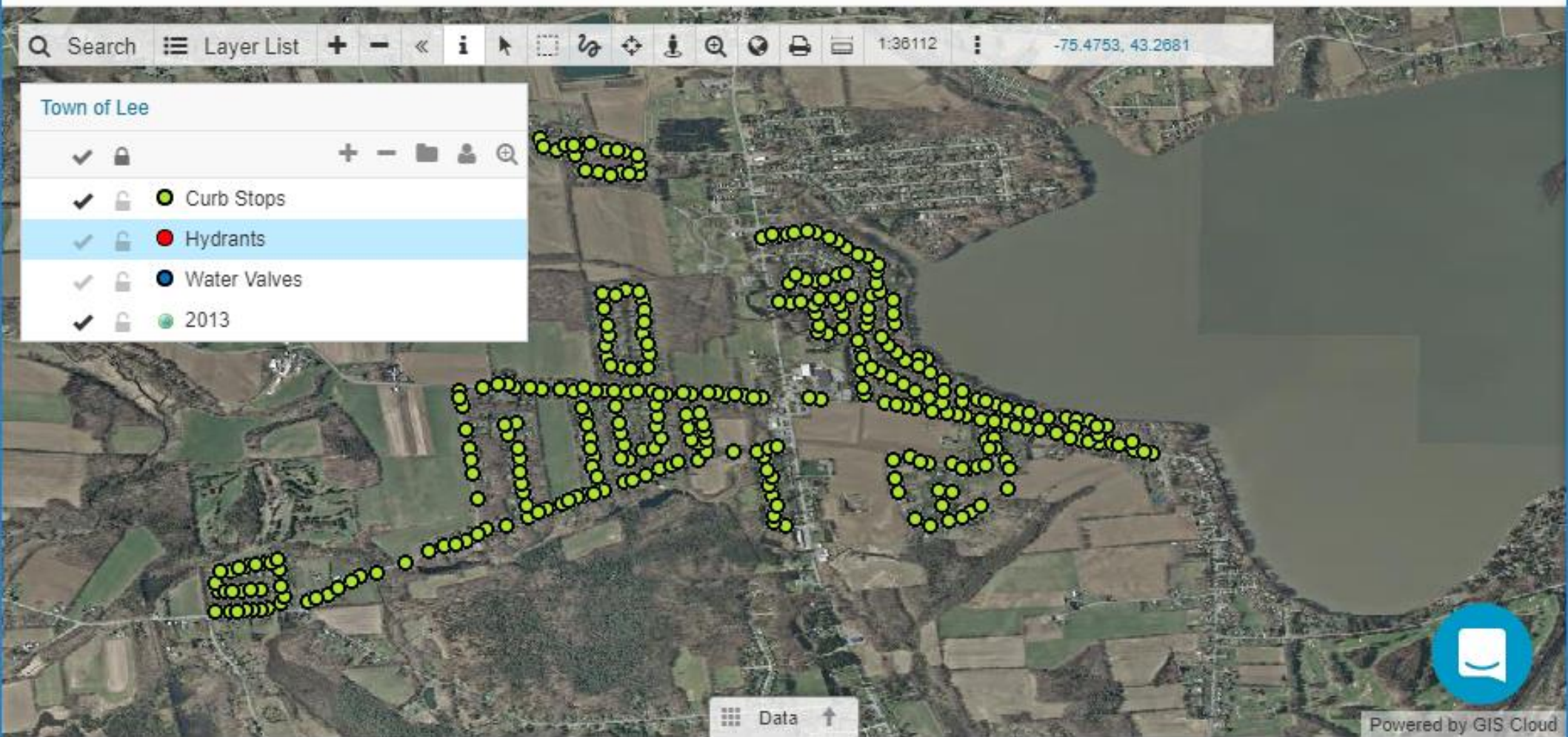
New Map
 Map Properties
 Refresh
 Duplicate Map
 Delete Map
 Add Layer
 Import CSV or XLS
 Share or Publish
 Export Map
 Bookmarks

Search
 Layer List
 +
 -

 1:36112
 -75.4753, 43.2681

Town of Lee

-
- Curb Stops
- Hydrants
- Water Valves
- 2013



Data ↑

Powered by GIS Cloud



Mobile Data Collection

Projects **Maps & Layers**

Maps

Town of Lee

Layers

Curb Stops

Refresh form

Offline maps

Application

Zoom after send
 No

Follow user on map

Form Map

GPS Pinpoint Select location

Size
Please choose

Used
Yes

Photos
Album Camera

Audio
Record Play Delete

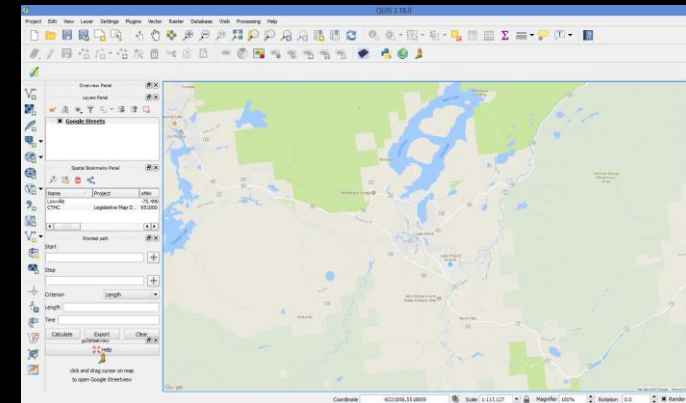
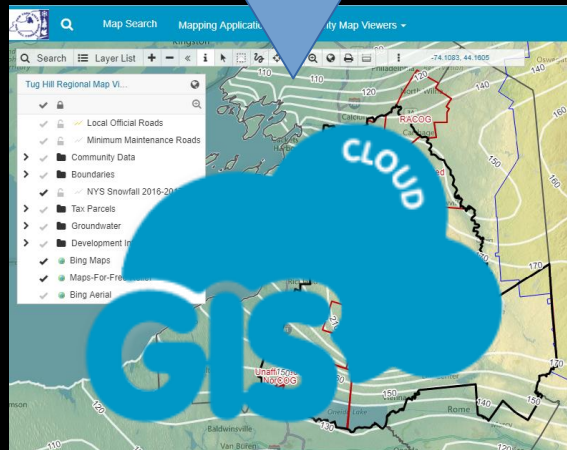
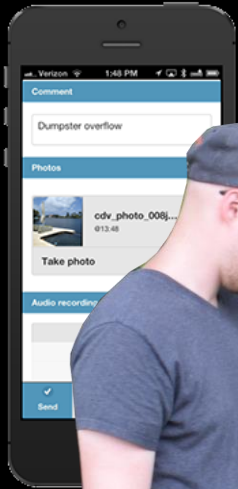
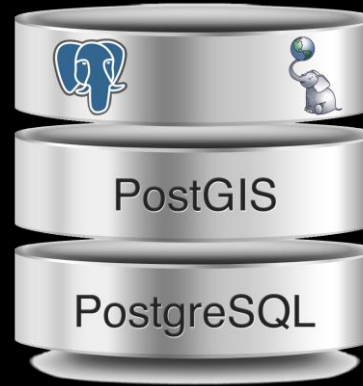
Street Name
Please choose

Comments
Send Queue Map Settings

What We Use



amazon
web services



GIS Advancements

Open Source Is A Player In The GIS Game



GIS Advancements

Bluetooth GPS Receiver



GIS Advancements

Partnership Opportunities



LOCAL GOVERNMENT



GIS

What Interested You The Most?

Mickey Dietrich



RACOG Local Government Advisor

GIS Specialist

NYS Tug Hill Commission

317 Washington St.

Watertown, NY 13601

(315) 785-2389

mickey@tughill.org