

NYCYCLIST DATA EDITOR

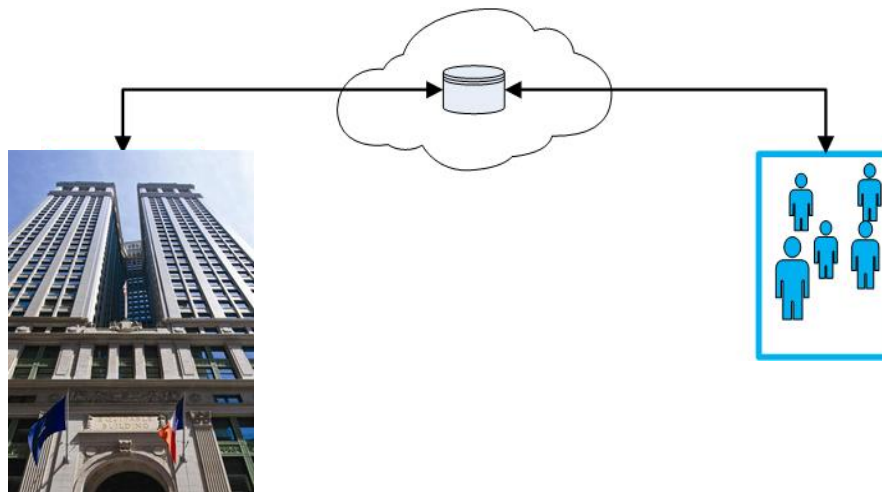
NY GeoCon

October 2017

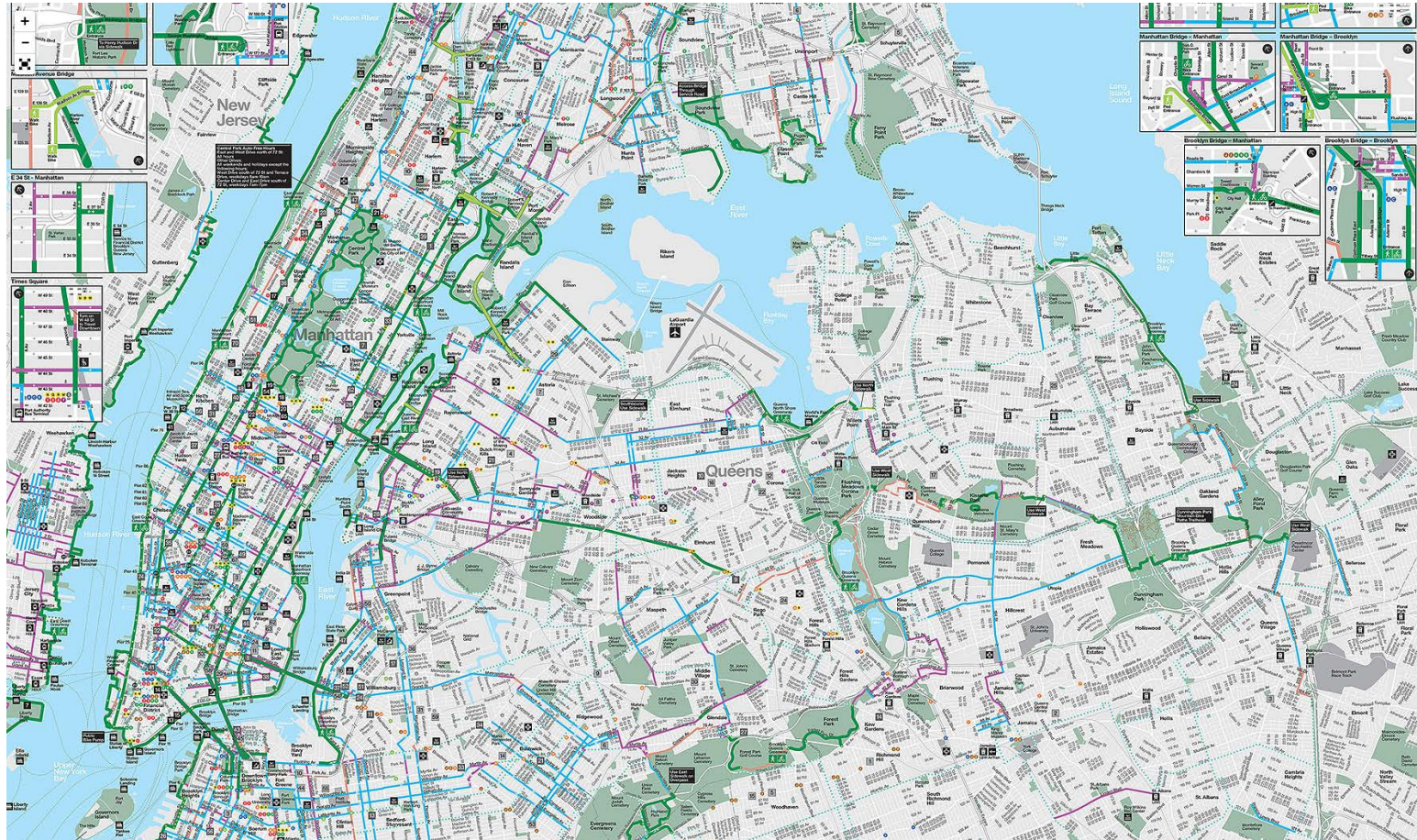
- Introduce crowdsourcing application for New York City's spatial data
 - Bike routes
 - Building footprints
- Describe GeoGig
- Recruit cyclists, developers and GIS users as pilot users

Goal: Create a tool to facilitate government ↔ citizen spatial data collaboration.

- Project Team
 - Project Champion: NYC DCP
 - Key Contributors: NYC DOT & NYC DoITT
 - Vendors: Boundless & GeoDecisions
- Validate the tool through a yearlong pilot with up to 100 users
- Uses only City data
 - **Bike routes:** Maintained by NYC DOT
 - **Building footprints:** Planimetric data maintained by NYC DoITT

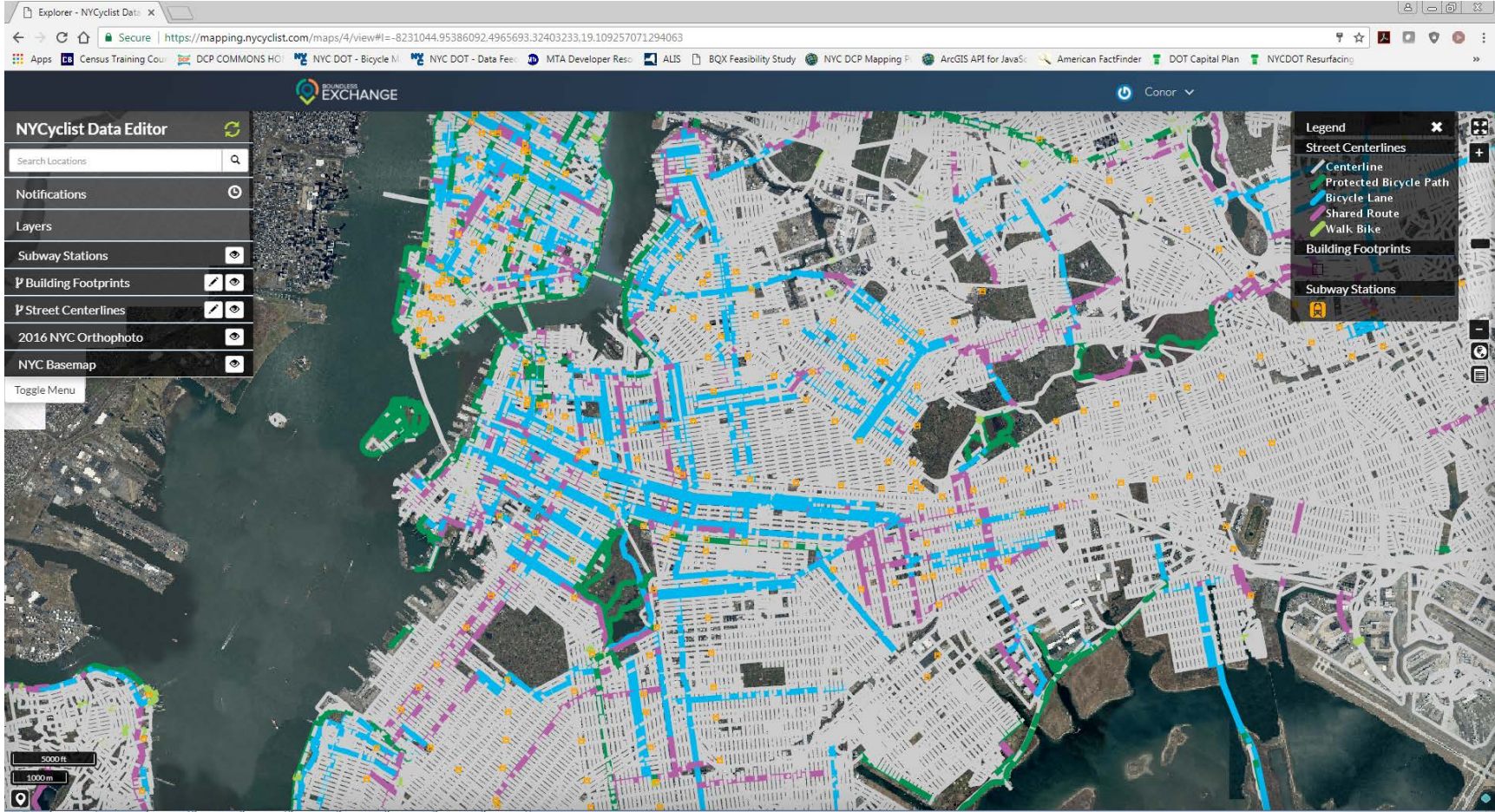


NYC Bike Map:

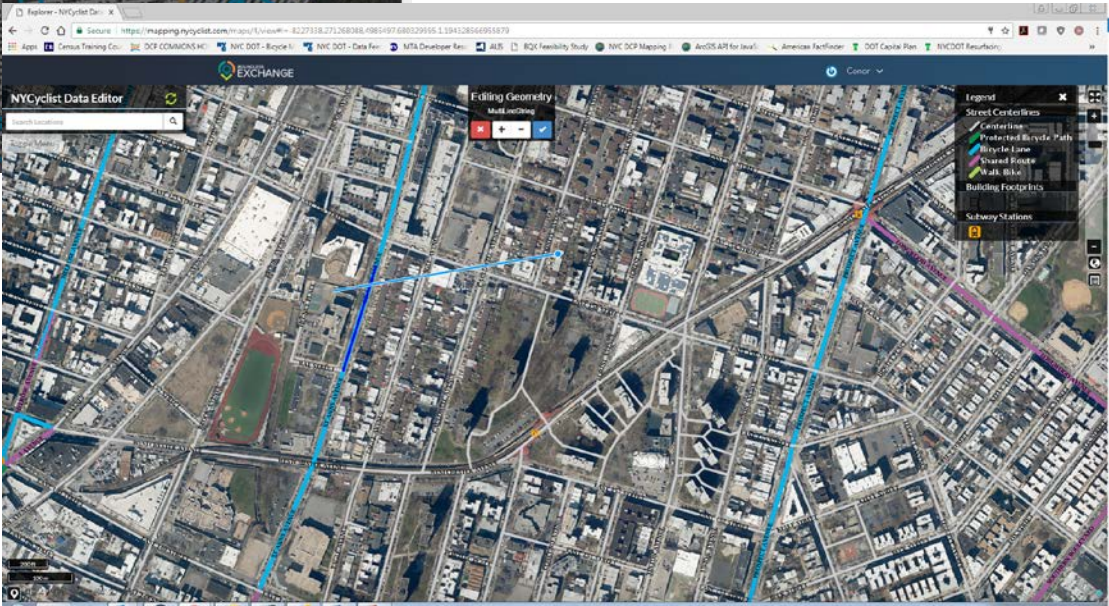
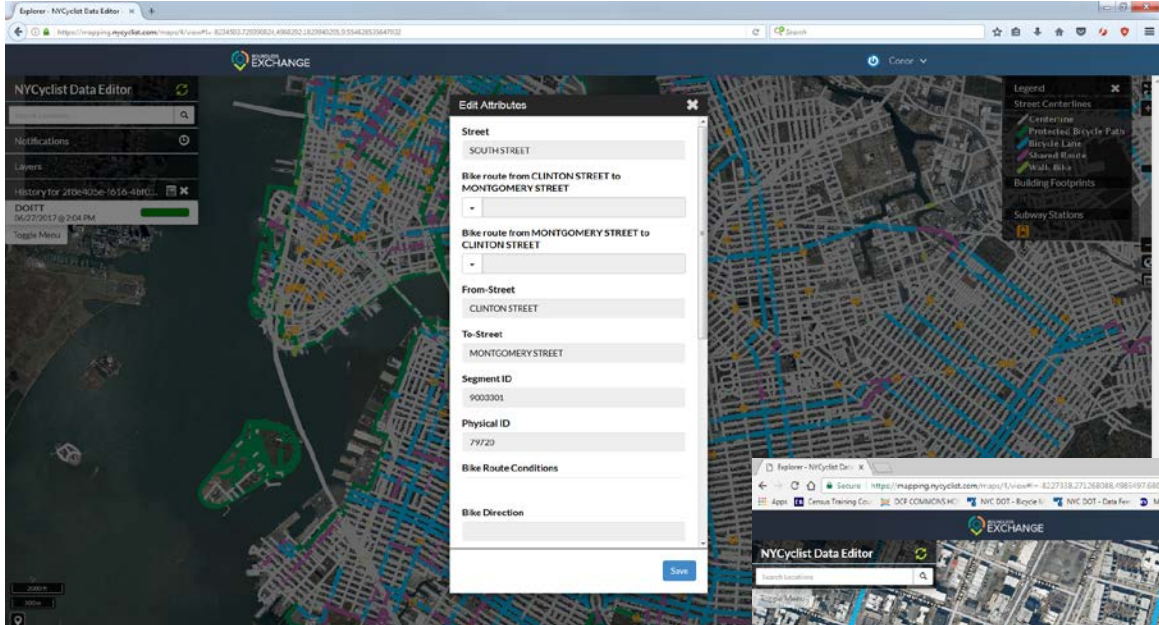


Bike Routes and Building Footprints

Webmap user interface:

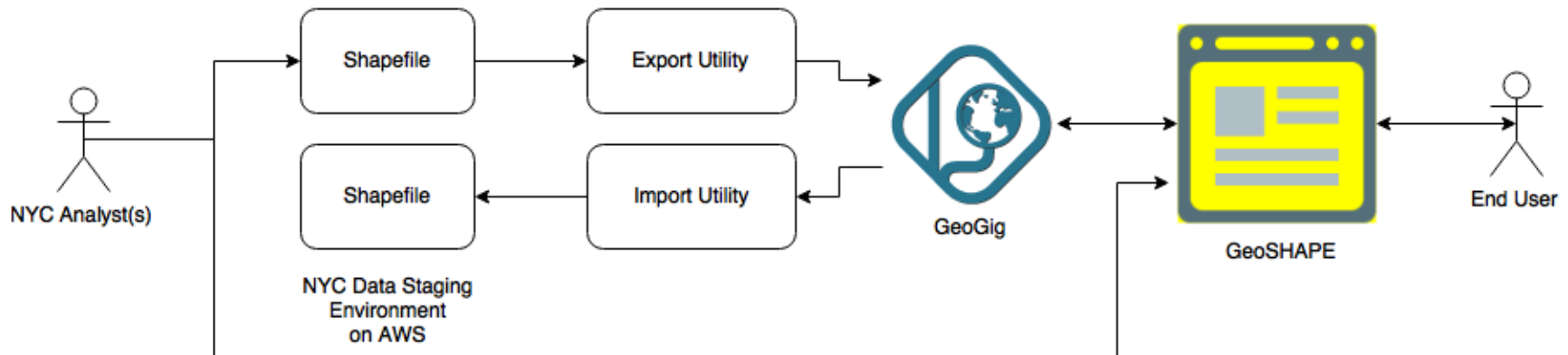


Crowdsourced Editing



NYCyclist Feedback Loop

Users will log in, and make edits in the webmap environment. The city will import the data, accept or reject edits and export the data back to the app.

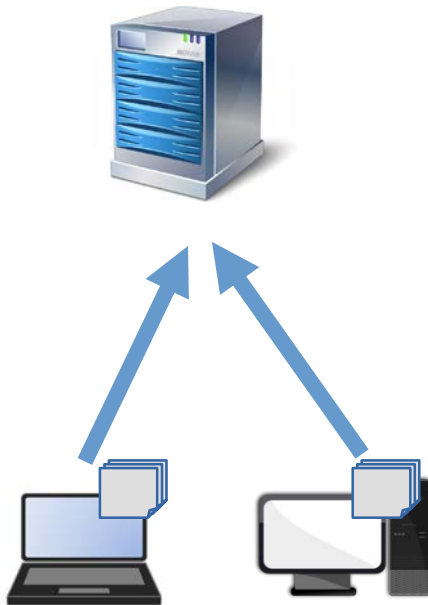


What is GeoGig?

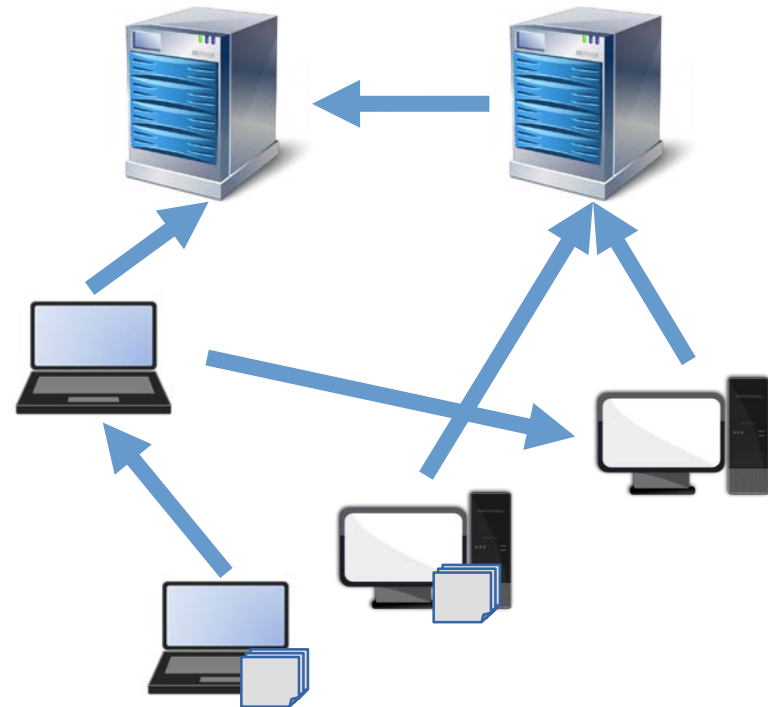


- GeoGig is a **Distributed** Version Control System for Geospatial Information

Centralized



Distributed

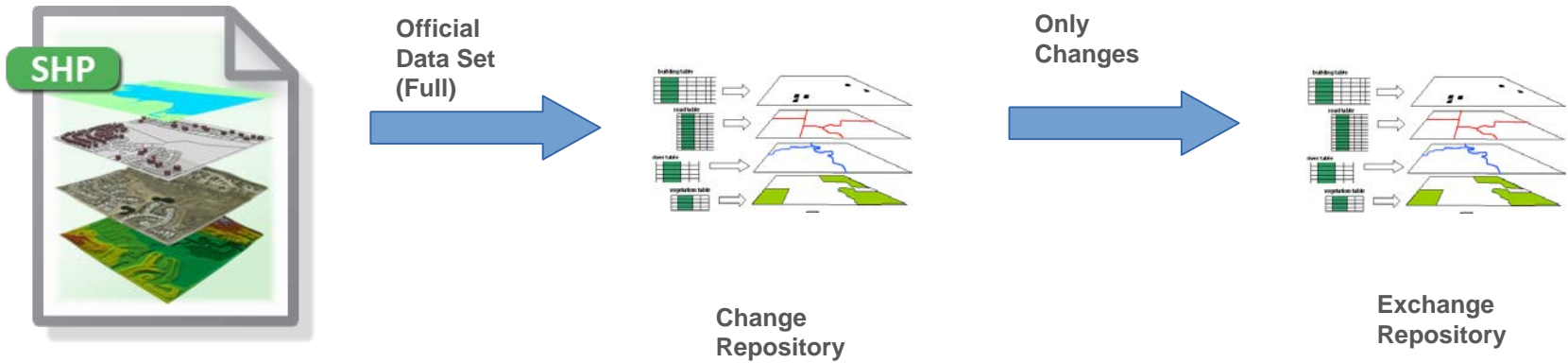


- System of Record is ESRI SDE and importable from Shapefiles
- “But we do not want to overwrite everybody’s edits every time we refresh from the official repository...”

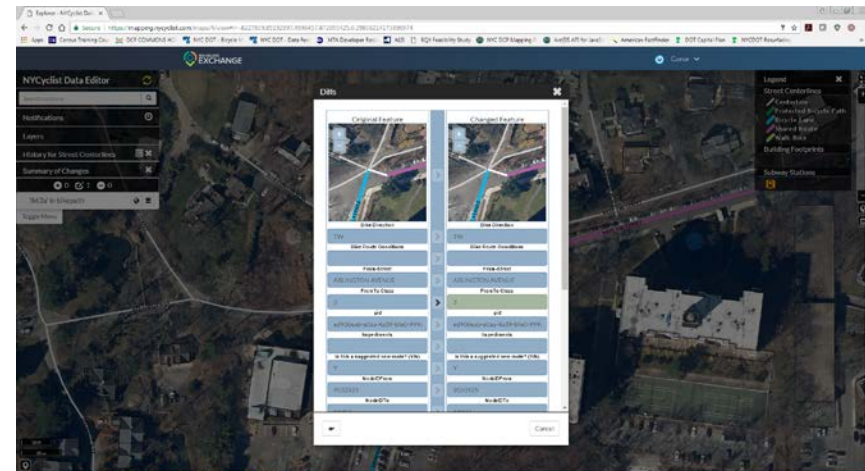
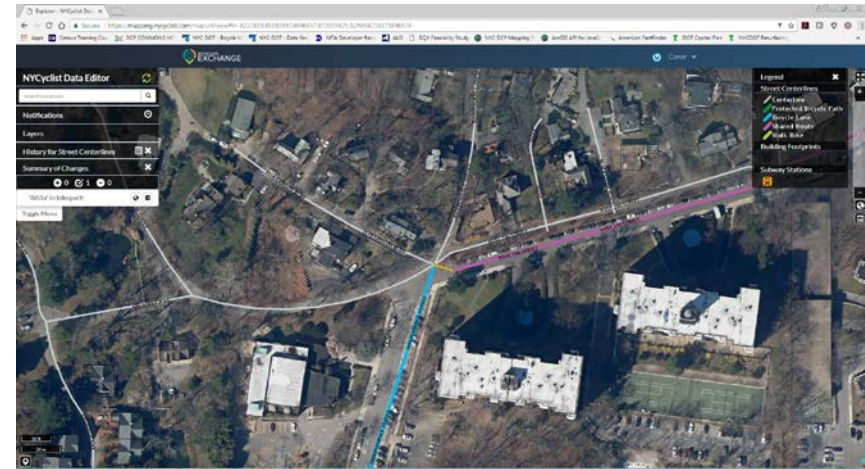
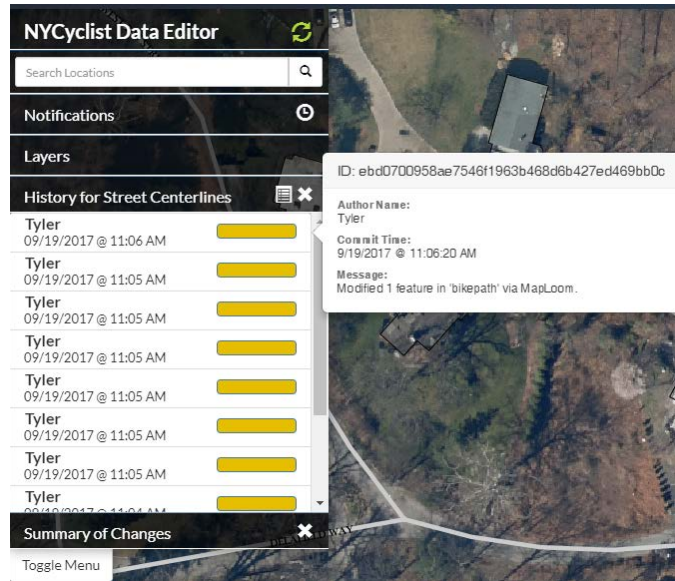


Our Solution

- Our Solution...Two GeoGig repos



NYCyclist Tracks History



- Choosing a commit, from a layer's edit history, the list of its changes is displayed.
- Selecting the change provides its graphic representation.

- Bureaucracy is bureaucratic
- Technology moves fast
- People like to be creative

Volunteer!

- We are recruiting 100 users for the pilot project. Give me your info.
- Tell your cyclist, developer and GIS-user friends.



Contact: Conor Clarke
cclarke@planning.nyc.gov
212-720-3329