

Federal HLS GIS Resources For New York State and Local Use

Via HSIN Connect...a free service!

A copy of this webinar will be made available to all who pre-registered



HIFLD/HSIP Overview & FEMA GeoPortal Review
Alan Leidner HIFLD/HTTR Julia O'Brien FEMA Region 2
January 24th 2013

Need help getting resources?

Don't worry if you miss something!



Just Make The Connection!

Alan Leidner

leidner_alan@bah.com

212-551-6416

Federal HLS GIS Resources For New York State and Local Use

- *The GIS Response to 9/11*
 - *The importance of comprehensive, national infrastructure data*
- The HIFLD Program: *Homeland Infrastructure Foundation Level Data*
 - HSIP Gold and HSIP Freedom Data sets*
 - HIFLD Website*
- Homeland Security Information Network*
 - OneView: View HSIP Gold Data*

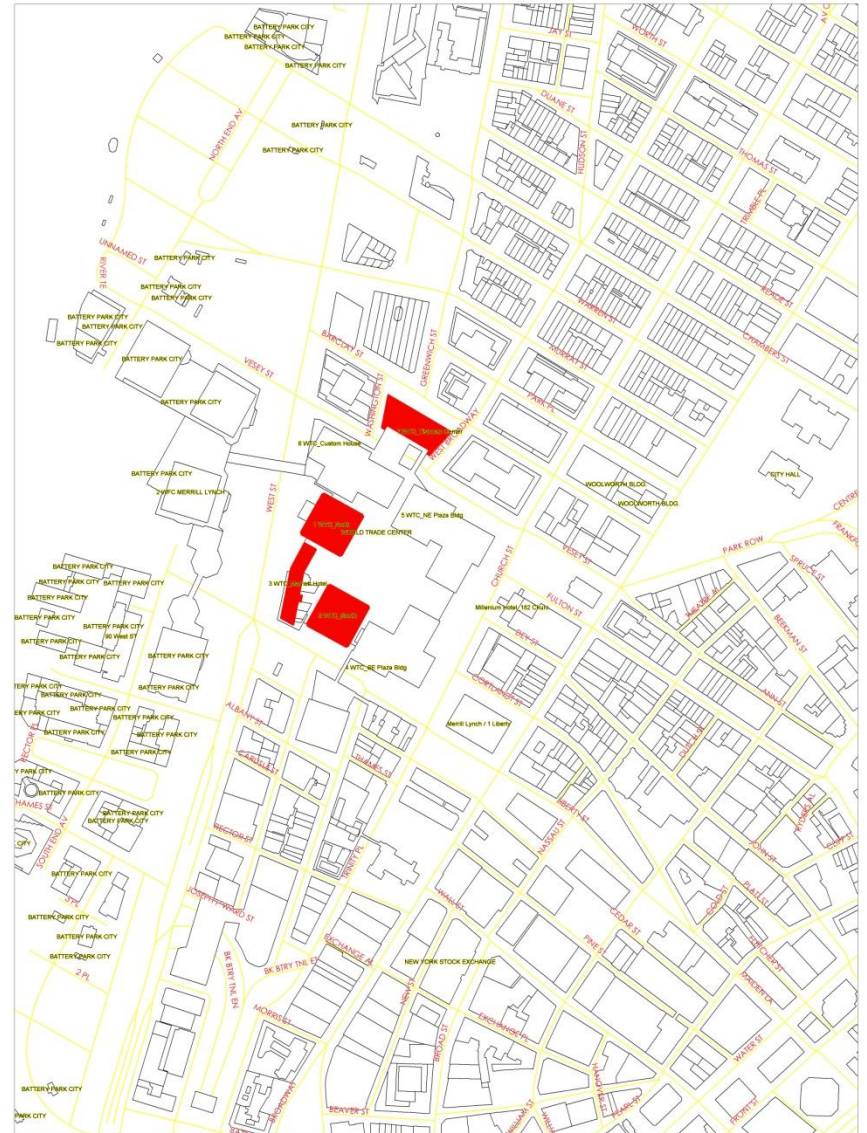
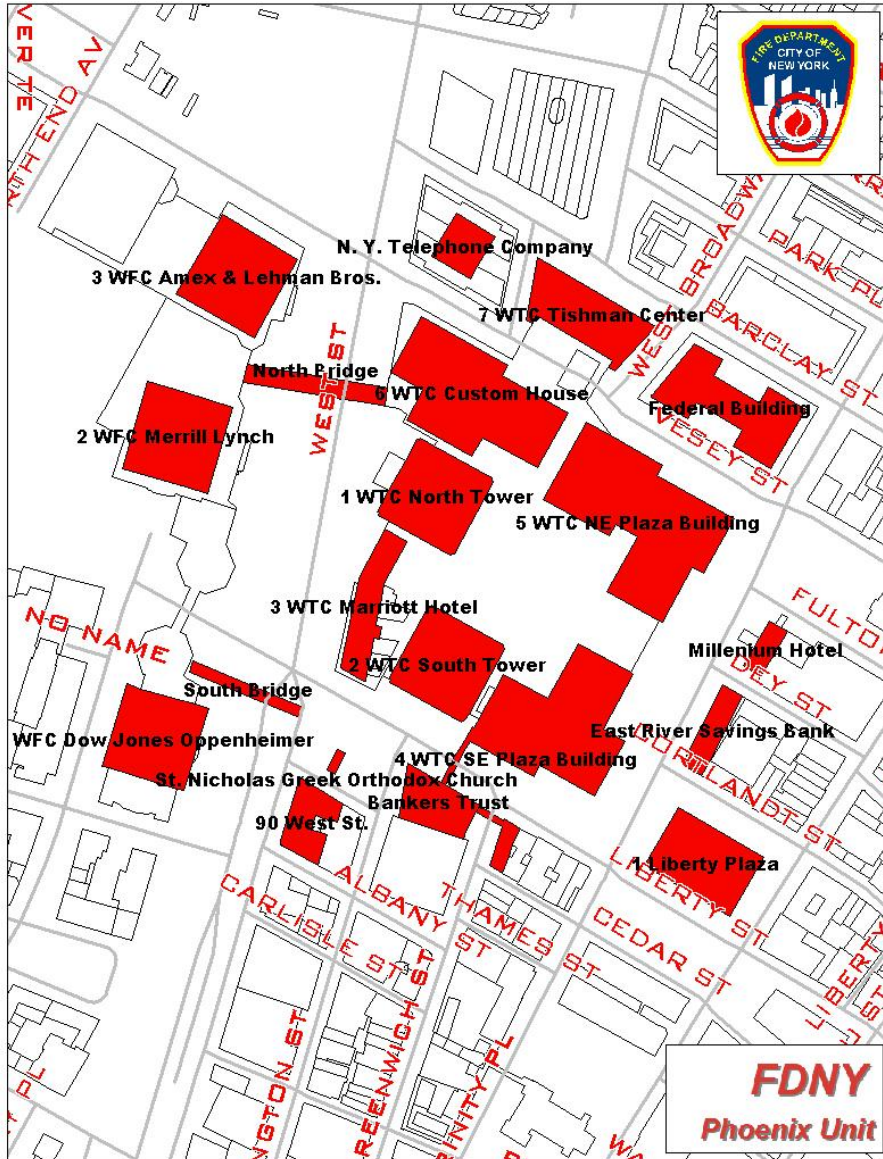
The GIS Response to 9/11

A City, Regional, State and National proving ground



The First Map Created in Response to the Attack

FDNY Captain Justin Werner, Dana Schiavo, Chang Chung

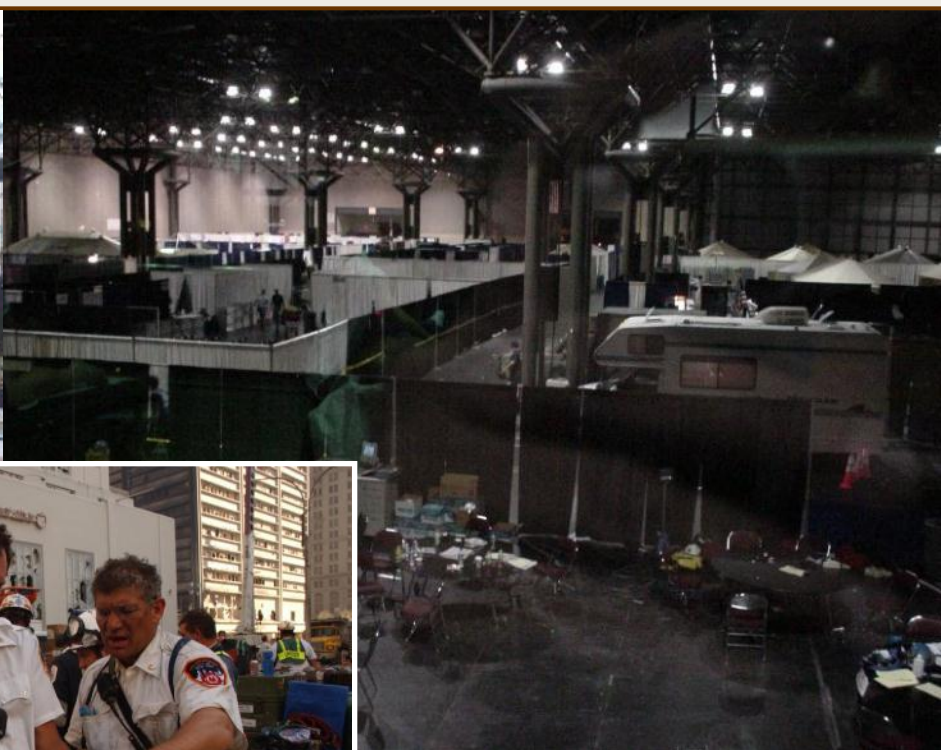




Ronald Langhelm
FEMA GIS

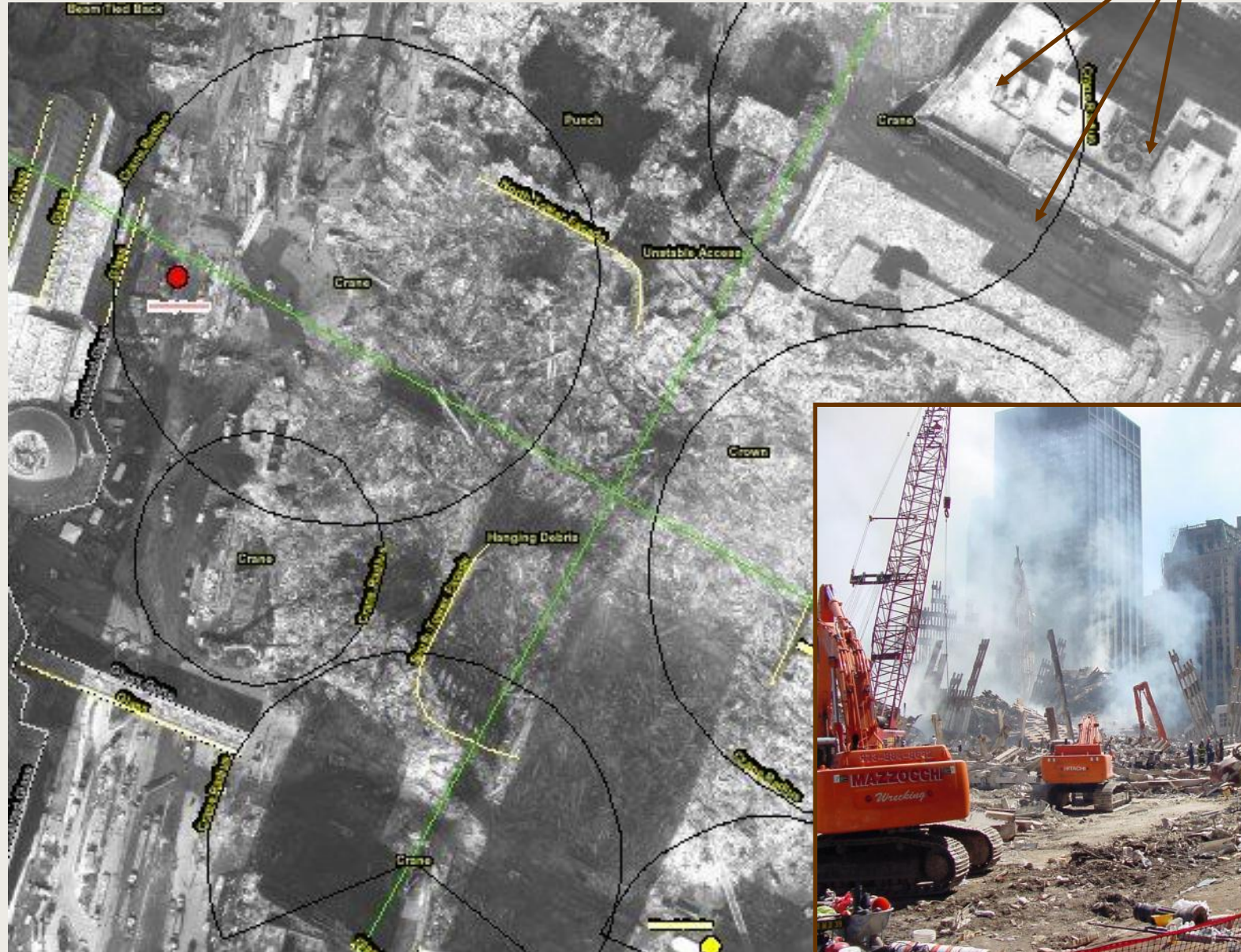
World Trade Center 9-11-01

DR-1391-NY



Crane Placement

Hazards



The background of the slide is a photograph of the New York City skyline. The Statue of Liberty is prominent in the center-left foreground. Behind it, various skyscrapers of Lower Manhattan are visible. A large, dark, billowing plume of smoke or steam rises from the city, partially obscuring the sky and some buildings. The sky is a pale blue with some light clouds.

Imagery to support the World Trade Center Recovery Efforts

Bill Johnson, NYS Office of Cyber Security
Bruce Oswald, Oswald Associates



- Favorites
- Add... Organize...
 - Dell
 - feds
 - GIS - Non-NYS
 - Links
 - mapping
 - MEDIA
 - Misc
 - New Folder
 - NYS
 - Orthos
 - States
 - Accident Location Information...
 - Albany Satellite by Intellicast
 - Arkansas - Center for Advanc...
 - EarthData - WTC site
 - Edward Tufte and Graphics Pr...
 - EVTA Home Page
 - Interactive Weather Informat...
 - LeaderView-360 Questionnaire
 - MSN.com
 - new orthos
 - New York State Legislative Ta...
 - NYC Emergency Response Im...
 - NYS GIS Clearinghouse -
 - NYS Office for Technology - M...
 - ortho app - Nassau County
 - Radio Station Guide
 - Town of Amherst Map Machine
 - weather.com - NE Radar

- NYC Emergency Response Home Page
- Flight Information
- Available Products
- FTP Instructions
- Reference Information
- Contact Listing

NYC Emergency Response Available Imagery Products

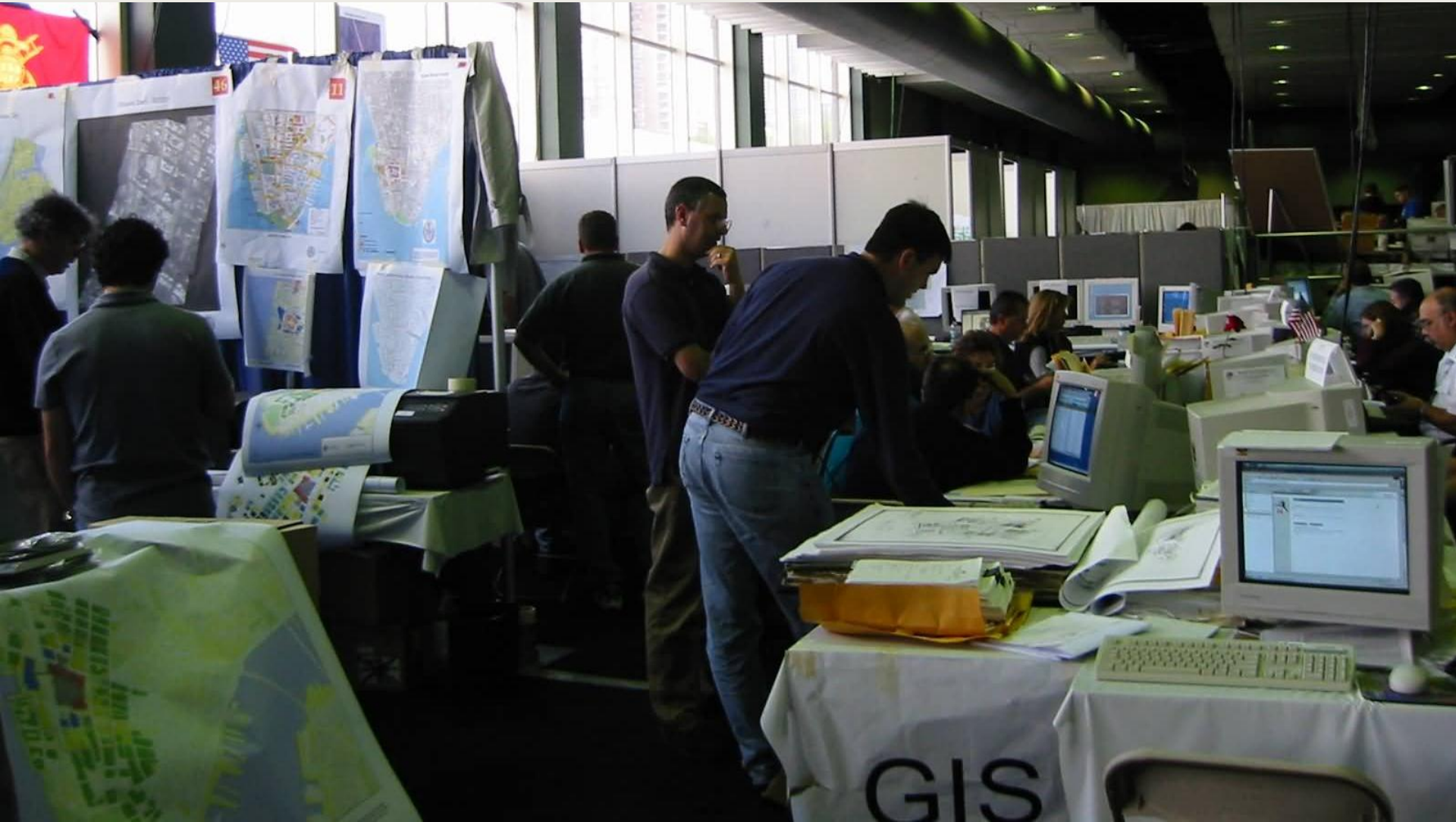
- [Digital Orthoimagery](#)
- [Thermal Imagery](#)
- [LIDAR Imagery](#)
- [CAP Photos](#)

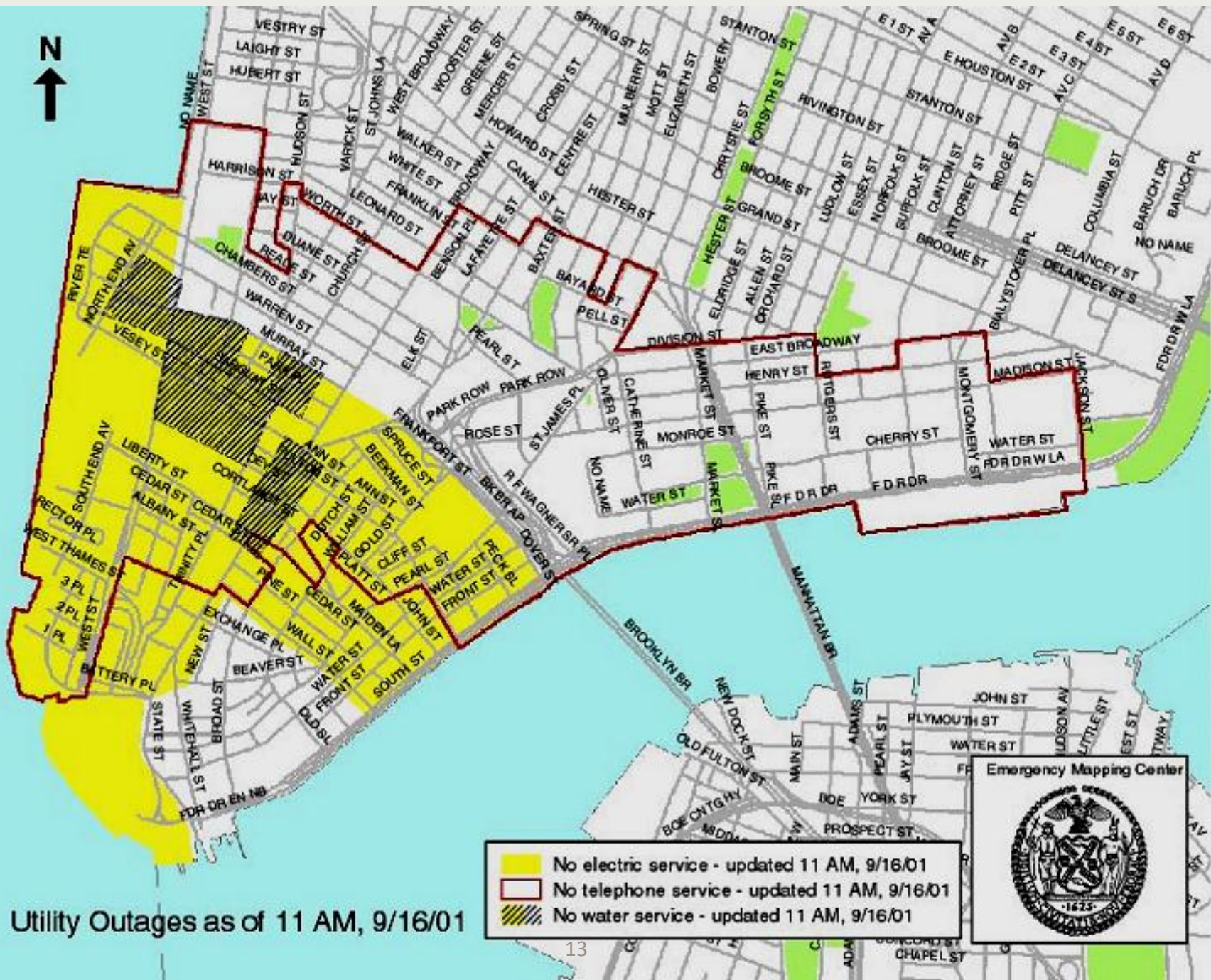
Imagery Products	File Format
Digital Orthoimagery	BIP (with associated HDR files), SID (with associated SDW files)
<p><i>Description:</i> Panchromatic (black & white) imagery captured with a digital aerial camera, 90mm focal length, 4k x 4k frame size, 8-bit radiometry, from an altitude of 5000 ft, with simultaneous airborne GPS and inertial measurement unit for exterior orientation parameters. Resulting digital orthoimagery mosaic corrected using a LIDAR "bald earth" 3d model collected July, 2000. Pixel resolution is .5 ft with approximate horizontal accuracy of +/- 2 ft. Coordinate reference is NY State Plane, Long Island zone, MAD-83, US survey feet.</p>	

[Link to FTP Instructions](#)




Imagery Products	File Format
Digital Orthoimagery	JPEG, SID (with associated SDW files)
<p><i>Description:</i> The Panchromatic (black & white) imagery was shot at</p>	

EMDC Map Request Intake and Pickup Station



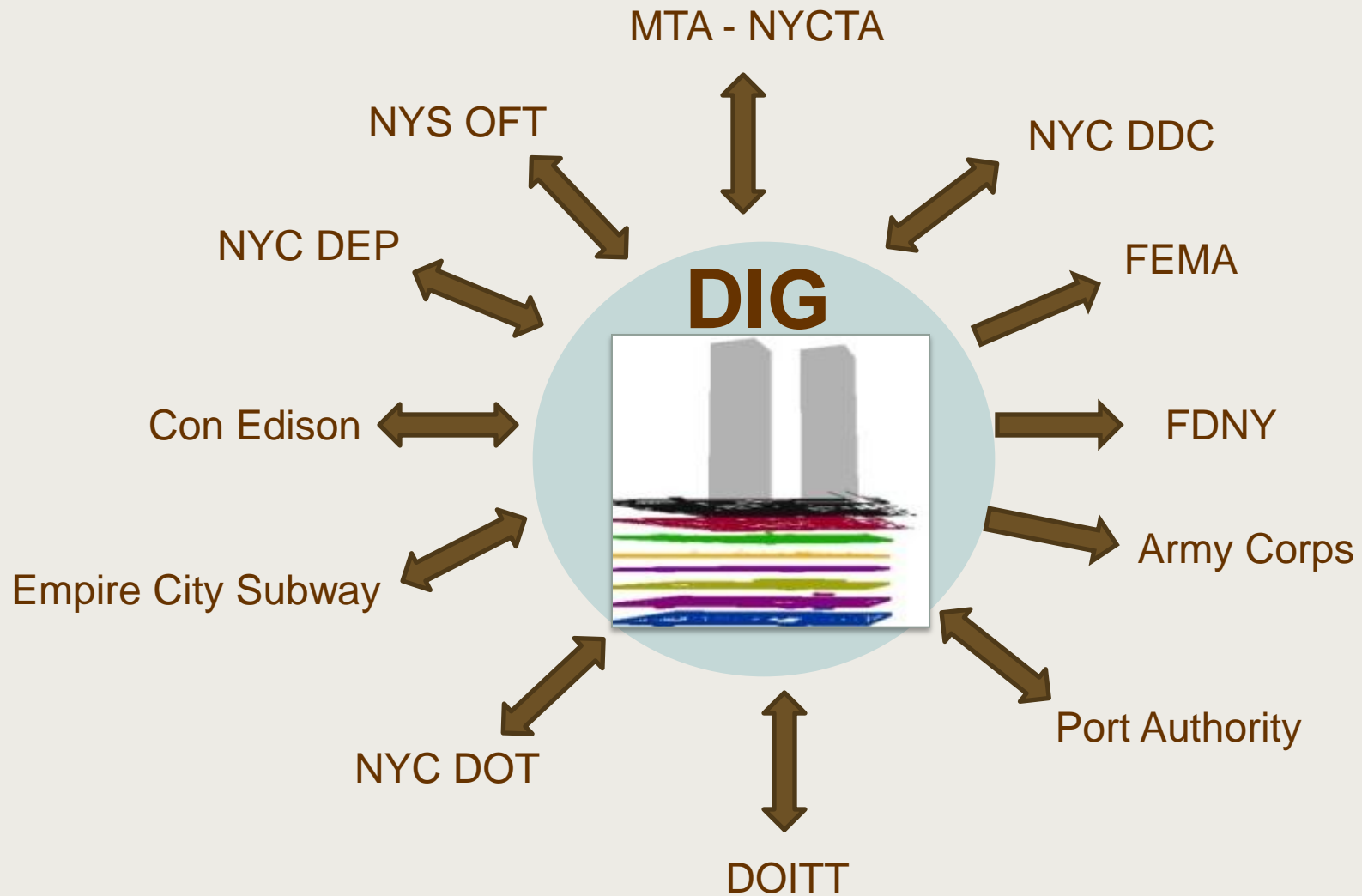


Utility Outages as of 11 AM, 9/16/01

-  No electric service - updated 11 AM, 9/16/01
-  No telephone service - updated 11 AM, 9/16/01
-  No water service - updated 11 AM, 9/16/01

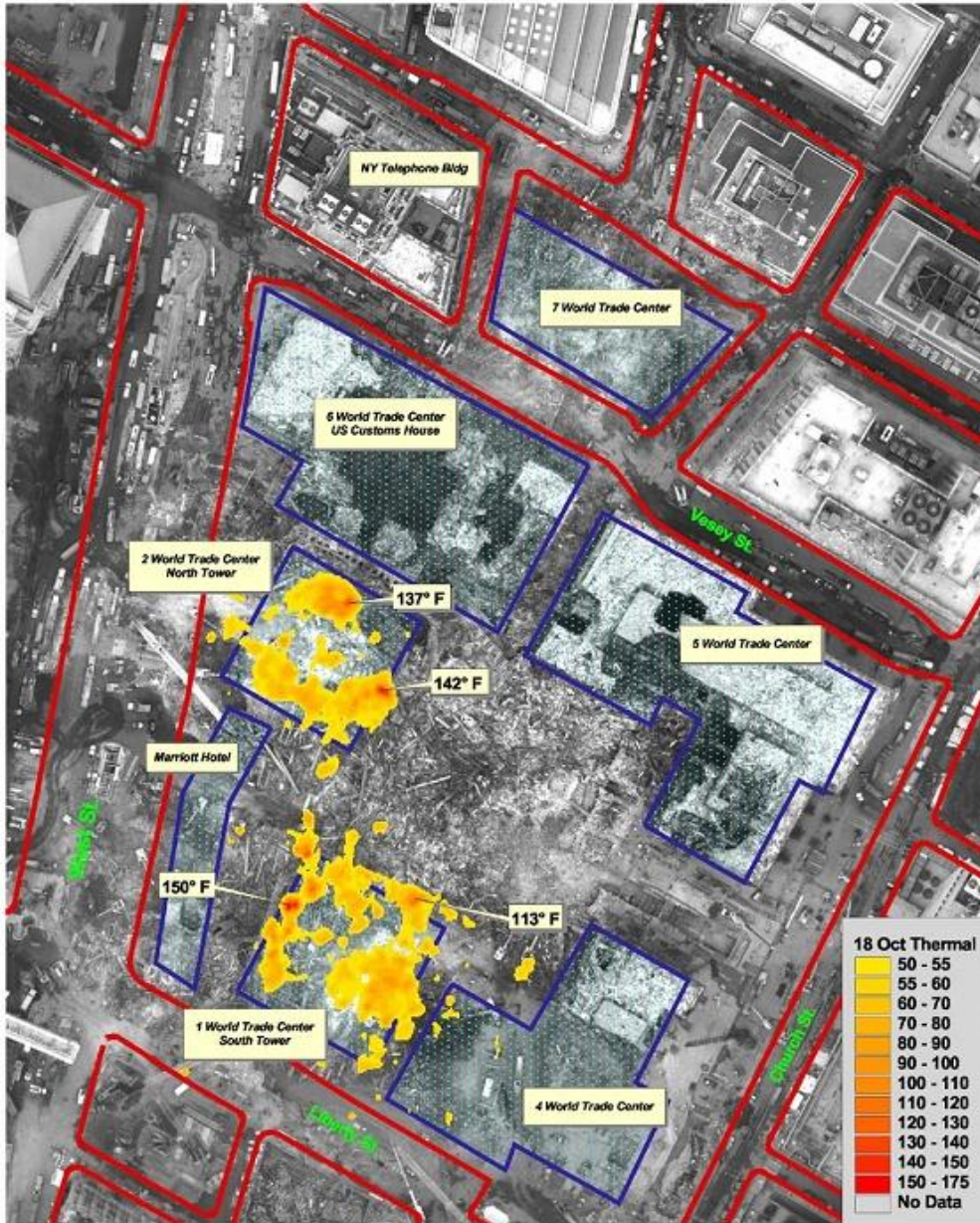


Deep Infrastructure Group (DIG)



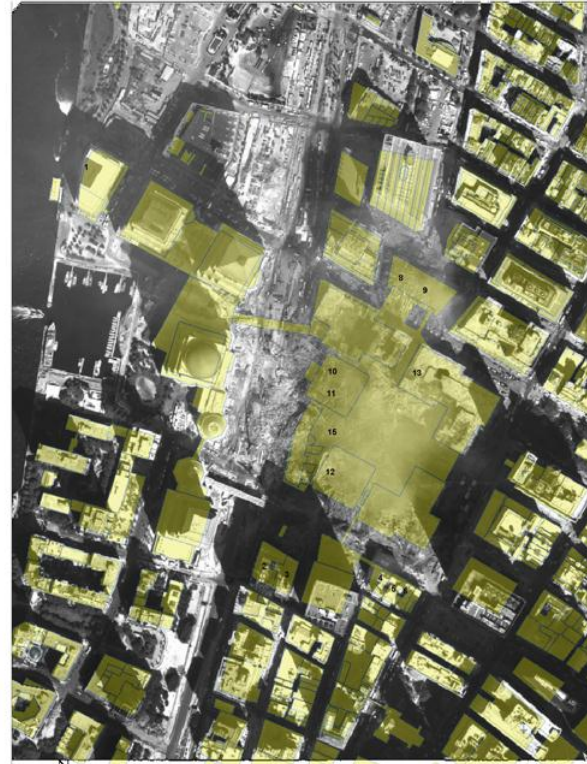
Serves as Infrastructure Data Exchange Broker

Fuel tanks + Freon + Fires = Trouble



Fuel Tanks Near the World Trade Center Within Secured Area

- | | | |
|---|--|---|
| 1) PBS# 2-601825
250 Vesey Street
400 gallons
Fuels: #1, 2, or 4
Steel Storage Tank, Above Ground | 3) PBS# 2-511536
130 Cedar Street
9,500 gallons, #5 or 6,
Underground, Vaulted Access
3,000 gallons, #1, 2, or 4
Steel Tank | 5) PBS# 2-604662
120 Liberty Street
4,000 gallons
Fuels: #1, 2, or 4
Steel Tank, Above ground |
| 2) PBS# 2-200212
90 West Street
2 x 10,000 gallons
Fuels: #5 or 6
Steel Tanks, Above Ground | 4) PBS# 2-357685
124 Liberty Street
330 gallons, Above ground, Steel tank
1,000 gallons
Below ground, Fiberglass reinforced plastic
Diesel Fuel | 6) PBS# 2-332941
114 Liberty Street
5,000 gallons
Fuels: #5 or 6
Steel Tank, Above Ground |
| | | 7) PBS# 2-258822
47 West Street
3,000 gallons
Fuels: #5 or 6
Steel Storage Tank, Above Ground |
| | | 8) PBS# 2-601553
7 World Trade Center
2 x 6,000 gallons
Diesel Fuel
Underground Storage Tank |
| | | 9) PBS# 2-602283
7 World Trade Center
2 x 11,690 gallons
Fuels: 1, 2, or 4
Fiberglass reinforced plastic tanks, Underground |
| | | 10) PBS# 2-602234
1 World Trade Center
10,000, 3 x 275, & 100 gallons
Fuels: #1, 2, or 4
Steel Storage Tank |
| | | 11) PBS# 2-293563
1 WORLD TRADE CENTER
10,000, 5,000, 1,800, & 3 x 275 gallons
Fuels: #1, 2, or 4
Above Ground, Stainless Steel Tanks |
| | | 12) PBS# 2-344737
2 World Trade Center
2 x 2,500 gallons
Fuels: #1, 2, or 4
Steel Storage Tanks, Above Ground |
| | | 13) PBS# 2-604231
5 World Trade Center
2 x 10,000 gallons
Fuels: #1, 2, or 4
Steel Storage Tanks, Above Ground, Level B2 |
| | | 14) PBS# 2-000204
River Water Pump Station
(Actual Location Unknown)
2 x 4000 gallons
Sodium Hypochlorite
Fiberglass Reinforced Plastic Tank |
| | | 15) Large Freon Tank |



Disclaimer: The City of New York does not certify the correctness of any information provided on this map and is not liable for any actions taken or not taken by any persons.

NOTE: Interpretations and clarifications can be obtained through Thomas Pleasanski at the NYDDEC WTC Operations Command Center at 518.402.3993 or 518.402.8813

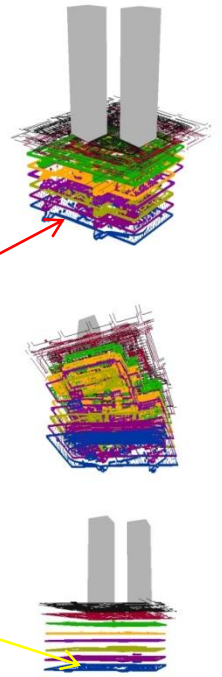
Fuel and Freon Tanks



3D Model showing the search for Freon Tanks

Fires Burning

Freon Tank location area of interest



Underground tanks held more than 200,000 pounds of freon gas

- Threat of explosion from fires
- Fear that leaks would suffocate workers



Eventually tanks were emptied and safely removed

Lessons Learned

- Spatially enabled infrastructure information is **crucial** to disaster response
- Having a **common GIS basemap** and using pre-registered data is key
- Human network: **collaboration**
- Rapid, robust, reliable **communications** and data transfer

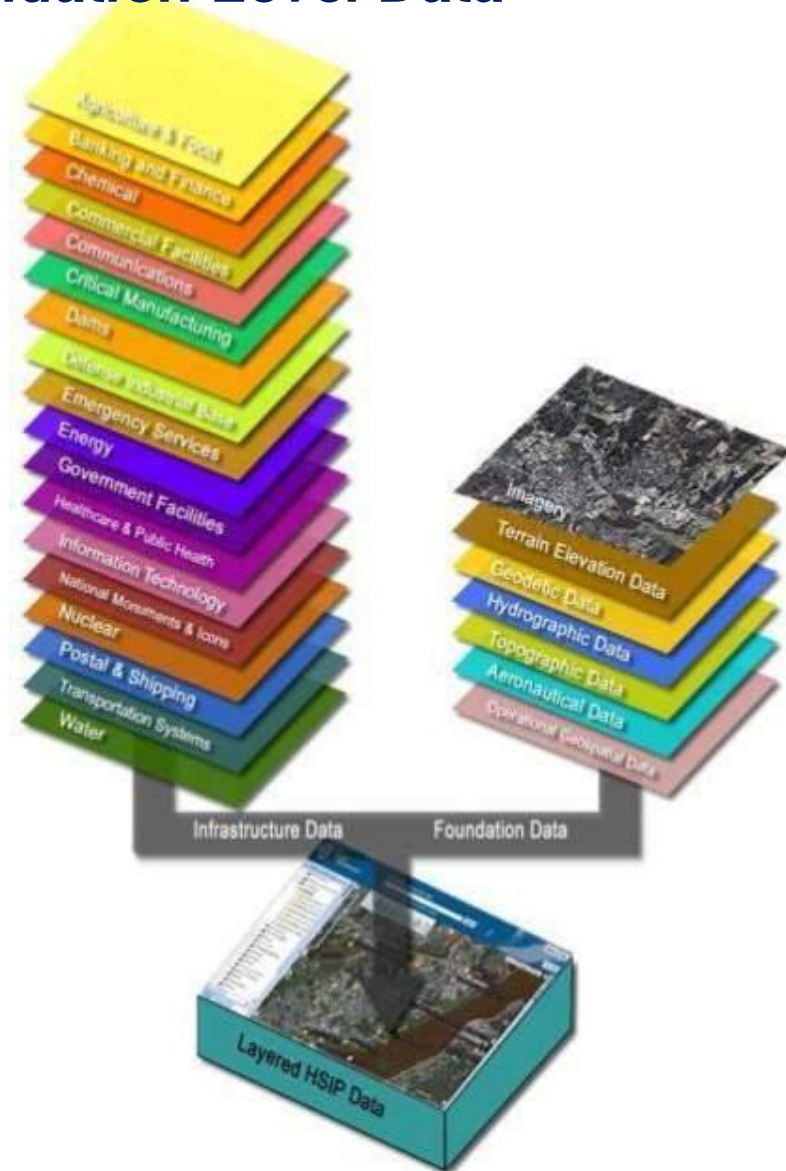
The HIFLD Working Group: February, 2002

Homeland Infrastructure Foundation Level Data

Presidential Declaration establishes 18 Critical Infrastructure categories and authorizes the collection of national infrastructure data

- Everyone Wants Situational Awareness (SA)
- Everyone Wants a Common Operational Picture (COP)

Both Require Common Foundation Data from Authoritative Sources



Homeland Infrastructure Foundation Level Data (HIFLD) Working Group

HIFLD Official Members

FEMA



NGA



DHS



DoD



USGS



Over 5,290 Contributing Partners From

14 Executive Departments, 94 Agencies and 50 States



Homeland Infrastructure Foundation
Level Data (HIFLD) Working Group

Government Data Providers

U.S. Department of Agriculture (USDA)

Forest Service

U.S. Department of Commerce (DOC)

U.S. Census Bureau

National Oceanic and Atmospheric Administration (NOAA)

U.S. Department of Defense (DoD)

National Geospatial-Intelligence Agency (NGA)

Defense Installation Spatial Data Infrastructure (DISDI)

Defense Contract Management Agency (DCMA)

U.S. Army

U.S. Army Corps of Engineers (USACE)

National Guard Bureau (NGB)

Air National Guard (ANG)

Army National Guard (ARNG)

U.S. Department of Energy (DOE)

Office of Energy Efficiency & Renewable Energy

National Renewable Energy Lab (NREL)

Office of Science

Oak Ridge National Laboratory (ORNL)

U.S. Department of Health & Human Services (HHS)

State/Local

U.S. Department of Homeland Security (DHS)

Federal Emergency Management Agency (FEMA)

U.S. Coast Guard (USCG)

U.S. Customs and Border Protection (CBP)

Office of the Border Patrol

U.S. Department of the Interior (DOI)

Bureau of Indian Affairs (BIA)

Minerals Management Service (MMS)

U.S. Fish and Wildlife Service

U.S. Geological Survey (USGS)

National Park Service

U.S. Department of Transportation (DOT)

Federal Aviation Administration (FAA)

Federal Railroad Administration (FRA)

Bureau of Transportation Statistics

U.S. Department of Veterans Affairs (VA)

U.S. Environmental Protection Agency (EPA)

U.S. General Services Administration (GSA)

U.S. Nuclear Regulatory Commission (NRC)

U.S. Postal Service (USPS)

Federal Communications Commission (FCC)

Federal Deposit Insurance Corporation (FDIC)

National Credit Union Administration (NCUA)

Non-Governmental Organizations

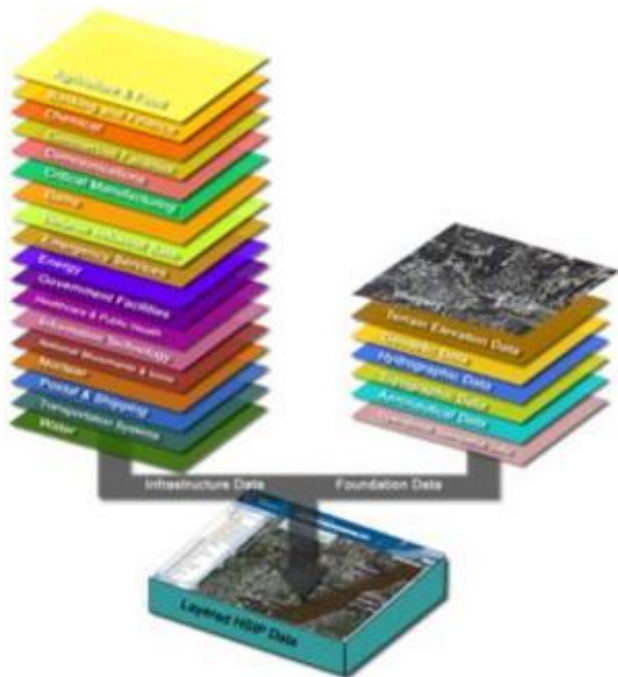
American Red Cross (ARC)

Geospatial Multi-Agency Coordination

Homeland Security Infrastructure Protection (HSIP) Data

Free to all Qualified

>500,000 Gov't workers have access



FEDERAL LEVEL
DISSEMINATION

HSIP Gold + Navteq
**475+ Infrastructure Data
Layers Nationwide!**



FEDERAL, STATE & LOCAL
LEVEL DISSEMINATION

HSIP Freedom
**260+ Infrastructure Data
Layers Nationwide!**

HSIP Data

Examples From: Emergency Services, Energy, Finance

Geodatabase Name	Feature Class	Alias	Feature	Record	Source	Publication	Access Constraints	Use Constraints
EmergencyServ	Red_Cross_Chapters	American Red Cross Chapters	Area	571	American Red Cross	Dec-11	None (Public Domain Information)	None (Public Use)
EmergencyServ	Red_Cross_Divisions	American Red Cross Divisions	Area	9	American Red Cross	Dec-11	None (Public Domain Information)	None (Public Use)
EmergencyServ	Red_Cross_Headquarters	American Red Cross Headquarters	Point	575	American Red Cross	Dec-11	None (Public Domain Information)	None (Public Use)
EmergencyServ	Red_Cross_Regions	American Red Cross Regions	Area	113	American Red Cross	Dec-11	None (Public Domain Information)	None (Public Use)
EmergencyServ	State_EOCs	State Emergency Operation Centers (EOCs)	Point	58	Federal Emergency Management Agency (FEMA)	Jan-12	None (Public Domain Information)	None (Public Use)
Energy	Alternative_Fueling_Stations	Alternative Fueling Stations	Point	4884	National Renewable Energy Labs (NREL); National Transportation Atlas Database (NTAD) 2011	Jan-11	None (Public Domain Information)	None (Public Use)
Energy	NuclearFuel	Nuclear Fuel Plant	Point	13	TechniGraphics, Inc (TGS)	Nov-09	Federal, State and Local Government and Industry Partner Access Only	For Official Use Only (FOUO); no other use constraints
Energy	Pacific Platforms	Pacific Platforms	Point	23	Bureau of Ocean Energy Management, Regulation and Enforcement	Aug-11	None (Public Domain Information)	None (Public Use)
Energy	PropaneLocations	Propane Locations	Point	47353	Department of Homeland Security (DHS)	Oct-06	Federal, State and Local Government and Industry Partner Access Only	For Official Use Only (FOUO); no other use constraints
Energy	Radiological_Assistance_Program_Regions	Radiological Assistance Program (RAP) Regions	Area	9	Department of Energy (DOE)	Feb-04	None (Public Domain Information)	None (Public Use)
Finance	Banks_Main_Offices	FDIC Insured Bank - Main Office	Point	8193	TechniGraphics, Inc (TGS)	Apr-09	None (Public Domain Information)	None (Public Use)
Finance	CreditUnionsHQ	Credit Union Headquarters	Point	18112	National Credit Union Administration	Jan-08	None (Public Domain Information)	None (Public Use)

HSIP Emergency Mgmt Data Layers

Displaying Hospitals, EOCs and Fire Stations

DHS OneView - Windows Internet Explorer
 https://gii.dhs.gov/Oneview/

DHS OneView

OneView Geospatial Information Infrastructure (GII)

Road Aerial Bird's eye Streetside

Layers Query Conus Find

Map Layers

- Education
- EmergencyServices
 - 911 Public Safety Answering Point Boundary
 - American Red Cross Chapters
 - American Red Cross Divisions
 - American Red Cross Headquarters
 - American Red Cross Regions
- Base Helipads Airports
- Communication Centers
- Emergency Medical Service
- Fire Stations
- Hurricane Evacuation Routes
- Ingestion Exp Pathway Emerg Planning Zones
- Local Emergency Operations Centers
- National Shelter System
- NDMS Federal Coordinating Centers
- Office of Bombing Prev National Capabilities Asset DB
- Plume Exposure Pathway Emerg Planning Zones
- Receiving Hospitals
- Red Cross Chapter Facility
- Rotary Wing 10 Minute Fly Circles

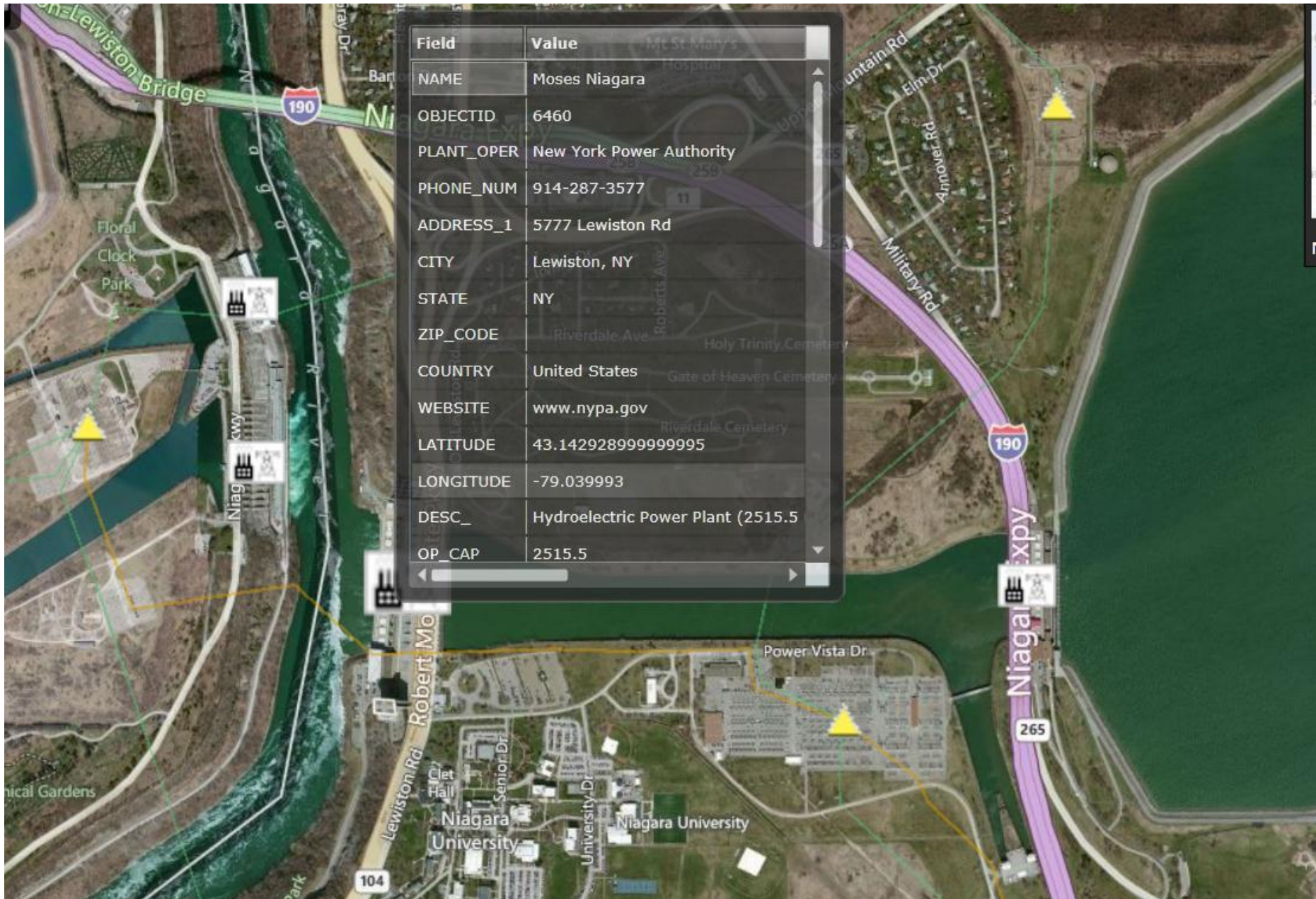
Field	Value
AMSP_ID	NY011
OBJECTID	1073
HOSP_NAM	Winthrop University Hospital
ADDRESS1	259 1st St
ADDRESS2	
CITY	Mineola
STATE	NY
ZIP	11501
PHONE_H	516-663-0333
HOSP_TYP	Adult & pediatric trauma center
TC_LEVEL	Level 1
STROKE_UNI	
BURN_UNIT	
TRANSPLANT	

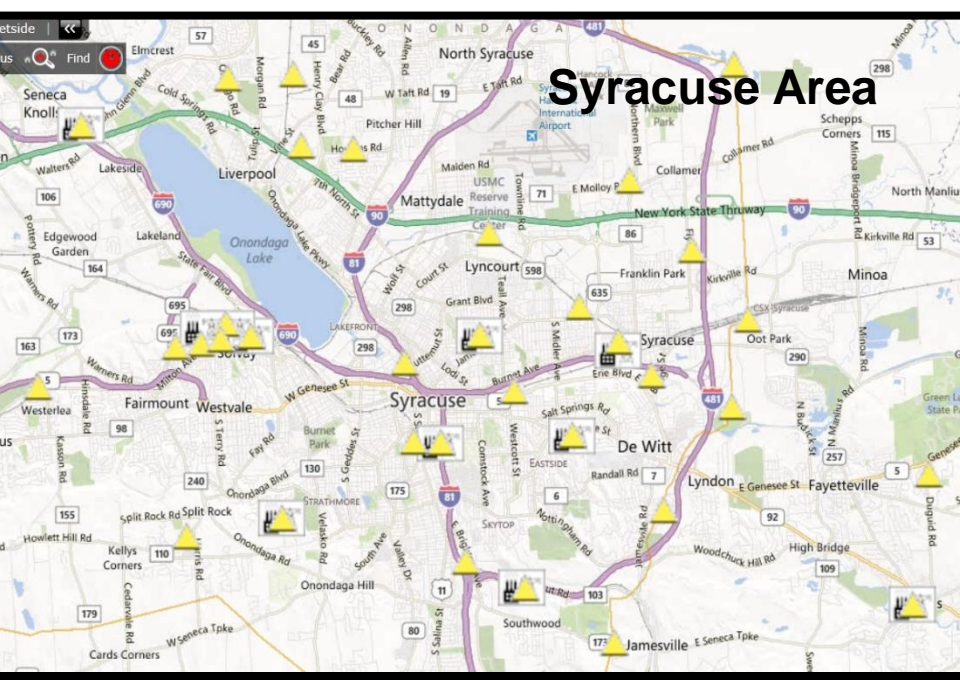
Scale 1:34204

80.7429, -73.6424 14.00

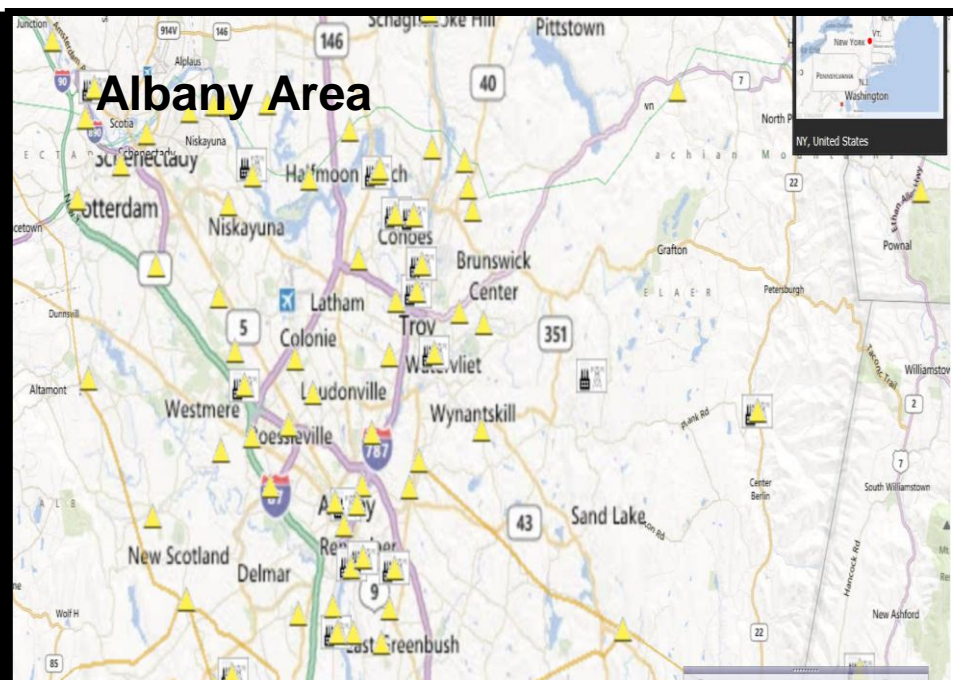
Internet | Protected Mode: On 125% 12:21 PM 1/21/2013

HSIP Gold: Niagara Falls Power Generation Complex

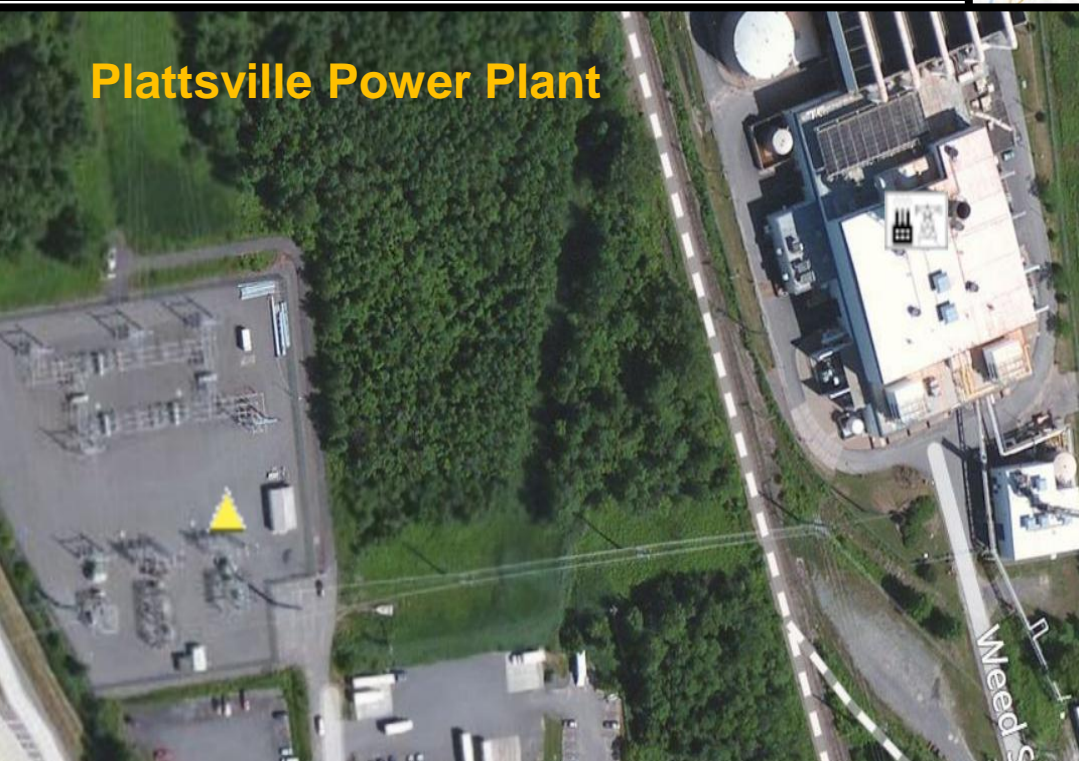




Syracuse Area



Albany Area



Plattsville Power Plant

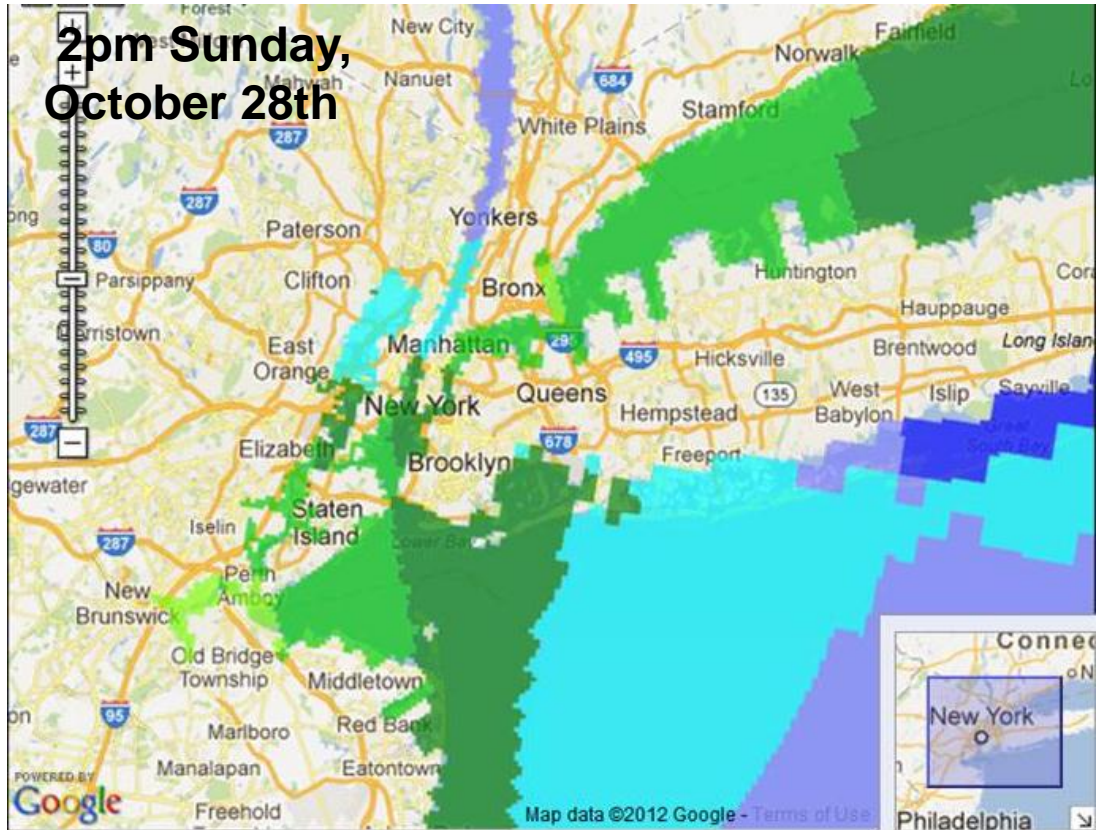


Indian Point

NOAA Predicted Storm Track and Surge Heights for Superstorm Sandy



2pm Sunday,
October 28th



Lat: 40.5848 Lon: -73.3749

Legend



Current Information:
 Center Location 27.1 N 77.1 W
 Max Sustained Wind 75 mph
 Movement N at 7 mph

Forecast Position:
 Tropical Cyclon
 Sustained Winds:
 S 39-73 mph H 7-

Watches:

Hurricane Trop. Storm

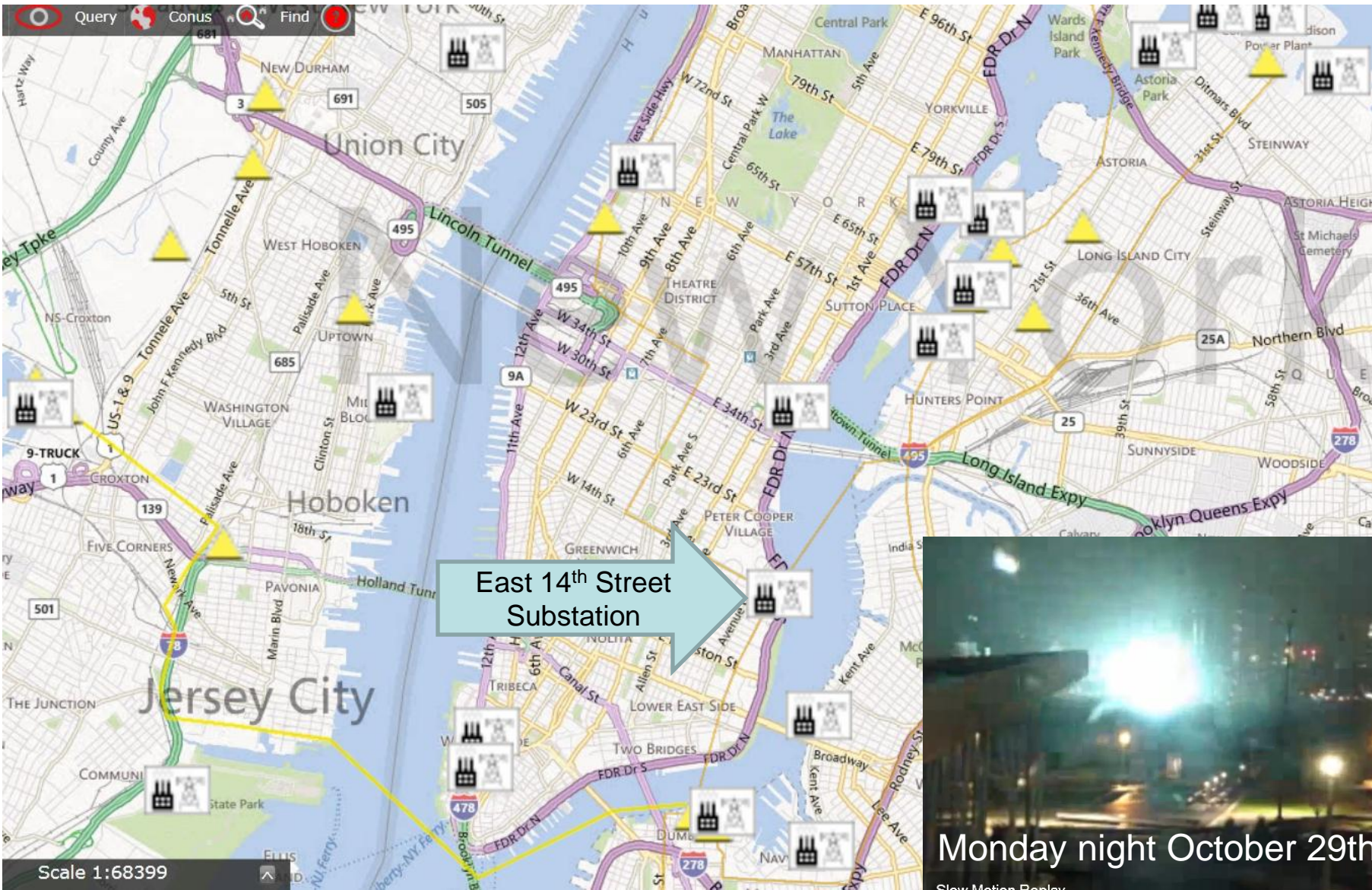
Warnings:

Hurricane

Disclaimer
 Historical Data:
 NHC this storm
 NHC all storms
 MDL

Sandy and the East 14th Street Power Plant and Substation

Lesson Learned: Electricity and water do not mix well



Monday night October 29th

Slow Motion Replay

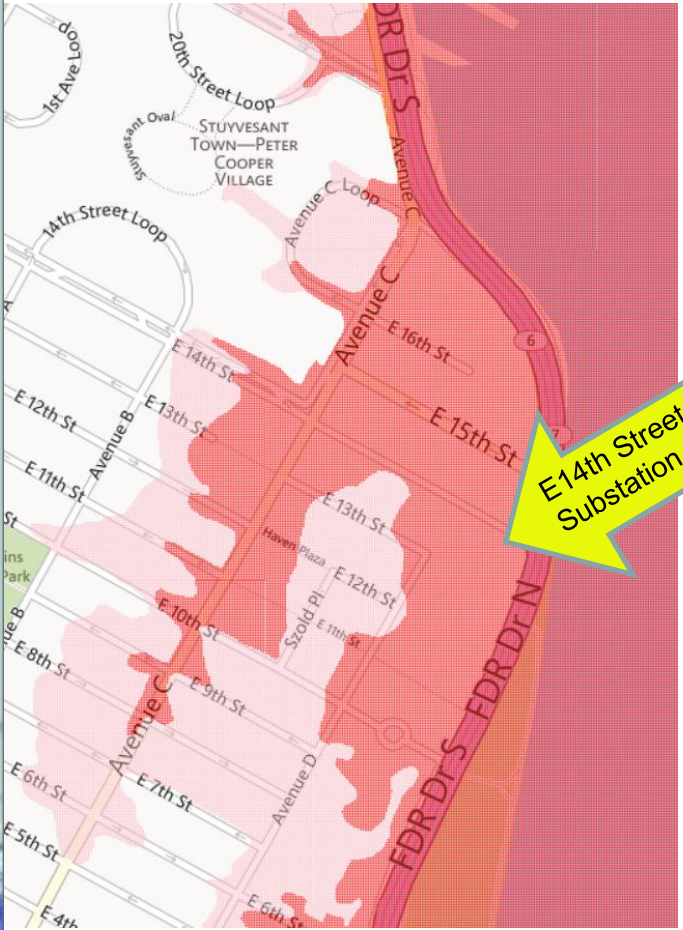
E 14th Street Power Plant & Substation



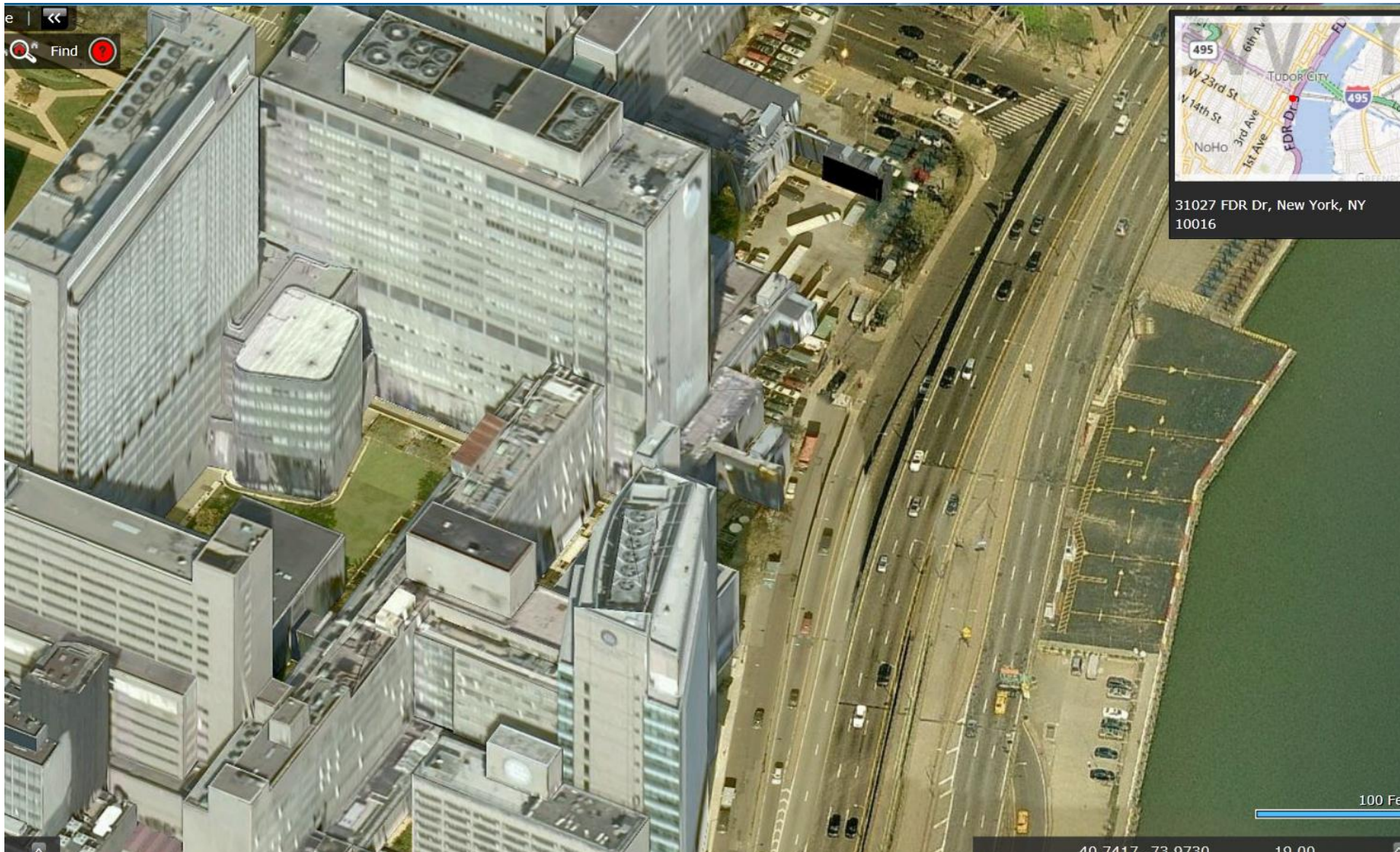
Hurricane Sandy Innundation Map



FEMA Flood Map



NYU Medical Center at E. 32nd Street



31027 FDR Dr, New York, NY
10016

100 Fe

40 7417 -73 9730 19.00

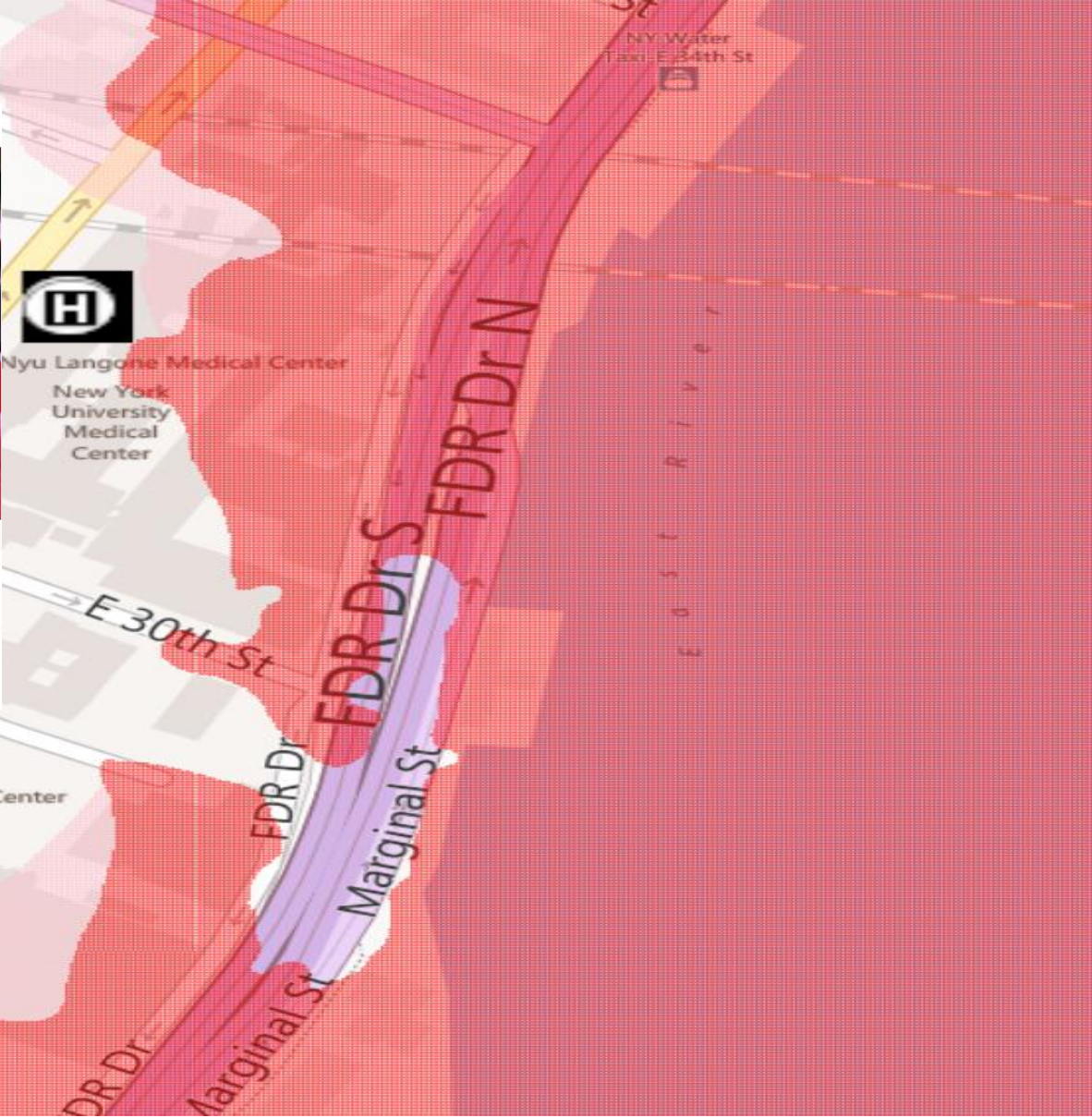
NYU Medical Center/Bellevue Hospital and Predicted Flood Zone



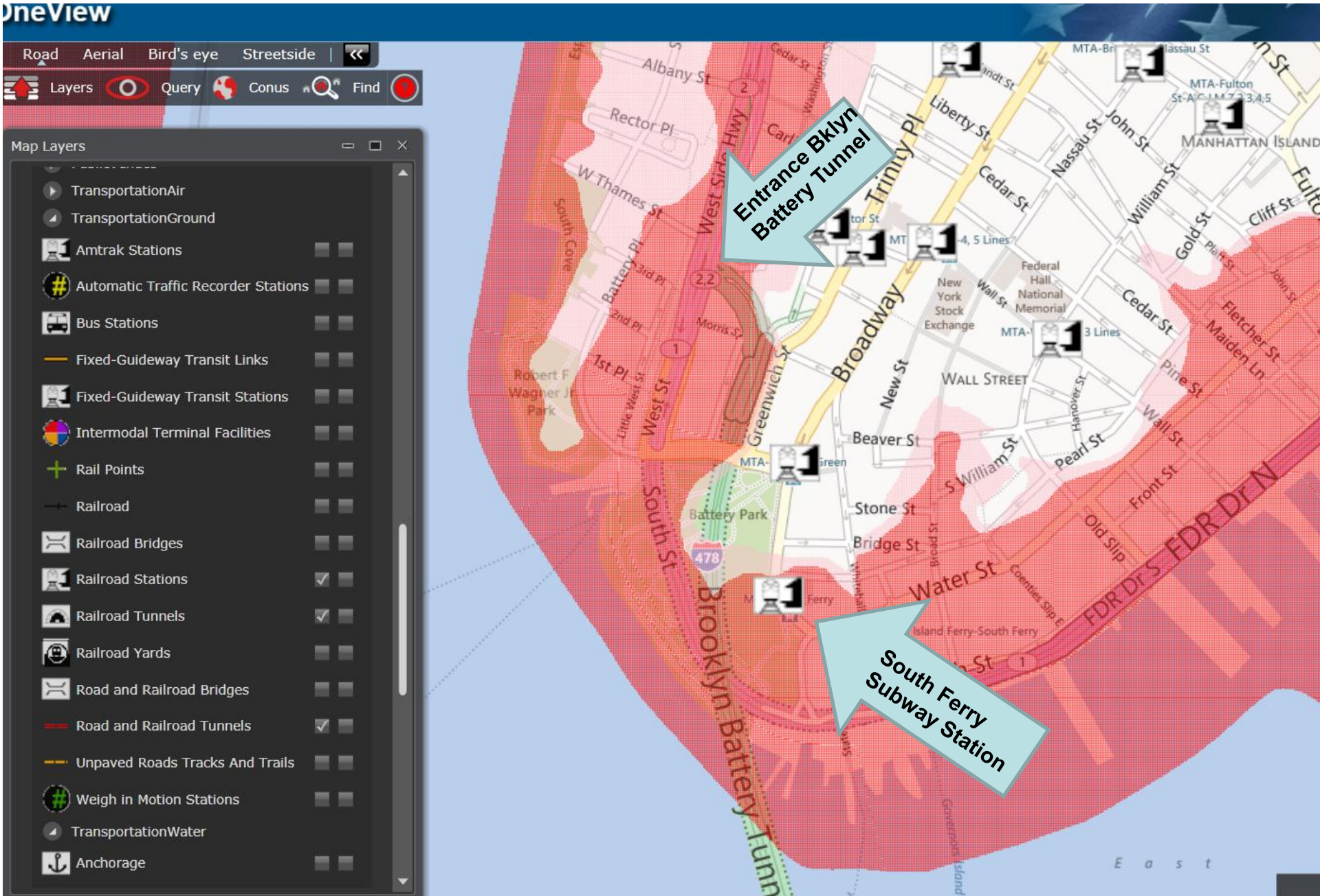
Superstorm Sandy: NYU Hospital Evacuated in New York





By RICHARD ESPOSITO and DAN CHILDS (@DanChildsABC)
Oct. 30, 2012

Paramedics and other medical workers began to evacuate patients from New York University Langone Medical Center due to a power outage caused by Tropical Storm Sandy, followed by a failure of backup generators at the hospital, New York City officials said Monday night.



Lower Manhattan Flood map and transportation features



Data	What is it?	Who can access it?	How can I access it?	What do I need?
 <p>HSIP Gold</p> 	<p>A compilation of Common Operational Geospatially Enabled Base-Line Data to support to Homeland Security, Homeland Defense and National Preparedness – Prevention, Protection, Mitigation, Response and Recovery mission communities.</p> <p>Data is U//FOUO.</p>	<p>Federal Government Agencies.</p> <hr/> <p>State and Local Government Agencies sponsored by FEMA with a Presidential Disaster or Emergency Declaration.</p> <hr/> <p>All Federal, State, Local, Tribal and Territorial Government Agencies and Private Sector Partners can view when served by a password protected Federal System.</p>	<p>Request DVD set on HIFLD site at https://www.hifldwg.org/hsip-overview.</p> <p>Requests handled by NGA.</p> <p>Data is in vector format, organized in geodatabases.</p> <hr/> <p>Access via Map Services on the DHS Geospatial Information Infrastructure (GII) at https://gii.dhs.gov/</p> <p>“GII Services” for WMS, REST, SOAP, API or KML.</p> <p>“DHS Earth” for Google Earth KML file.</p> <p>“OneView” for web-based analytic viewer.</p>	<p>HIFLD account. http://www.hifldwg.org/</p> <p><i>(Government sponsor information is required for anyone who is not a federal, state or local government employee.)</i></p> <hr/> <p>HIFLD account. http://www.hifldwg.org/</p> <p>FEMA Sponsor</p> <p>Presidential Declaration # http://www.fema.gov/news/disasters.fema</p> <hr/> <p>HSIN account. https://government.hsin.gov/default.aspx</p> <p><i>(No specific Community of Interest (COI) required).</i></p> <p><i>(Government sponsor information is required for anyone who is not a federal, state or local government employee.)</i></p>
<p>HSIP Freedom</p>  <p>https://www.hsin.gov</p>	<p>Subset of HSIP Gold data that is license-free and does not include the commodity data.</p> <p>Data is U//FOUO.</p>	<p>Federal, State, Local, Tribal and Territorial Government Agencies and Private Sector Partners.</p>	<p>Download from HSIN GIS Portal - HSIP Freedom Site (instructions online)</p> <p>Requests handled by DHS.</p> <p>Data is in vector format, organized in geodatabases.</p>	<p>HSIN account with membership to the GIS Community of Interest (COI). https://government.hsin.gov/sites/gis/RDC.aspx</p> <p><i>(Government sponsor information is required for anyone who is not a federal, state or local government employee.)</i></p>
<p>HSIP NAVTEQ State Release</p> 	<p>The HSIP-NAVTEQ data uplifted by NGA includes street data, points of interest data, and route analysis.</p> <p>Data is U//FOUO.</p>	<p>State Fusion Centers, State Emergency Operation Centers (EOC), State GIS Coordinators, and State Emergency Management Coordinators.</p>	<p>Request DVD set on HIFLD site at https://www.hifldwg.org/navteq</p> <p>Data is in Smart Data Compression (SDC) format.</p>	<p>HIFLD account. http://www.hifldwg.org/</p>

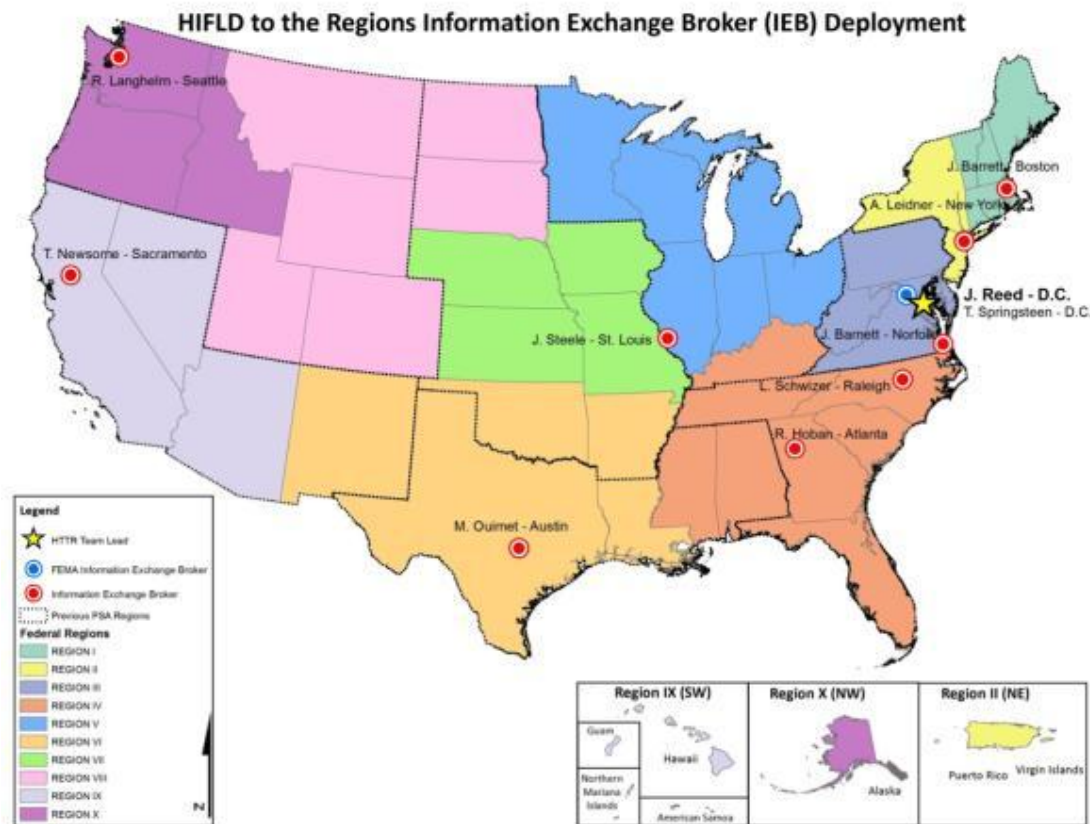
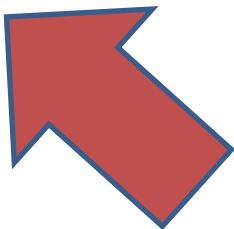
HIFLD to the Regions (HTTR)

Information Exchange Brokers (IEB)

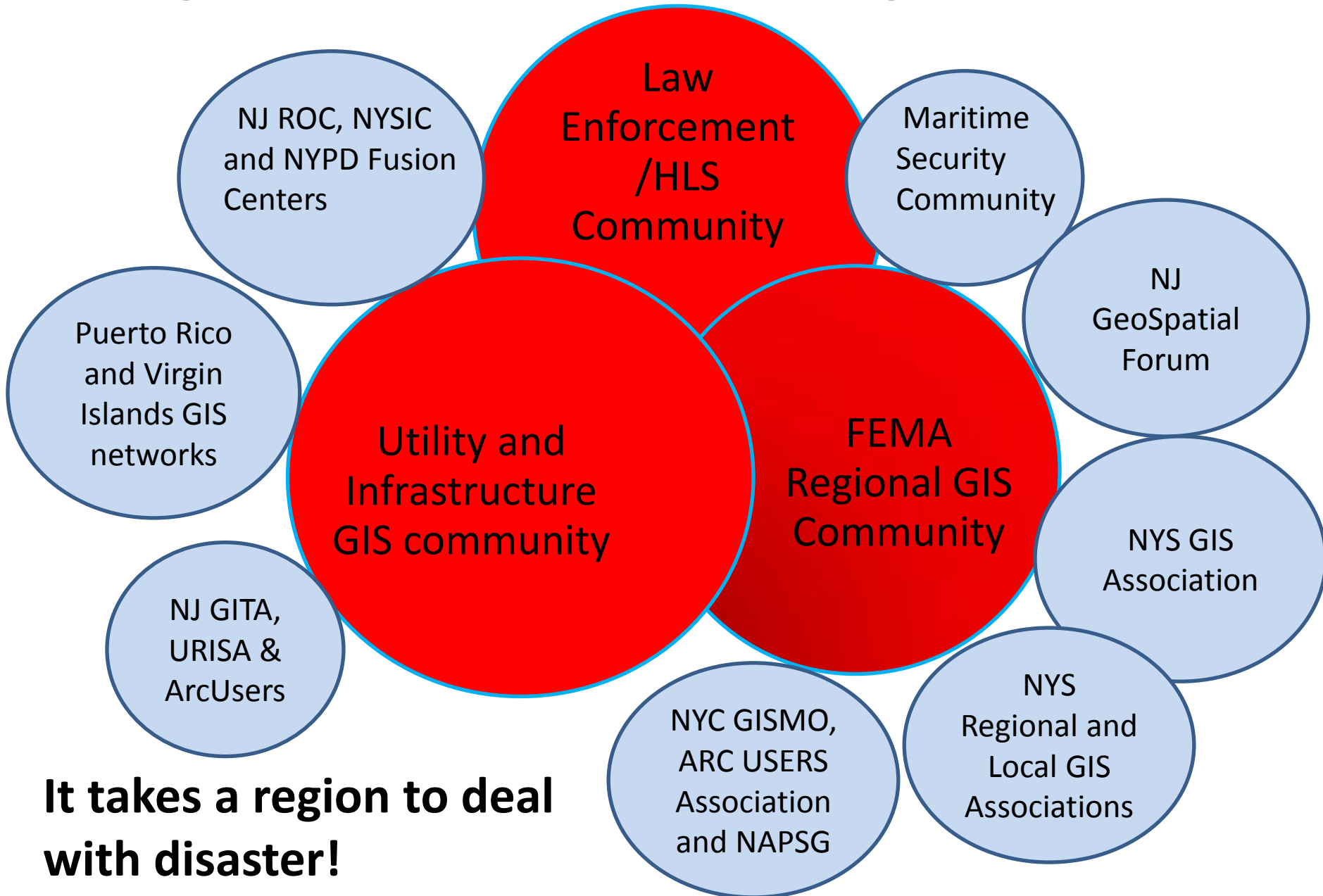
Purpose: Strengthen federal, state, local government and private sector partnerships to enhance regional preparedness and response

Roles and Responsibilities:

- Share best practices and lessons learned
- Support special events like Superbowls and Presidential Inaugurals
- **Help distribute HSIP Gold and Freedom databases**



Regional GIS Networking Structure



It takes a region to deal with disaster!

Superstorm Sandy

The Importance of GIS Networking



Hurricane Sandy
 Friday October 26, 2012
 2 PM EDT Intermediate Advisory 17A
 NWS National Hurricane Center

Current Information: ●
 Center Location 27.1 N 77.1 W
 Max Sustained Wind 75 mph
 Movement N at 7 mph

Forecast Positions:
 ● Tropical Cyclone ○ Post-Tropical
 Sustained Winds: D < 39 mph
 S 39-73 mph H 74-110 mph M > 110mph

Potential Track Area:
 Day 1-3 Day 4-5

Watches:
 Hurricane Trop.Storm

Warnings:
 Hurricane Trop.Storm

Hurricane Sandy GIS Working Group: FEMA & HIFLD

GIS is the info, intel and analysis backbone of any disaster response

1	Barlow, Roger	USGS	rbarlow@usgs.gov	703-648-5189; 410-2600	01	Morris, Jennifer	FEMA R2/NY State EOC	jennifer.morris@fema.dhs.gov	571-318-1018
2	Bausch, Douglas	FEMA	douglas.bausch@fema.dhs.gov		51	Mumford, Kathleen	US Army North, San Antonio	kathleen.mumford.civ@mail.mil	210-221-9142
3	Anest, Stephen	Federal Protective Services	stephen.anest@dhs.gov	212-264-3027	52	Neidig, Craig A.	USGS	cneidig@usgs.gov	304-347-5130 x237
4	Balakrishnapillai, Santhosh	Suffolk County FRES	santhosh@suffolkcountyny.gov	631-852-4851	53	Newman, Glen	NJ Transit	gnewman@njtransit.com	973-491-7849
5	Baucom, Kathy	NGA	katherine.p.baucom@nga.mil		54	O'Brien, Dan	NYS DHSES EOC GIS	dobrien@dhses.nyu.gov	518-292-2468
6	Bethel, Glen	FEMA	Glenn.Bethel@fas.usda.gov		55	O'Brien, Julia	FEMA Region II	julia.o'brien@fema.dhs.gov	917-853-3618
7	Bishop, Beth, Lt. Col.	NYS National Guard	beth.bishop@us.army.mil	518-786-4366	56	Ohlson, Kristen	NYC Infragard/FBI	kirsten.ohlson@ic.fbi.gov	
8	Callahan, Patrick	FEMA	patrick.callahan@fema.dhs.gov		57	Opalack, Thomas (Major)	CAP Liaison, FEMA R2	opalack@aol.com	908-256-2825
9	Chan, Terri	FEMA Region II	huiyan.chan@fema.dhs.gov	202-590-8965	58	O'Sterman, Kurt	DHSES NYS IP	kosterman@dhses.nyu.gov	518-292-1188
10	Christiano, Mark	Nat'l Park Service, Gateway Park	mark_christiano@nps.gov	203-536-0862	59	Parker, Deborah	Westchester County GIS	dape@westchestergov.com	
11	Colwell, Jonathan	FEMA Nassau EOC	jonathan.colwell@dhs.gov	760-265-2431	60	Peterson, Kevin	DHS IP PSCD	kevin.peterson1@hq.dhs.gov	917-710-3642
12	Cornell, Ian	FBI NYC Office	ian.cornell@ic.fbi.gov	646-341-0548	61	Pokrzywka, Dennis	NYS DEC	dmpokrzy@gw.dec.state.ny.us	518-469-1278
13	Costello, Scott	NJ DHSP	scott.costello@ohsp.state.nj.us	609-588-2217	62	Ponte, Tom	FEMA GIS/GIU Specialist	tom.ponte@fema.dhs.gov	541-419-2113
14	Daly, Jim	Suffolk County IT Dept	james.daly@suffolkcountyny.gov	631-853-6045	63	Postel, Michael	Suffolk County FRES	michael.postel@suffolkcountyny.gov	631-852-4851
15	Darby, Christopher	City of Newark	darbyc@ci.newark.nj.us	973-733-3832	64	Poulsen, Erika	Port Authority NYNJ	epoulsen@panynj.gov	201-595-4689
16	Donovan, Sean	FEMA IMT to NYS EOC	sean.donovan@fema.dhs.gov	213-458-1501	65	Quodmine, Richard D.	NYS DOT	rich.quodmine@dot.ny.gov	518-457-8346
17	DosSantos, Jose	FEMA Region II	jose.dossantos@fema.dhs.gov	212-680-3652	66	Rafferty, Tom	NJ State Police ROI/EOC	rafferty.tom@gw.njsp.org	609-963-6955
18	Duffy, Brendan	Long Island Railroad	bdduffy@lirr.org	718-558-3730	67	Rainey, Steven	Newark NJ	rainey@ci.newark.nj.us	
19	Ed Eisenstein	Nassau County IT	eeisenstein@nassaucountyny.gov	516-448-7072	68	Raymond, Mary	DHS IP PSCD	marv.raymond@hq.dhs.gov	917-207-7960
20	Faison, Kendrick	FEMA GIUL, Nat'l IMAT - Blue	kendrick.faison@dhs.gov	202-304-7272	69	Reilly, Colin	NYC DOI/T GIS Director	creilly@doitt.nyc.gov	718-403-8394
21	Faught, Ray	NYS DHSES GIS Nassau EOC	rfaught@dhses.nyu.gov	518-522-5278	70	Reiser, John	NJ National Guard	reiser@rowan.edu	856-256-4817
22	Fiumano, Frank	USCG	frank.fiumano@uscg.mil	718-354-4061	71	Richardson, Harold	DoD JSLCC	harold.richardson@usa.com	
23	Freehafer, Douglas	USGS NY Water Science Center	dfreehaf@usgs.gov	518-285-5620	72	Rogers, Williams	USACE	william.a.rogers@usace.army.mil	
24	Galloway, Stewart	NYS National Guard	stewart.galloway@us.army.mil	518-786-4550	73	Rowan, Andrew T.	OIT NJ GIS	andrew.rowan@oit.state.nj.us	609-633-0276
25	Gerkin, Hayley	NGA Support Team for FBI NYC O	hayley.gerkin@ic.fbi.gov	212-384-3577	74	Ruhren, Tim	NYS GIS	truhren@dhses.nyu.gov	
26	Hicks, Patty	NJ State Police ROI/EOC	LPPHICKSP@gw.njsp.org	609-963-6955	75	Ruhren, Tim	NYS DHSES GIS Nassau EOC	truhren@dhses.nyu.gov	
27	Holland, Ben	NJ State Police ROI/EOC Fusion Center	holland.ben@geoeye.com	609-963-6900 x6252	76	Schauffler, Rick	Federal Fish and Wildlife Service	rick_schauffler@fws.gov	
28	Hughes, Cody	FEMA Suffolk GIS POC	cody.hughes@fema.dhs.gov	425-420-6195	77	Schuetzd, Douglas	Rockland County	schuetzd@co.rockland.ny.us	845-364-3421
29	Hunt, Kevin	GIS Mgr, NYS DOT	kevin.hunt@dot.ny.gov	518-485-7152	78	Seirup, Lynn	NYC OEM	lseirup@oem.nyc.gov	718-422-8813
30	Ilij, Tota	Westchester County GIS	ial2@westchestergov.com		79	Shevlin, Robert	NYCTA	robert.shevlin@nycct.com	646-252-8682
31	Johnson, William	DHSES NYS GIS	wjohnson@dhses.nyu.gov	518-242-5032	80	Shumon, Brian	FEMA Region II	brian.shumon@fema.dhs.gov	
32	Jones, Brenda	USGS IRSCC	bkjones@usgs.gov	605.594.6503	81	Slevin, Jim	Nassau County GIS	jslevin@nassaucountyny.gov	516-571-6609
33	Kim, Pyung Ho	LIRR	phkim@lirr.org		82	Smith, Grace J.	EPA US Region 2	smith.grace@epa.gov	212-637-3589
34	King, David, LTC	DoD JSLCC	david.king4@us.army.mil		83	Soucie, Eric	FEMA in NJ ROI/EOC Parking Lot	eric.soucie@fema.dhs.gov	202-604-1087
35	Kotapish, Richard	Ohio IMT at Suffolk EOC	dick.kotapish@lakecountvohio.gov	440-487-6700	84	Spall, Michael	Con Edison	spallm@coned.com	212-460-5893
36	Kovacs, Steve	NJ National Guard	steve.kovacs@us.army.mil	609-562-0060	85	Springsteen, Thomas	HIFLD/FEMA Liaison	springsteen_thomas@bah.com	202-731-7649
37	Kreyer, Mark	DHS IP PSCD	mark.kreyer@hq.dhs.gov	716-983-8294	86	Stenson, Albert	DHS IP PSCD	albert.stenson@dhs.gov	518-427-3158
38	Leasure, Ashley	DHS IP PSCD	Leasure_Ashley@bah.com	202-617-1263	87	Stockstill, Laura	Regional CPT	lstockstill@regionalcatplanning.org	646-215-6562
39	Leidner, Alan	DHS IPI/HIFLD	leidner_alan@bah.com	212-551-6416	88	Stokes, Jim	GeoEye (supporting NJSP)	stokes.jim@geoeye.com	
40	Lopez, Rudy	NYC Planning Department	lopez@planning.nyc.gov		89	Tadrick, Joe	DHS IP PSCD	joe.tadrick@hq.dhs.gov	973-902-4567
41	Lowe, Jules	MTA	jloweff@mtapd.org		90	Thomas, George	NGA	george.j.thomas@nga.mil	
42	Lynch, Connor	Westchester County GIS	ccl3@westchestergov.com		91	Tiao, Andy	Con Edison	tiao@coned.com	212-460-5893
43	Mallamo, Aidan	Huntington, LI	amallamo@huntingtonny.gov	631-271-2156	92	Timander, Linda	EPA US Region 2	timander.linda@epa.gov	212-637-3596
44	McBride, William	NJ National Guard	william.mcbride@njdmaya.state.nj.us	609-530-7136	93	Toala, Julio	DoD JSLCC	julio.m.toala@mail.mil	210-264-7430
45	McConnell, James	OEM NYC GIS	jmccConnell@oem.nyc.gov	718-422-4812	94	Wear, Sam	Westchester County GIS	stwl1@westchestergov.com	914-995-3047
46	McDevitt, Stephen J.	USACE	stephen.j.mcdevitt@usace.army.mil	917-790-8719	95	Westfall, Frank	DHS IP PSCD	franklin.westfall@dhs.gov	973-634-6931
47	McHugh, Dan	NYCTA	daniel.mchugh@nycct.com	646-252-8660	96	Winters, Frank	NYS DHSES GIS	fwinters@dhses.nyu.gov	518-242-5036
48	Melsek, Rodney	FEMA	rodnev.melsek@fema.dhs.gov		97	Witcoski, Jon	DHS IP PSCD	jonathan.witcoski@associates.hq.dhs.gov	570-582-3933
49	Morris, Dale	Erie County/Bufalo/Niagara	dale.morris@erie.gov	716-858-7422	98	Worden, Michael	NYS Dept of Public Service	michael.worden@dps.ny.gov	
50	Morris, Jennifer	FEMA R2/NY State EOC	jennifer.morris@fema.dhs.gov	571-318-1018	99	Workman, Nate	FEMA NRCC GISUL	fema-nrcc-gisul@fema.dhs.gov	202-512-8020
51	Mumford, Kathleen	US Army North, San Antonio	kathleen.m.mumford.civ@mail.mil	210-221-9142	00	Wright, Brian K.	DHSES NYS IP	bwright@dhses.nyu.gov	518-457-8495
52	Neidig, Craig A.	USGS	cneidig@usgs.gov	304-347-5130 x237	01	Zumstein, Christian	DHS IP PSCD RGA	leif.zumstein@associates.hq.dhs.gov	703-235-9469

Key state, local and federal contacts assembled by EOC to support Hurricane Sandy Mobilization and Response

Schuetz, Douglas	Rockland County	schuetzd@co.rockland.ny.us	845-364-3421	Rockland EOC	Kendrick Faison, Julia O'Brien
Wear, Sam	Westchester County GIS	stw1@westchestergov.com	914-995-3047	Westchester EOC	Kendrick Faison, Julia O'Brien
Costello, Scott	NJ OHSP	scott.costello@ohsp.state.nj.us	609-588-2217	NJ HLS	Eric Soucie
Rowan, Andrew T.	OIT NJ GIS	andrew.rowan@oit.state.nj.us	609-633-0276	NJ OIT	Eric Soucie
Newman, Glen	NJ Transit	gnewman@njtransit.com	973-491-7849	NJ Transit	Eric Soucie
Rafferty, Tom	NJ State Police ROIC/EOC	rafferty.tom@gw.njsp.org	609-963-6955	NJ ROIC	Eric Soucie
Hicks, Patty	NJ State Police ROIC/EOC	LPPHICKSP@gw.njsp.org	609-963-6955	NJ ROIC	Eric Soucie
Holland, Ben	NJ State Police/ROIC Fusion C	holland.ben@geoeye.com	609-963-6900 x6252	NJ ROIC Fusion Center	Eric Soucie
Hunt, Kevin	GIS Mgr, NYS DOT	kevin.hunt@dot.ny.gov	518-485-7152	NYS DOT	Kendrick Faison, Julia O'Brien
Winters, Frank	NYS DHSES GIS	fwinters@dhSES.ny.gov	518-242-5036	NYC Office DHSES	Kendrick Faison, Julia O'Brien
Johnson, William	DHSES NYS GIS	wjohnson@dhSES.ny.gov	518-242-5032	NYS EOC	Kendrick Faison, Julia O'Brien
O'Brien, Dan	NYS DHSES EOC GIS	dobrien@dhSES.ny.gov	518-292-2468	NYS EOC	Kendrick Faison, Julia O'Brien
McConnell, James	OEM NYC GIS	jmcconnell@oem.nyc.gov	718-422-4812	NYC EOC	Kendrick Faison, Julia O'Brien
Seirup, Lynn	NYC OEM	lseirup@oem.nyc.gov	718-422-8813	NYC EOC	Kendrick Faison, Julia O'Brien
Reilly, Colin	NYC DOITT GIS Director	creilly@doitt.nyc.gov	718-403-8394	NYC DOITT	Kendrick Faison, Julia O'Brien
Poulsen, Erika	Port Authority NYNJ	epoulsen@panynj.gov	201-595-4689	Port Authority	Kendrick Faison, Julia O'Brien
<u>FEMA Contacts</u>					
O'Brien, Julia	FEMA Region II	julia.o'brien@fema.dhs.gov	917-853-3618		
Faison, Kendrick	FEMA GIUL, Nat'l IMAT - Blue	kendrick.faison@dhs.gov	202-304-7272		
Soucie, Eric	FEMA in NJ ROIC Parking Lot	eric.soucie@fema.dhs.gov	202-604-1087		
Hughes, Cody	FEMA Suffolk GIS POC	cody.hughes@fema.dhs.gov	425-420-6195		
Colwell, Jonathan	FEMA Nassau GIS POC	jonathan.colwell@dhs.gov	518-337-4094	760-265-2431	

HIFLD Website

Find Out Details About HSIP Freedom



Alan Leidner

Home > HSIP >

Homeland Security Infrastructure Program (HSIP) Freedom

HSIP Freedom is a functional program which promises to provide more useful critical infrastructure data to a far greater number of Homeland Security customers and in a timelier fashion than ever before. Thanks to the cooperation of various agencies at all levels of government the HSIP Freedom direction has become a significant information sharing program that will continue to expand and grow into the future.

HSIP Freedom Access Information

1. Visit the HSIN Geospatial Information Systems (GIS) Portal* (See [HSIN](#) Credential Request directions located at bottom of this page)

*Access to HSIP Freedom is updated once a week on Monday. If you have just received access to the HSIN Geospatial Information Systems (GIS) COI, please return the following Monday to download HSIP Freedom.

2. Click on the "HSIP Freedom Data" Link on the bottom right portion of the HSIN homepage under the "Links" Section.
3. Username: HSIN Email Address (lowercase), Password: Last name (lowercase)

Questions on HSIP Freedom can be e-mailed to the DHS Office of Infrastructure Protection (IP) Infrastructure Information Collection Division (IICD) at HSIPFreedomHelp@hq.dhs.gov.

Supporting Documentation

- [HSIP Freedom 2012 Data List](#)
- [HSIP Freedom 2012 Read Me Document](#)
- [HSIP Freedom 2012 FAQ](#)
- [HSIP Freedom 2012 Release Notes](#)

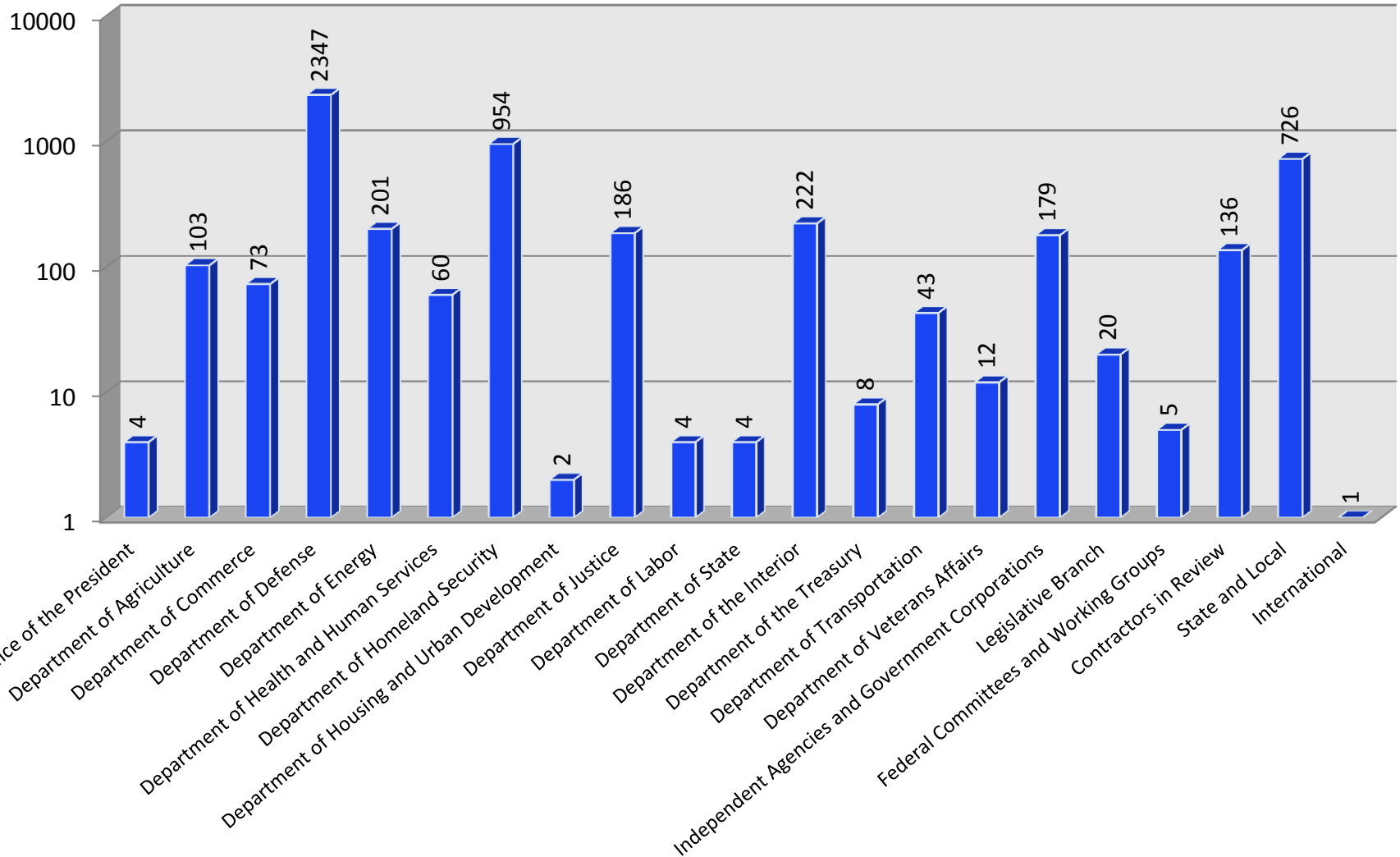
HSIP Overview Video



- My Account
- Events
 - HIFLD Meetings
 - Member Participation at Other Meetings
 - Meeting Registration
 - Shopping Cart
- Interagency Coordination Teams
 - Data Requirements
 - Technology
 - Process and Standards
- HSIP
 - My HSIP Requests
 - HSIP Gold
 - Data Request
 - [HSIP Freedom](#)
 - HSIP - NAVTEQ State Release
 - Submit HSIP Gold / Freedom Feedback
- In The News
 - Awards
 - Articles
- Additional Resources
 - Data Information Portals
 - Forums
 - Search
- Log Out

About 5290 HIFLD WG Participants

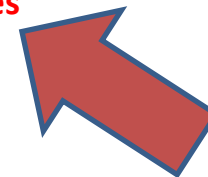
>500,000 Users Access HSIP Data



HIFLD Completed Sessions

Focused on National and Defense Critical Infrastructure Sectors:

Jul 04:	Transportation	Mar 08:	Health / Pandemic Influenza and EAs
Sep 04:	ISR and Threat	Jun 08:	Chemical / Noble Resolve 2008
Nov 04:	Public Works / Energy	Oct 08:	Interdependency Modeling and Analysis
Feb 05:	Health Affairs / Emergency Services	Jan 09:	HSIP 2008 Feedback / Cross Border Infrastructure
Apr 05:	Telecom / Global Info Grid (GIG)	Mar 09:	“Tools, Models, Viewers”
Jun 05:	Defense Industrial Base	Jul 09:	Transportation
Aug 05:	Chemical Industry & HAZMAT / Water	Sep 09:	H1N1 Geospatial Sharing
Oct 05:	Postal & Shipping / Defense Logistics	Jan 10:	Emergency Management
Feb 06:	HSIP Gold V1 Data Feedback Session	May 10:	Energy
Feb 06:	Banking & Finance / Food & Agriculture	Jul 10:	HSIP Gold 2010 Feedback
Apr 06:	National Lab Geospatial HD/HLS Projects	Nov 10:	Telecom / Global Info Grid (GIG)
Jun 06:	Emergency Operations Centers	Feb 11:	Defense Industrial Base / Critical Manufacturing
Oct 06:	Intel / Threat Monitoring and Reporting	Apr 11:	Nuclear / CBRNE Response
Jan 07:	Government and Commercial Facilities	Jul 11:	HSIP Gold 2011 Feedback / Symbology
Apr 07:	Energy and Defense Public Works	Sep 11:	Remote Sensing, Imagery and Enhanced Elevation for the Nation
Jun 07:	Man Made and Natural Hazards Modeling	Jan 12:	Cross Border Information Sharing and Supply Chain
Aug 07:	HSIP Gold V2, DHS HLS Data Model	Apr 12:	Flooding and Hurricane Response
Nov 07:	HSIP Gold Data V2 Feedback Session	Jul 12:	HSIP Gold 2012 Feedback Live Feeds
Jan 08:	Sharing and Protecting Infrastructure Information	Oct 12:	Cyber security and Energy Resilience
		Jan 13:	Wildfires



Homeland Infrastructure Foundation
Level Data (HIFLD) Working Group

Current Ongoing HIFLD Meeting

Homeland Infrastructure Foundation-Level Data (HIFLD)

Working Group **DRAFT** Agenda

January 2013– Santa Fe, NM

Wildfire Response & Formalizing Data Partnerships: API & SLAs



Wednesday, 23 Jan 2013

Thursday, 24 Jan 2013

0830-0930	Welcome and Administrative Remarks Mr. Pablo Garcia, Sandia National Labs, Resilient Information Systems Deputy Director Introductions	0800-0830	Day Two: Welcome and Administrative Remarks
0930-1000	Keynote Address Mr. Jerry Johnston, DOI, Geospatial Information Officer	0830-0900	Service Level Agreement Panel Discussion Mr. Jerry Johnston, DOI, Geospatial Information Officer TBD, DHS GMO Mr. Tony Selle, EPA, Region 8 GIS Coordinator
1000-1020	Networking Break	0900-0930	USGS Hazards Data Distribution System (HDDS) Ms. Ryan Lamb, USGS/EROS, Disaster Response Coordinator
1020-1050	Fire Management Planning Ms. Marlana Hovorka, US Forest Service, Fire Technology Transfer Specialist	0930-1000	NASA Near-Real-Time Data and Imagery Mr. Jeffrey Schmaltz, NASA, MODIS Rapid Response Team
1050-1120	NIFC Enterprise Geospatial Portal Mr. Sean Triplett, USDA-FS National Interagency Fire Center, Project Manager	1000-1020	Networking Break
1120-1150	Local Wildfire Decision Support and Data Sharing for Realtime and Pre/Post Event Operations Chief Vaughan Miller, Ventura County Fire Department, Chief (V) Mr. Brian Collins, Intterra, Operations Chief	1020-1050	NGAs "Rapid Response Ortho Program" Support to Wildfires Mr. Todd Kuhlman, NGA, User Engagement Division
1150-1250	Lunch	1050-1150	Cadastral Data Panel TBD, DOI BLM Mr. Larry Brotman, New Mexico Cadastral Coordinator TBD, FEMA
1250-1400	All Hazards Data Requirements Panel Ms. Lorri Peltz-Lewis, US Forest Service, Fire and Aviation Management (FAM), GIS Coordinator Mr. Gar Clarke, NM Department of Information Technology, NM Geospatial Program Manager Ms. Marie Martinez, DHS FEMA U.S. Fire Administration, Fire Program Specialist GIS (V)	1150-1250	Lunch
1400-1420	Networking Break	1250-1320	Fire Management Assistance Grant Mr. Allen Wineland, FEMA, FMAG Program Analyst

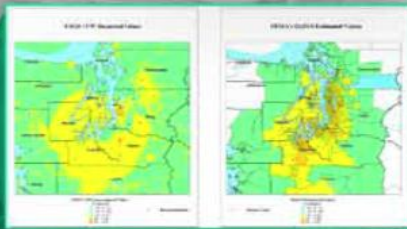
DHS GeoSpatial Management Office

Download from HIFLD Website:

<https://www.hifldwg.org/HLS-Geospatial-Concept-of-Operations-GeoCONOPS-Version-4>





Homeland Security Geospatial Concept of Operations (GeoCONOPS)



Go To <https://www.hifldwg.org> and join



Contact Us

- HIFLD Support Team
- Amanda Ross  (757) 892-6550
- Justin Sherin  (757) 478-1393

User login

E-mail: *

Password: *

[Log in](#)

- [Request new account](#)

The Homeland Infrastructure Foundation-Level Data (HIFLD) Working Group

The Homeland Infrastructure Foundation-Level Data (HIFLD) Working Group was established in February 2002 to address desired improvements in collection, processing, sharing, and protection of homeland infrastructure geospatial information across multiple levels of government and to develop a common foundation of homeland infrastructure data to be used for visualization and analysis on all classification domains. Maintaining this original purpose, the HIFLD Working Group has attracted a voluntary coalition of Federal, state, and local government organizations and supporting private industry partners who are involved with geospatial issues related to Homeland Defense (HD), Homeland Security (HLS), Emergency Preparedness and Response (EP&R), or Civil Support (CS). Within these broad mission areas, the HIFLD members and non-federal contributors are involved in a wide range of different functions including: Critical Infrastructure Protection (CIP), Crisis and Consequence Management, Intelligence and Threat Analysis, Antiterrorism/Force Protection (AT/FP), Defense Support to Civil Authorities (DSCA), Man-Made and Natural Hazard Modeling, and Government Facilities Management



Homeland Security Info Network (HSIN): GIS Portal

Document Management - Geospatial Information System - Windows Internet Explorer

https://government.hsin.gov/sites/gis/DocMgmt.aspx

Document Management - Geospatial ...

HSIN Geospatial Information System

Home | Collaboration | **Information Sharing & GIS Products** | Situational Awareness/COP | HSIP Freedom | GeoCONOPS

HSIN Geospatial Information System

Geospatial Data Links and Feeds

- US Census Bureau Cartographic Boundary Files
- FEMA Disaster Declaration Maps
- USGS Earthquake Hazards Data
- USGS Seamless Data Warehouse
- National Atmosphere Release Advisory Center (NARAC)
- USGS EROS Hazard Data Distribution System (HDDS)
- USDA Geospatial Data Gateway
- Center for Satellite Based Crisis Information
- National Weather Service GIS Data Portal
- FEMA Enterprise GIS Services
- The Geospatial Multi-Agency Coordination Group (GeoMAC)
- MODIS Rapid Response System
- USGS WaterWatch Home Page
- NOAA nowCOAST
- Geoint Online

Add new link

Links

- HIFLD WG
- ICAV: Next Generation
- HSIP Freedom download instructions
- USGS HDDS
- USGS National Map
- HAZUS
- DHS Earth
- http://cs.hsin.gov
- CS
- Virtual USA portal
- DHS GII OneView
- DHS Geospatial Information Infrastructure (GII)
- http://hsin.oregon
- https://government.hsin.gov/sites/gis/Community%20Documents/FOUO_2012_NATO_Summit_Chicago_Geospatial_Productshttp://

2012

al

ok_Final_opt

42512FinalProdu

_PaloVerdeMapB

_HamptonRoads

NOCAwareness0949-12-UpdateReport15-Whitwater-BaldyComplexFire-WillowCreek,N...

File Edit View Window Help

1 / 1 64.6%

Tools Sign Comment

UNCLASSIFIED//FOR OFFICIAL USE ONLY

Click on Sign to add text and place signature on a PDF File.

NOCAwareness 0949-12 Update Report 15: Whitwater-Baldy

U.S. Department of Homeland Security

Source: ESRI, INCREMENT, GeoMAC, NWS, USFS
Location: Willow Creek, NM
166 Miles

Incident Command Post Reserve, NM

Willow Creek, NM

Middle Fork River

Whitwater-Baldy Complex Fire - Willow Creek, NM
267,467 Acres, 30% Containment

Legend

- Fire Perimeter
- Evacuation Areas

Forecast for 8 June 2012
Winds: 5-15 mph

Union Pacific Railroad Lordsburg Yard & Union Pacific Lordsburg Bridge - 56 Miles

National Fire Preparedness Level: 2/Southwest Fire Preparedness Level: 3

Overview: The Whitwater-Baldy Complex Fire in Catron County, NM has consumed 267,467 (+3,878) acres and remains at 30 (no change) percent contained. The National Weather Service forecast for today is clear with a high near 81 degrees and winds from the east at 5 to 15 mph.

Firefighters continue to make progress along the fire boundary with most activities occurring in the outermost east and west portions of the fire. Firefighters conducted successful burn out operations on the most eastern edge of the fire. Immediately following the burn, holding and mop-up operations proceeded without issue. Along the western and southwestern boundary, the fire was more active and visible as the fire backed into heavily vegetated canyons. Firefighters and aerial ignitions were on hand to respond and control the fire. Firefighters will continue to monitor and patrol for hot spots until the fire line is cold. In areas where the fire was more active, fire crew tactics were adjusted to control fire flare-ups with assistance from air resources.

The National Infrastructure Coordinating Center reports the closest critical infrastructure is the Union Pacific Railroad Lordsburg Yard & Union Pacific Lordsburg Bridge, approximately 56 miles south of the perimeter of the fire. There is no threat from the fire to these facilities.

As part of the Burned Area Emergency Response (BAER) effort, archaeologists, hydrologists, and soil scientists will be in the burn area continuing their assessment on soils, cultural sites, drainages and watersheds, while wildlife biologists are assessing the effects of the fire on fish and wildlife habitat. BAER assessments have been challenging due to the size and complexity of the fire, but progress is being made.

FEMA Region VI Regional Watch Center remains in contact with state and emergency management officials. The New Mexico State Emergency Operations Center is partially activated at Level III (Increased Readiness).

The DHS National Operations Center will continue to monitor the Whitwater-Baldy Complex Fire and report as warranted.

Prepared by the DHS National Operations Center.
UNCLASSIFIED//FOR OFFICIAL USE ONLY

Internet | Protected Mode: On

125%

100%

4:09 PM
6/8/2012

Homeland Security Information Network (HSIN): Emergency Management Portal

HSIN
Membership Advanced Search
Today is Thursday

[Home](#) | [Situational Awareness/Current FEMA Response Ops/Special Events](#) | [Event 1](#) | [Event 2](#) | [Event 3](#) | [Event 4](#) | [Library/Archives/Training & Exercises](#)

Emergency Management

Phase 1, Phase 2 or Phase 3 Tracked Events

There are currently no active announcements. To add a new announcement, click "Add new announcement" below.

[Add new announcement](#)

Awareness Tracked Events

Subject	Replies	Posted By	Modified
There are no items to show in this view of the "Steady-State Tracked Events" discussion board. To create a new item, click "New Discussion" above.			

[Add new discussion](#)

Daily DHS Operational Reports

Type	Name	Modified By
	20120719 FEMA Daily Ops Briefing_830 NEW	Glenn Proska
	DHS_Daily_Report_2012-07-19 NEW	Robert Clark2
	2012July19FEMA_Nati_sitrep NEW	Johnny Patterson1

[Add new document](#)

Daily Interagency Operational Reports

Type	Name	Modified By
	19 Jul 12 NOAA Met Update Graphic NEW	David Graham3
	19 Jul 12 NOAA Met Update Brief NEW	Robert Clark2
	NORAD USNORTHCOM OPERATIONAL SUMMARY 19 Jul 12 0500 MDT NEW	NORTHCOM Timothy Keck

[Add new document](#)

Interagency Reporting

Emergency Management Community Announcements

[New Item](#) | [Filter](#)

Title	Modified
FEMA-4058-DR-IN; FRN 1 PA Add-ons	3/22/
FEMA-4061-DR	3/22/
#03-2012 -Severe Weather Amend 2 Demob	3/4/2
#03-2012 -Severe Weather Level II	3/2/2

COI Member Directory

[COI Member Directory](#)

[Add new link](#)

National Terrorism Advisory System

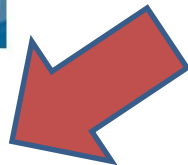
NTAS

NO ACTIVE ALERTS

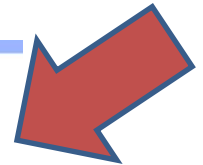
www.DHS.gov/alerts

DHS-OSE

Daily/Weekly Reports



HSIN Connect - Web-based Meeting Application



Jabber - Instant Messaging Application



Request an Application to join HSIN by emailing HSIN.Outreach@hq.dhs.gov

- Joining HSIN http://www.dhs.gov/files/programs/gc_1156888108137.shtm
- Membership in HSIN is COI-based. To become a member, first decide which COI(s) meet your needs. If you need additional information, please contact the Mission Advocate listed as the POC for a particular COI(s), or e-mail the HSIN program at HSIN.Outreach@HQ.DHS.gov. (Suggested COIs: GIS, Emergency Management)
- Once you have identified the COI of interest to you, you will need to be nominated and vetted into the COIs. This process will require that you provide the following information on the HSIN membership application:
 - Name
 - A valid e-mail address
 - Department/Organization
 - Supervisor
 - Valid Contact Information
- Obtain an application by sending a request to **HSIN.Outreach@hq.dhs.gov**. Once nominated, the COI Validating Authority will review your membership application and approve or deny your admission to the COI. If the application is approved, an email will be sent to you with instructions on how to log onto HSIN for the first time.

My Promise

- I will work with you to get the best HSIP data possible (Gold, Navteq, Freedom)
- I will work with you to become a HIFLD member and access the HIFLD website
- I will work with you to join HSIN, download HSIP Freedom, access OneView and access HSIN Connect

Need help getting resources?

Don't worry if you missed something!



Just Make The Connection!

Alan Leidner

leidner_alan@bah.com

212-551-6416